



Office of AIDS Programs and Policy
Map Reference Book



Mike Janson, MPH
Research Manager

Ricardo Contreras, MPH
Researcher

Michael Green, PhD, MHSA
Chief

Planning & Research Division

Table of Contents

Background

Page iv

Maps

1. AIDS Case Rates (2007)	AIDS case rates diagnosed in 2007 by Health District
2. AIDS Cases (2007)	AIDS cases diagnosed in 2007 by Health District
3. AIDS Cases, Cumulative (2007)	Cumulative AIDS cases by Health District as of 2007
4. Care Medical Providers (2005)	Care Medical Providers (geocoded)
5. Health Education and Risk Reduction (HE/RR) (2006)	All HE/RR provider sites (geocoded)
6. Health Stations (2005)	All health station sites (geocoded)
7. HIV Positive Test Incidence by Service Planning Area (SPA) (FY2006)	HIV positive test incidence (number of positive tests compared to estimated total population) by SPA
8. HIV Positive Tests, New by Zip Code (FY2006)	Self-identified first-time HIV positive tests by Zip Code
9. HIV Prevention Plan (2009-13) High-risk Zip Codes	HIV risk profile (multiple risk factors) by Zip Code
10. HIV Service Providers (2005)	HIV service provider sites (HCT, HE/RR, Faith-based, Medical, and EIP) (geocoded)
11. HIV Testing Sites (2005)	All HIV testing sites including fixed and mobile sites (geocoded)
12. Hospitals and Comprehensive Care Facilities (2008)	All hospitals and comprehensive care facilities (public & private) (geocoded)



13. LACHNA Behavioral Risk Groups (2007)

Participants by BRG by SPA of residence



14. Service Provider Network Medical Services (2005)

All medical provider sites (geocoded)



15. Service Provider Network Prevention Services (2005)

All prevention service provider sites (geocoded)



16. Service Provider Network Social Services (2005)

All social service provider sites (geocoded)



Other Available Maps

1. Census Tracts (2000)

Census Tract boundaries



2. Cities (2006)

City boundaries



3. Health Districts (2002)

Health District boundaries



4. Service Planning Areas (2002)

Service Planning Area (SPA) boundaries



5. Supervisorial Districts (2001)

Supervisorial District boundaries



6. Zip Codes (2006)

Zip Code boundaries



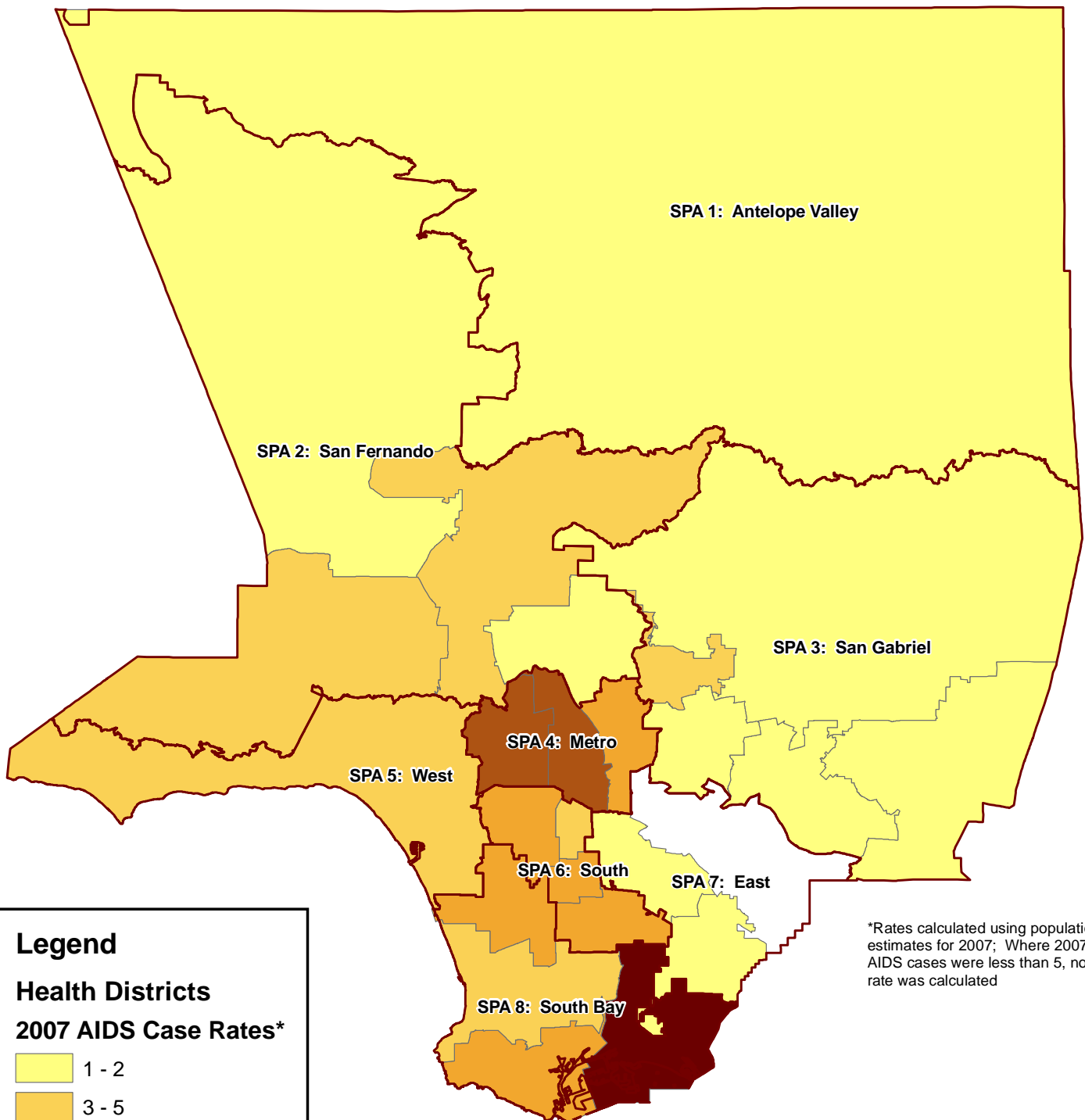
Background

Geographic Information Systems (GIS) are an important tool in the planning for public health services. Office of AIDS Programs and Policy (OAPP) staff have been developing maps using GIS technology since 2004. These maps have been used in conjunction with other data sources to evaluate HIV prevention and treatment services in Los Angeles County. In addition, OAPP has been working collaboratively with the Public Health GIS Users Group (GISUG) to share information and best practices. As a result, OAPP has developed a number of maps showing various HIV risk factors by geographical area as well as the location of HIV service delivery sites. The maps, developed by Planning & Research Division, have been included in this book. The book will be updated regularly as new maps are available.

Each map document represents an available map layer and can be overlaid with other layers upon request using the OAPP Planning & Research data request form. For example, HIV prevention service delivery sites can be overlaid with HIV positive tests by zip code. Maps drawn to show the entire boundary of Los Angeles County may not have labels for small features such as service delivery sites or geographical areas including zip code and census tract number when printed on letter size paper. However, the resolution of these features will display on larger sized documents such as presentation posters. Further, smaller geographic areas can show more detailed features including site labels. These data are available upon request. All map documents include a legend and data source and are drawn at 1:600,000 scale.

General questions regarding OAPP GIS and mapping activities should be directed to Mike Janson, Planning & Research at mjanson@ph.lacounty.gov. Specific data requests can be obtained by completing the OAPP Planning & Research data request form available on the intranet.

AIDS Case Rates (2007) Los Angeles County



Legend

Health Districts

2007 AIDS Case Rates*

- 1 - 2
- 3 - 5
- 6 - 9
- 10 - 21
- 22 - 30
- Service Planning Area

*Rates calculated using population estimates for 2007; Where 2007 AIDS cases were less than 5, no rate was calculated

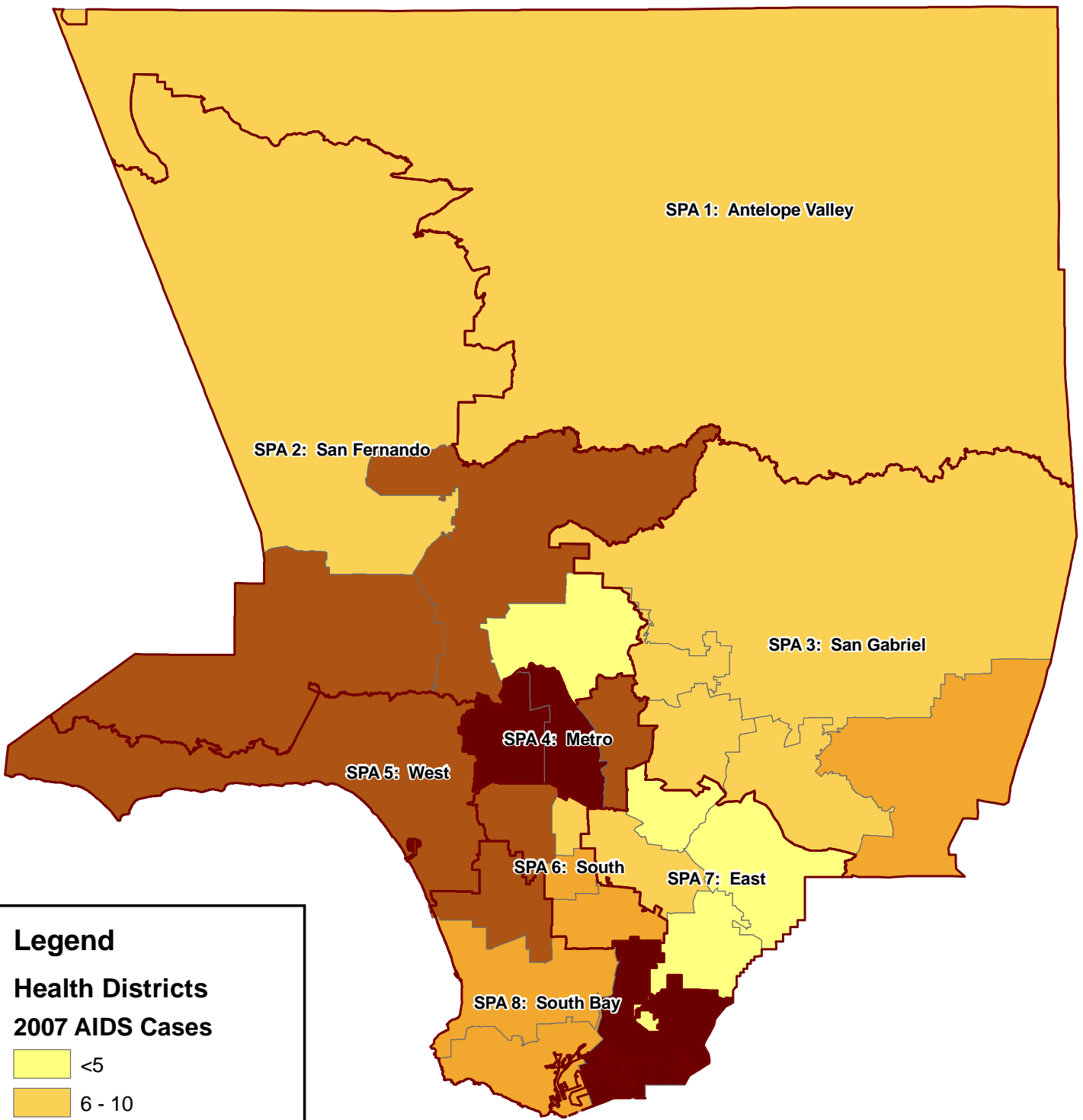


**Office of AIDS Programs and Policy
Planning and Research Division**



Source: HIV Semi-annual Surveillance Summary, January 2008, HIV Epidemiology Program

AIDS Cases Diagnosed in 2007 Los Angeles County



Legend

Health Districts 2007 AIDS Cases

- <5
- 6 - 10
- 11 - 19
- 20 - 33
- 34 - 148
- Service Planning Area

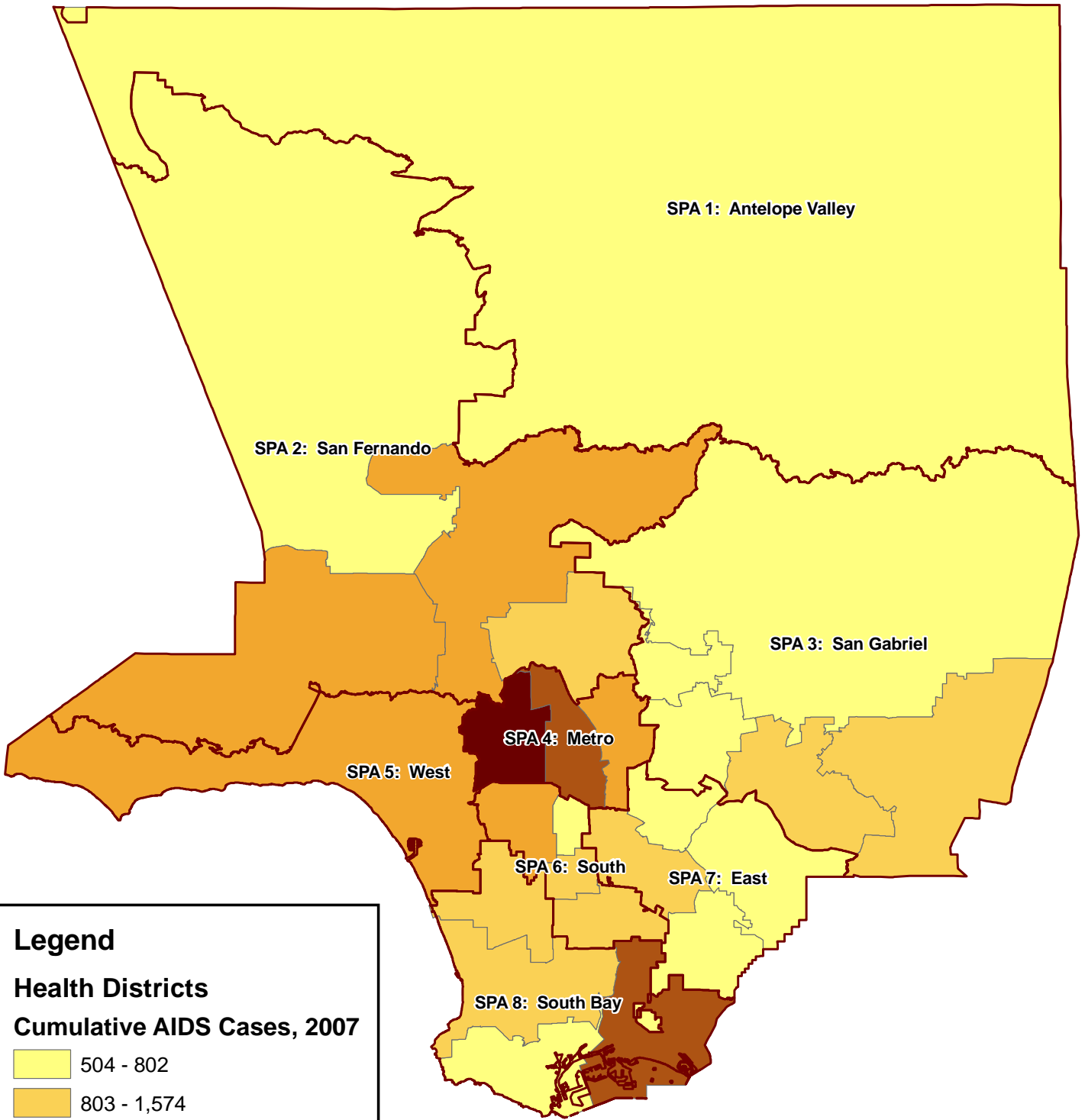


**Office of AIDS Programs and Policy
Planning and Research Division**



Source: HIV Semi-annual Surveillance Summary, January 2008, HIV Epidemiology Program

AIDS Cases, Cumulative (2007) Los Angeles County



Legend

Health Districts

Cumulative AIDS Cases, 2007

- 504 - 802
- 803 - 1,574
- 1,575 - 2,989
- 2,990 - 6,037
- 6,038 - 11,926

Service Planning Area

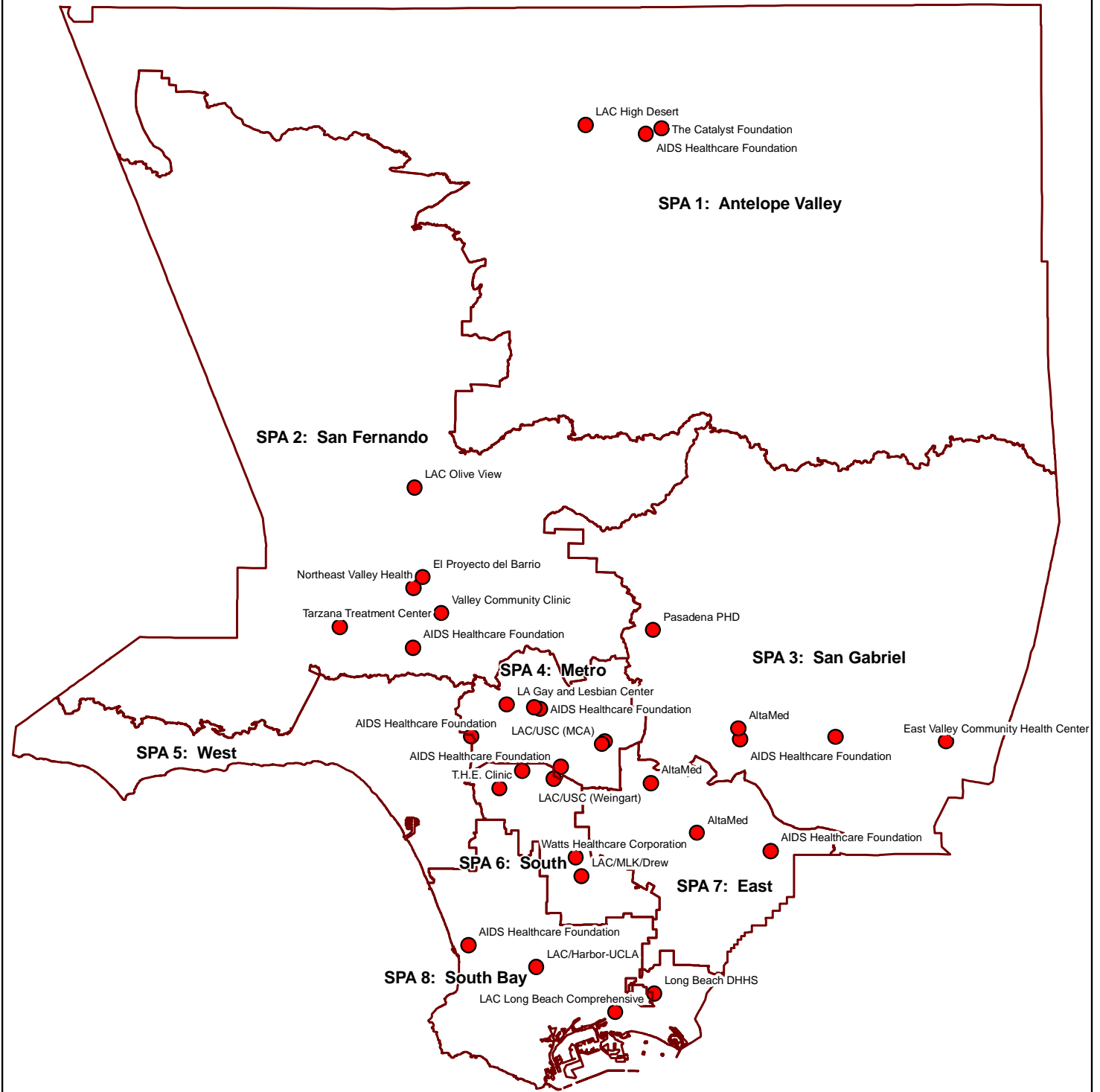


**Office of AIDS Programs and Policy
Planning and Research Division**



Source: HIV Semi-annual Surveillance Summary, January 2008, HIV Epidemiology Program

Ryan White Care Act Medical Provider Sites (2005) Los Angeles County



Legend

- Medical Providers
- Service Planning Area

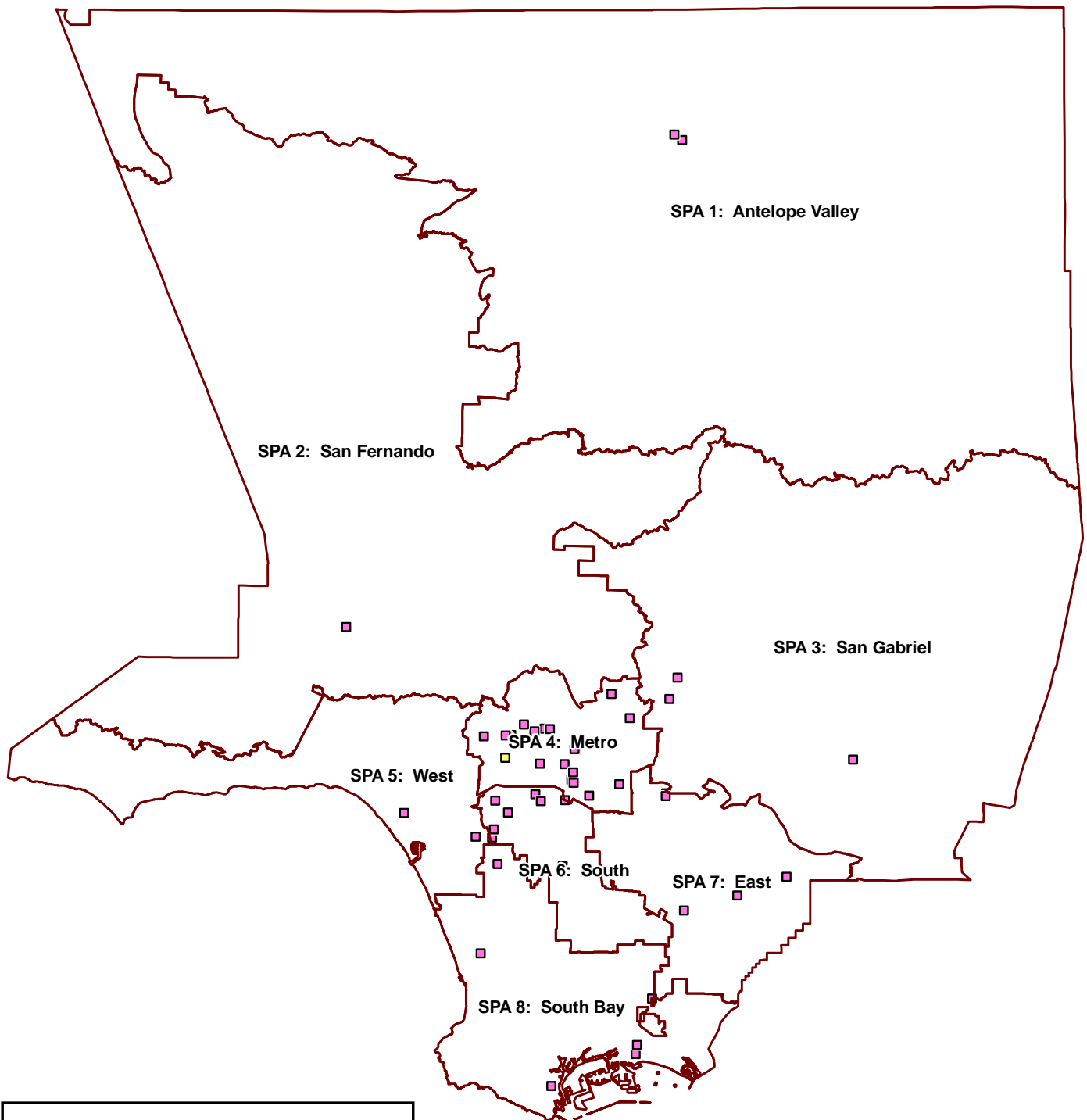


Office of AIDS Programs and Policy
Planning and Research Division



Source: Casewatch, 2005

Health Education/Risk Reduction Sites (2006) Los Angeles County



Legend

- Health Education/Risk Reduction
- Faith-based
- Service Planning Area

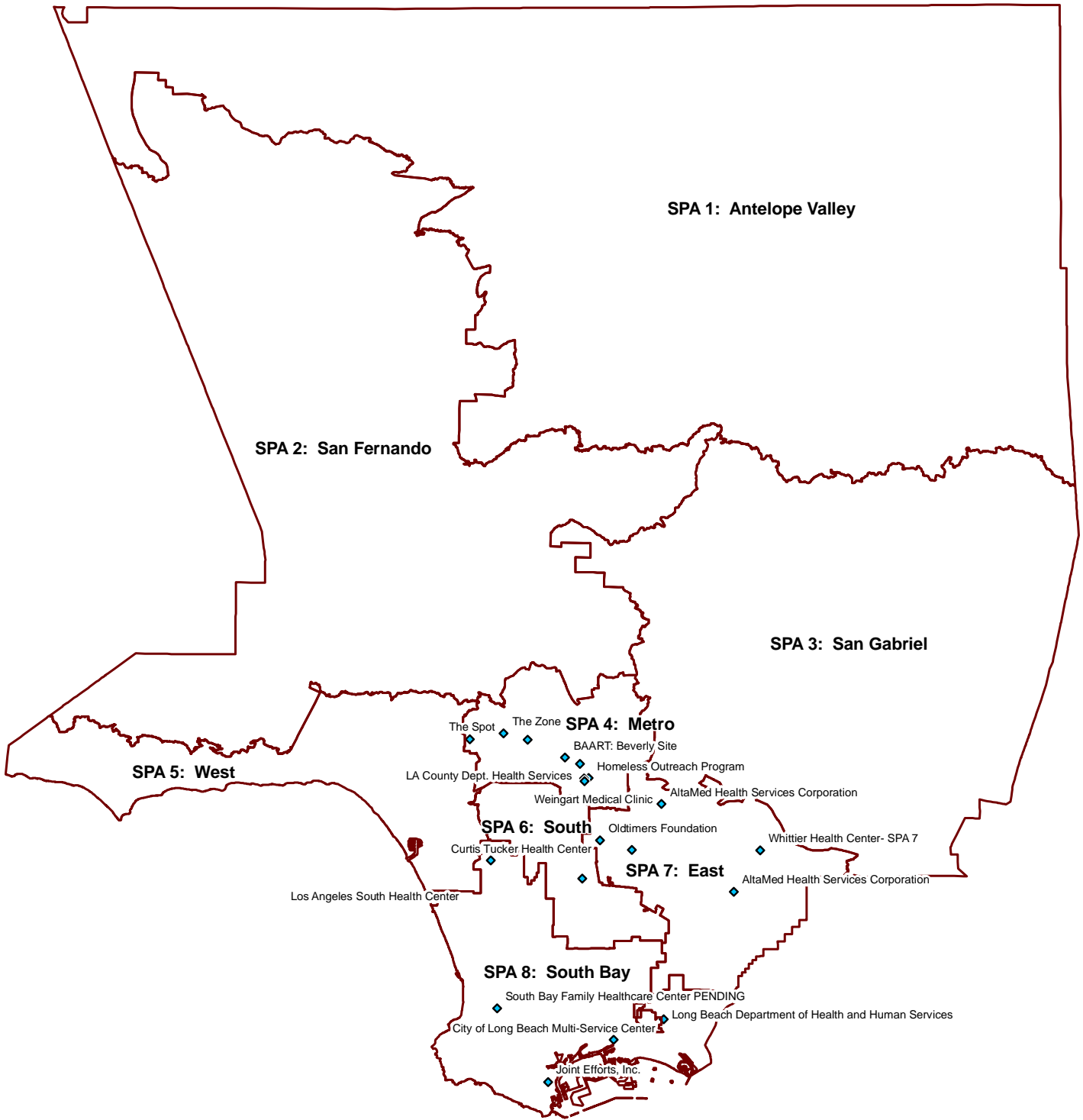


Office of AIDS Programs and Policy
Planning and Research Division



Source: Office of AIDS Programs and Policy, Prevention Services Division

Health Station Sites (2006) Los Angeles County



Legend

- ◆ Health Stations
- ▭ Service Planning Area

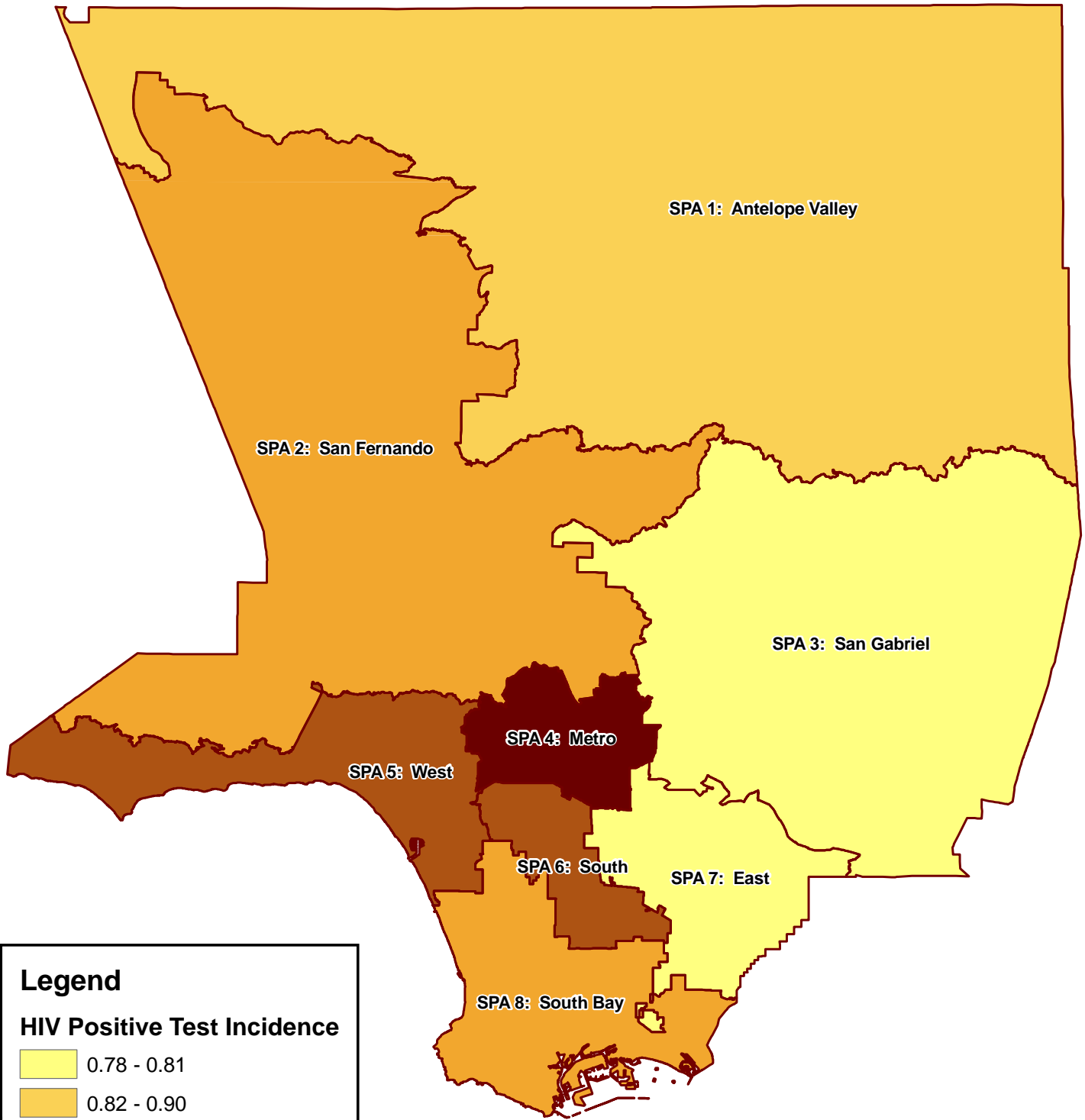


Office of AIDS Programs and Policy
Planning and Research Division



Source: Office of AIDS Programs and Policy, Provider Support Services Division

New HIV Positive Test Incidence by Service Planning Area (FY2006-07) Los Angeles County



Legend

HIV Positive Test Incidence

- 0.78 - 0.81
- 0.82 - 0.90
- 0.90 - 1.08
- 1.18 - 1.53
- 1.54 - 2.27
- Service Planning Area

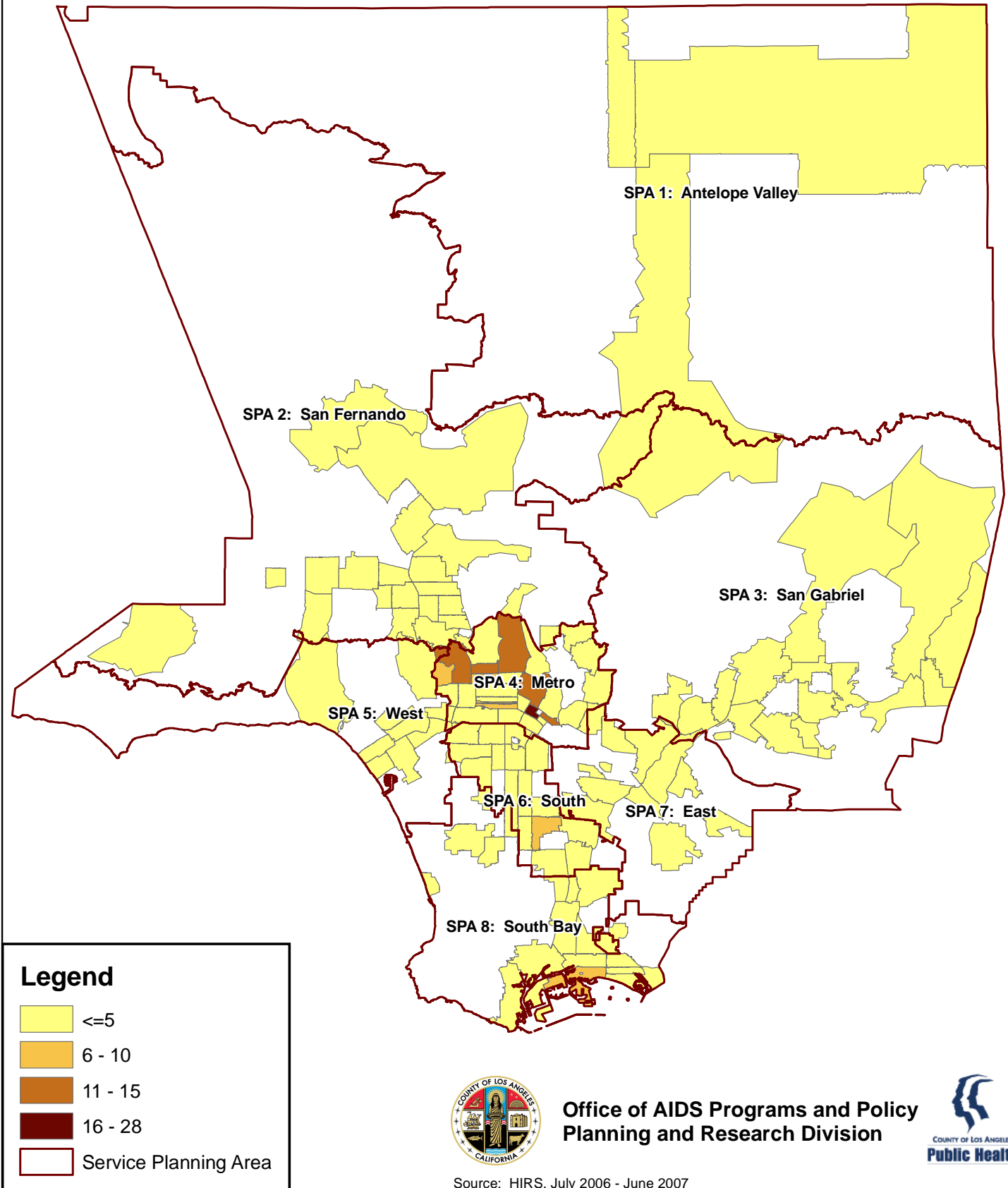


Office of AIDS Programs and Policy
Planning and Research Division

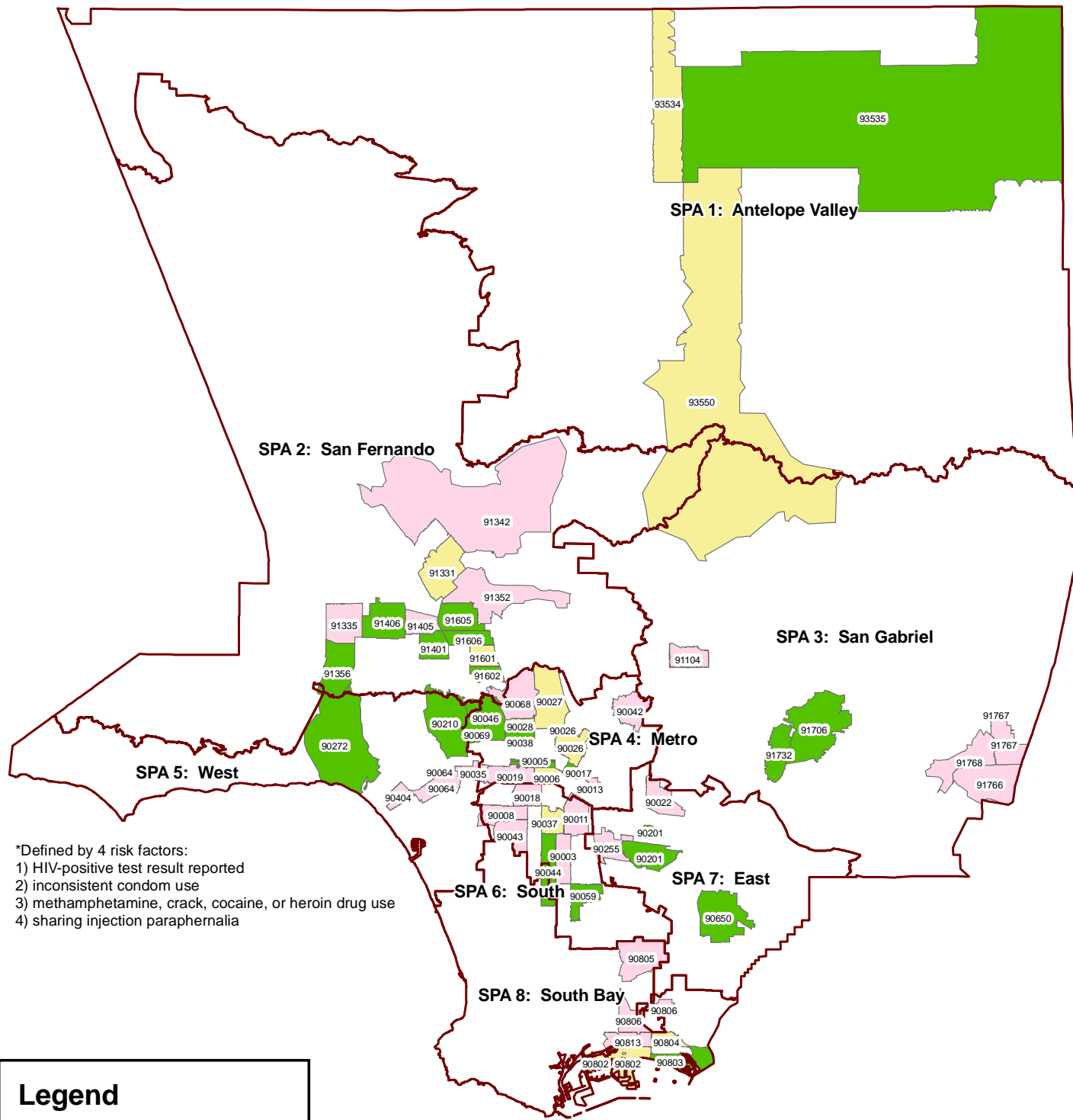


Source: HIRS, July 2006 - June 2007

New Positive HIV Tests by Zip Code (FY2006-07) Los Angeles County



2007 High-risk Zip Codes* Los Angeles County



*Defined by 4 risk factors:
 1) HIV-positive test result reported
 2) inconsistent condom use
 3) methamphetamine, crack, cocaine, or heroin drug use
 4) sharing injection paraphernalia

Legend

- LACHNA
- HCT
- Both Data Sources
- Service Planning Area

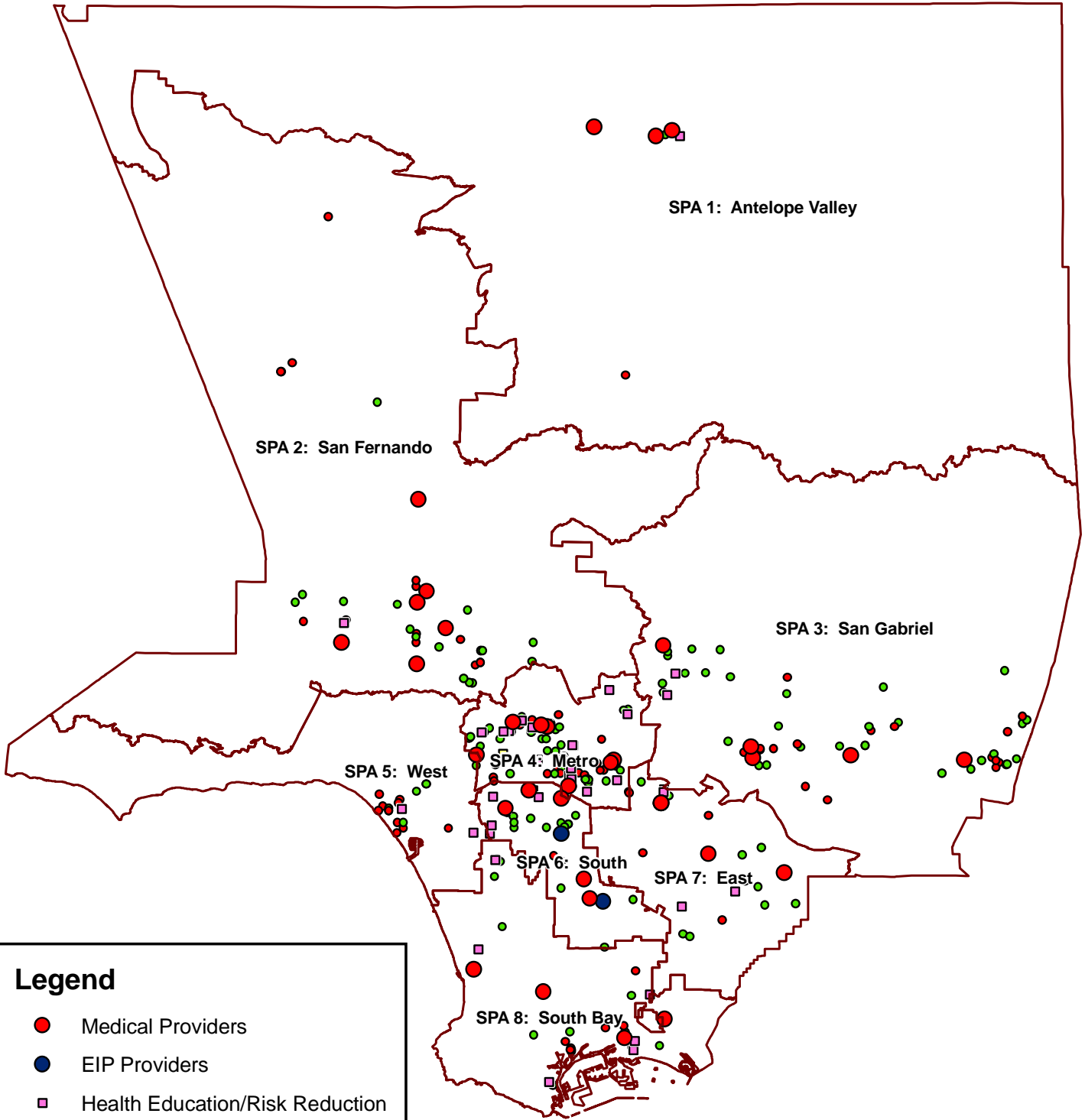


**Office of AIDS Programs and Policy
 Planning and Research Division**



Source: Los Angeles Coordinated HIV Needs Assessment (LACHNA), 2007;
 HIV Information Resource System (HIRS), July 2006 - June 2007

HIV Service Delivery Sites (2005) Los Angeles County



Legend

- Medical Providers
- EIP Providers
- Health Education/Risk Reduction
- Faith-based
- HCT Fixed
- HCT Mobile
- Service Planning Area

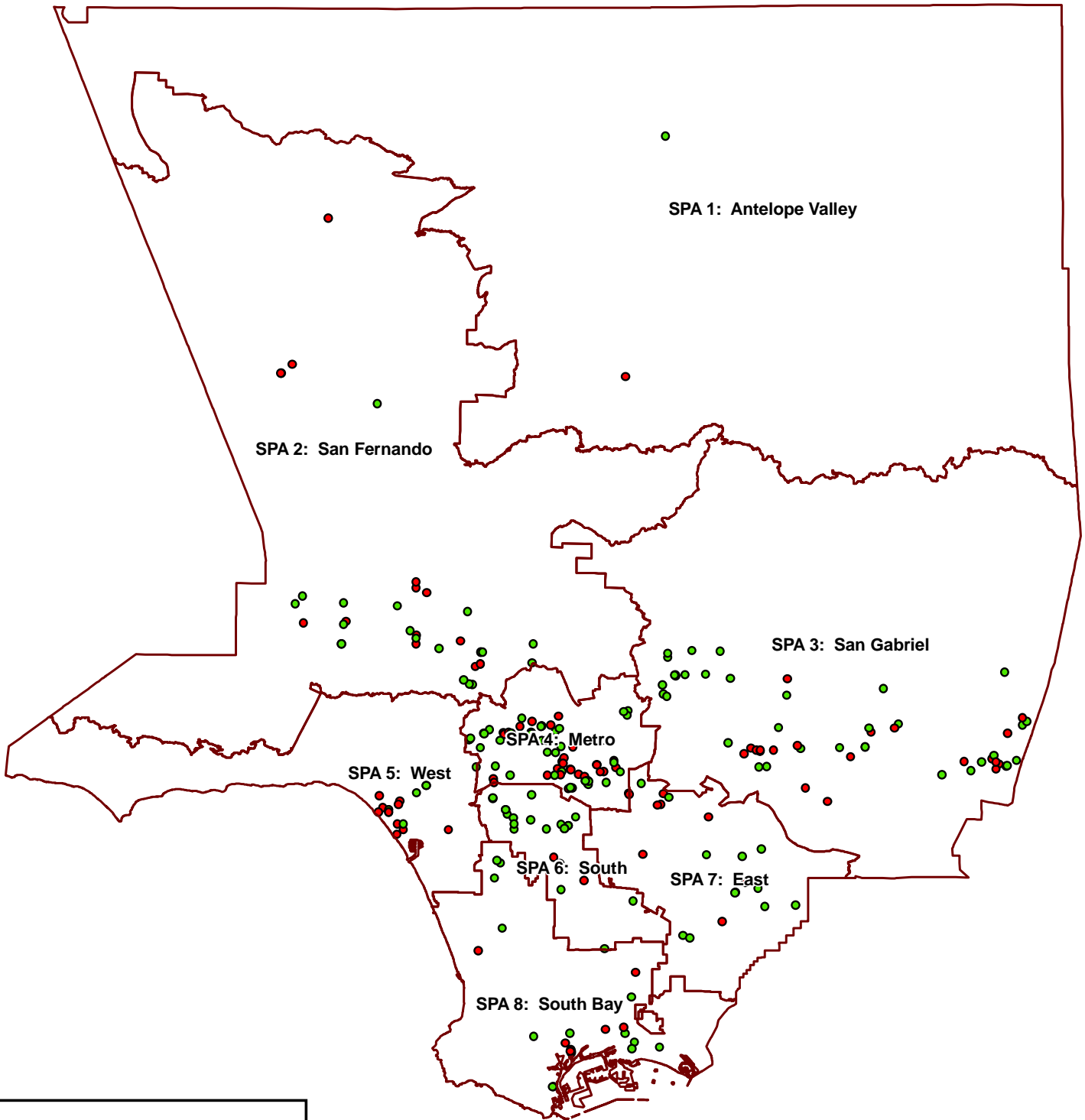


Office of AIDS Programs and Policy
Planning and Research Division



Source: Prevention Services Division, Clinical Enhancement Services Division

HIV Counseling and Testing Sites (2006) Los Angeles County



Legend

- HCT Fixed
- HCT Mobile
- ▭ Service Planning Area

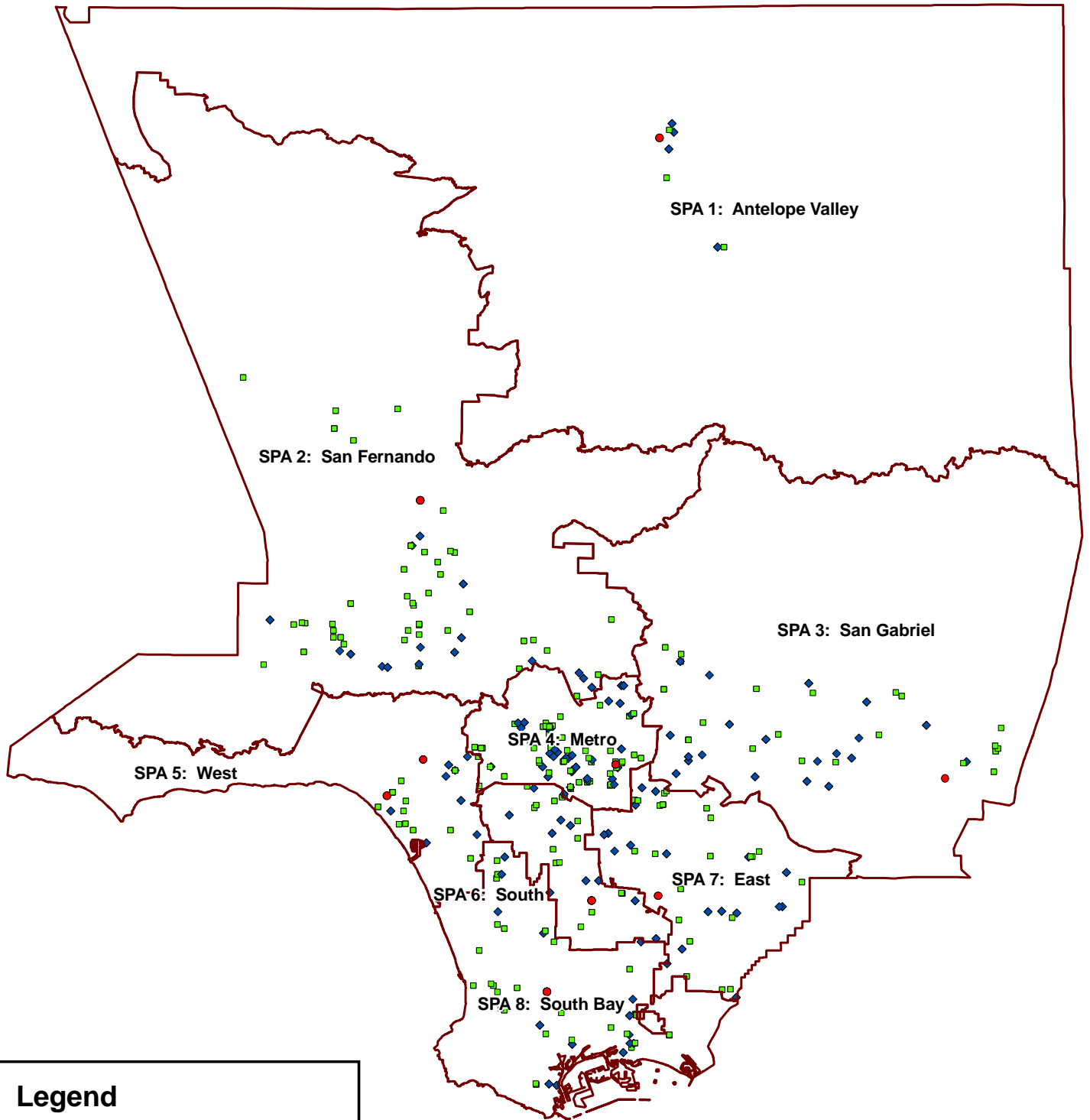


Office of AIDS Programs and Policy
Planning and Research Division



Source: Prevention Services Division

Hospitals and Comprehensive Care Centers Los Angeles County

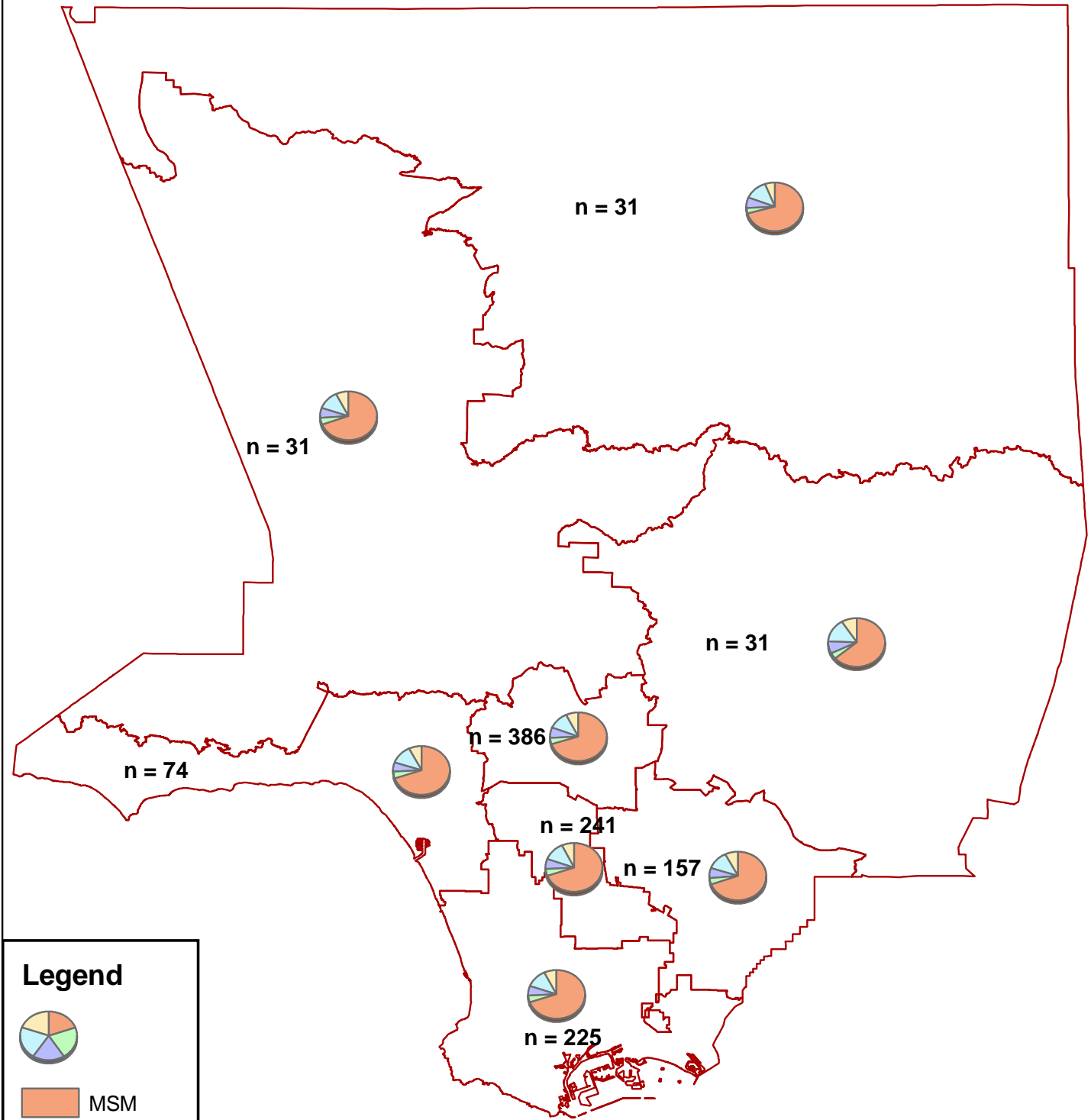


Legend


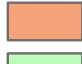
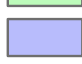
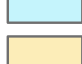
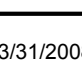
- Private
- Public
- ◆ Public/Private - Not Defined
- ▭ Service Planning Area

Source: California Office of Statewide Health Planning & Development (OSHPD)

Los Angeles Coordinated HIV Needs Assessment (LACHNA) Behavioral Risk Groups (BRG) by Service Planning Area (SPA)



Legend

-  MSM
-  MSM/IDU
-  IDU
-  WSR
-  TG

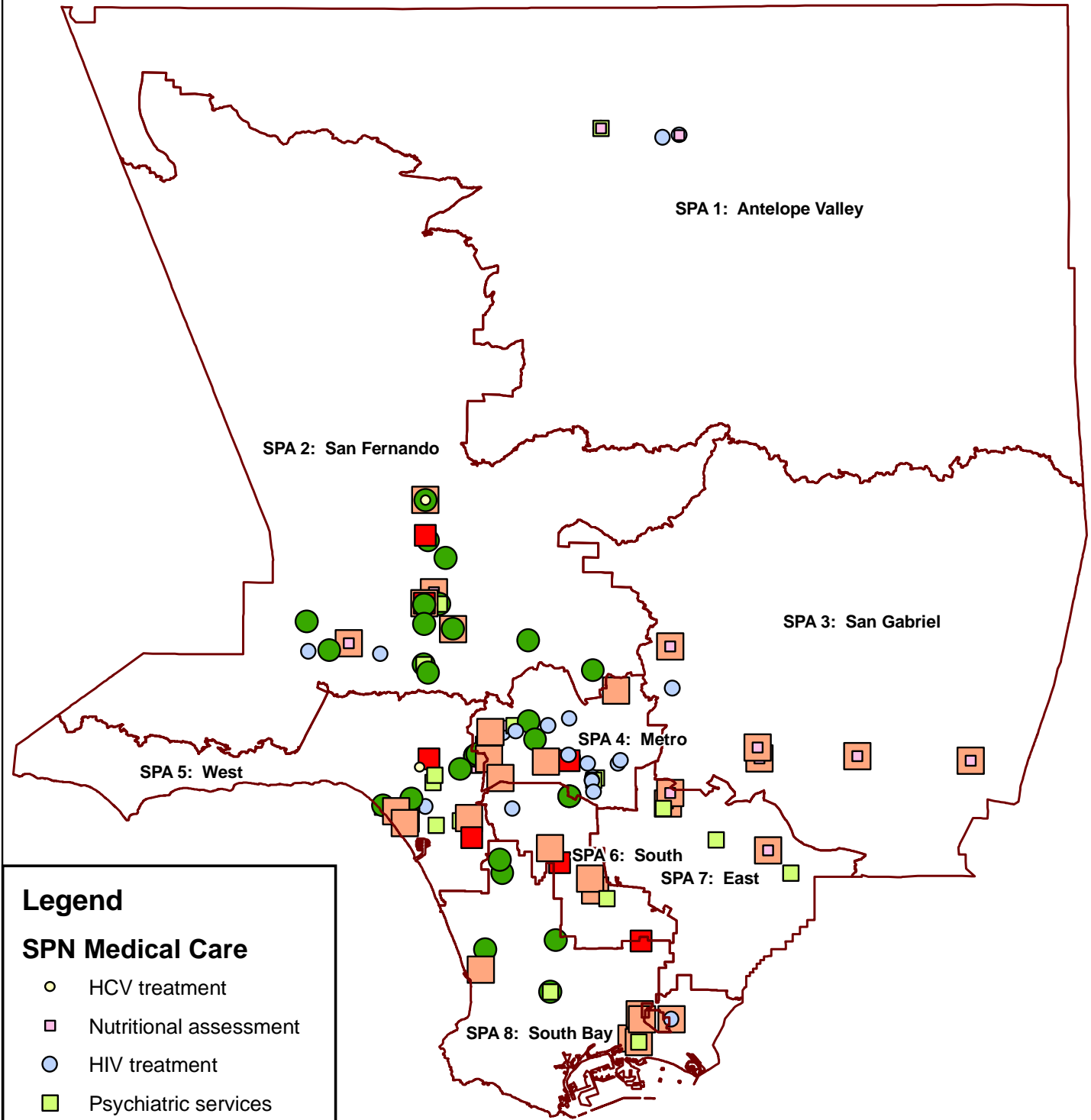


**Office of AIDS Programs and Policy
Planning and Research Division**



Source: Los Angeles Coordinated HIV Needs Assessment, 2007

Service Provider Network, HIV Medical Services Los Angeles County



Legend

SPN Medical Care

- HCV treatment
- Nutritional assessment
- HIV treatment
- Psychiatric services
- STD treatment
- Dental services
- Treatment ed/adherence
- Service Planning Area

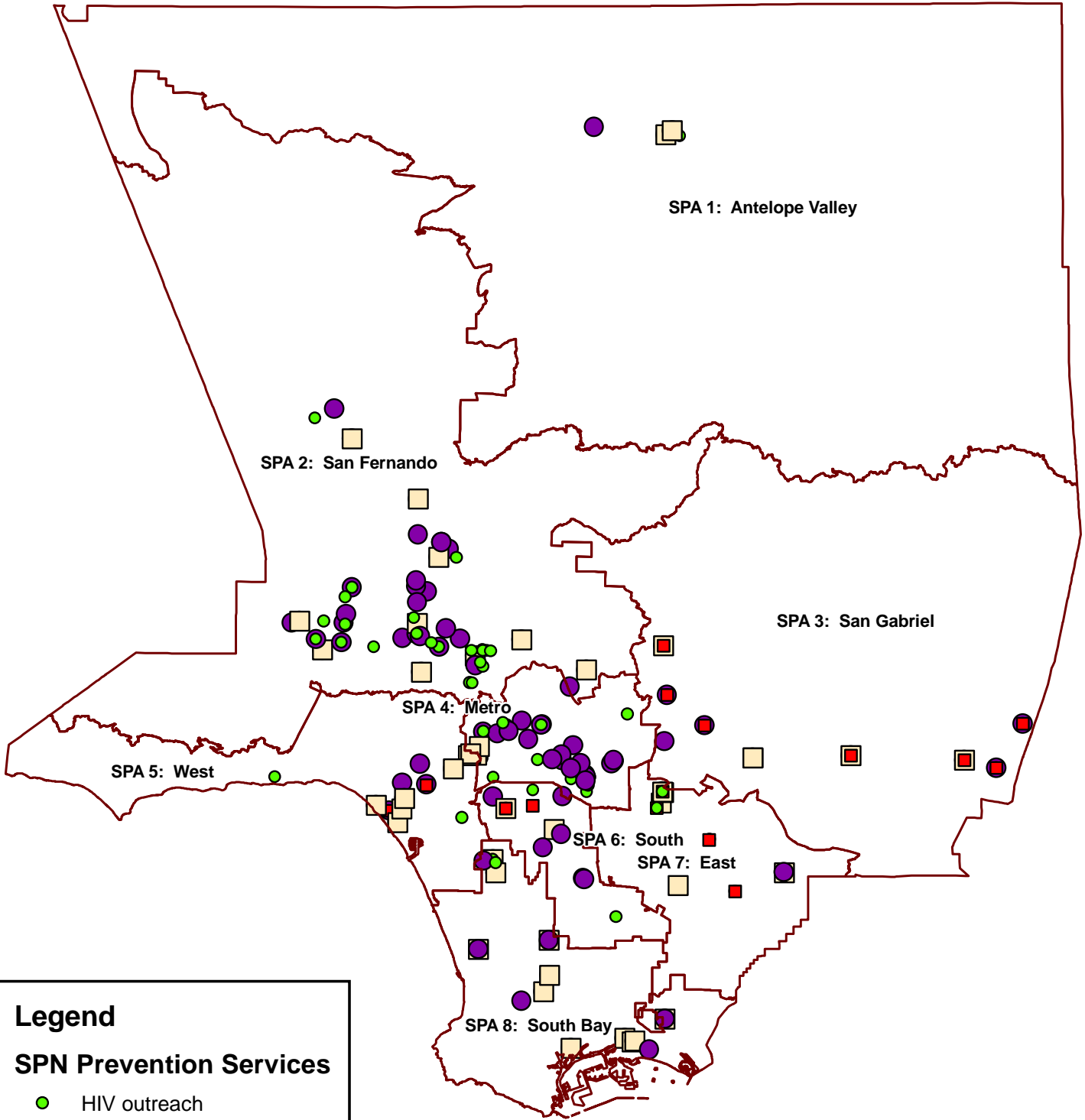


Office of AIDS Programs and Policy
Planning and Research Division



Source: Service Provider Networks, 2005; Provider Support Services Division, 2005

Service Provider Network, HIV Prevention Services Los Angeles County



Legend

SPN Prevention Services

- HIV outreach
- STD outreach
- HIV testing
- STD testing
- Service Planning Area

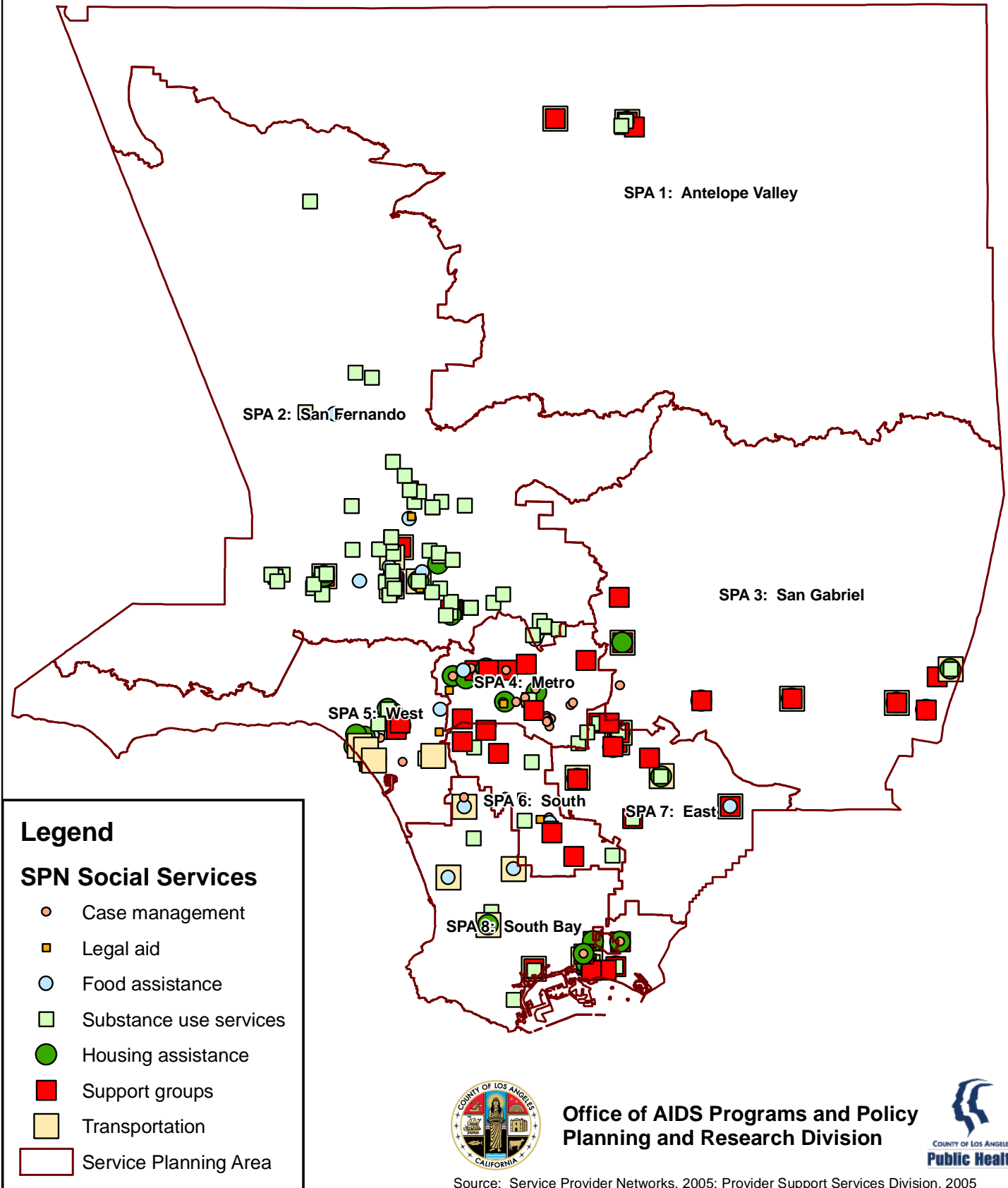


Office of AIDS Programs and Policy
Planning and Research Division



Source: Service Provider Networks, 2005; Provider Support Services Division, 2005

Service Provider Network, HIV Social Services Los Angeles County

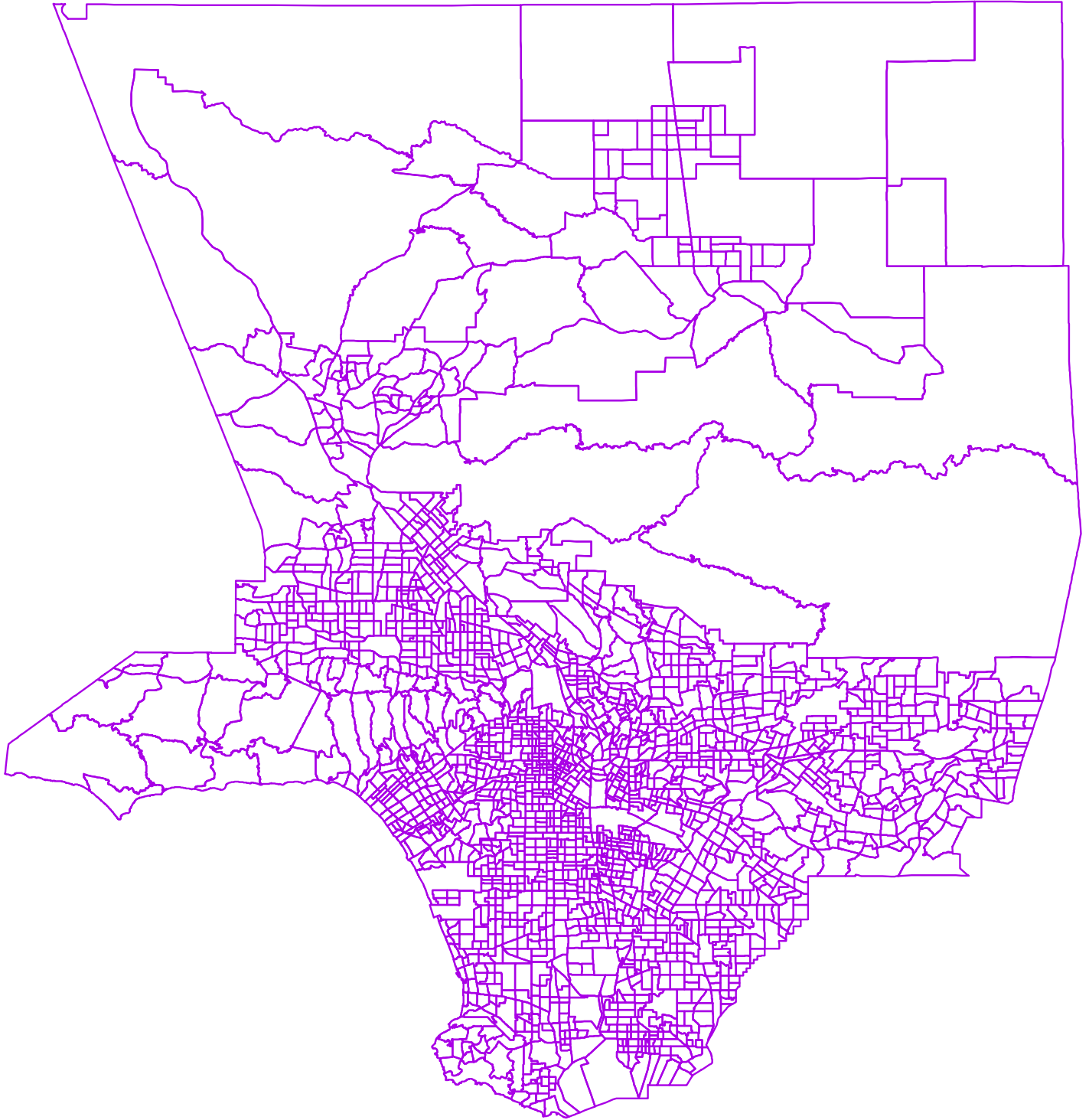


Office of AIDS Programs and Policy
Planning and Research Division




Source: Service Provider Networks, 2005; Provider Support Services Division, 2005

Census Tracts (2000) Los Angeles County



Legend

 Census Tracts (2000)

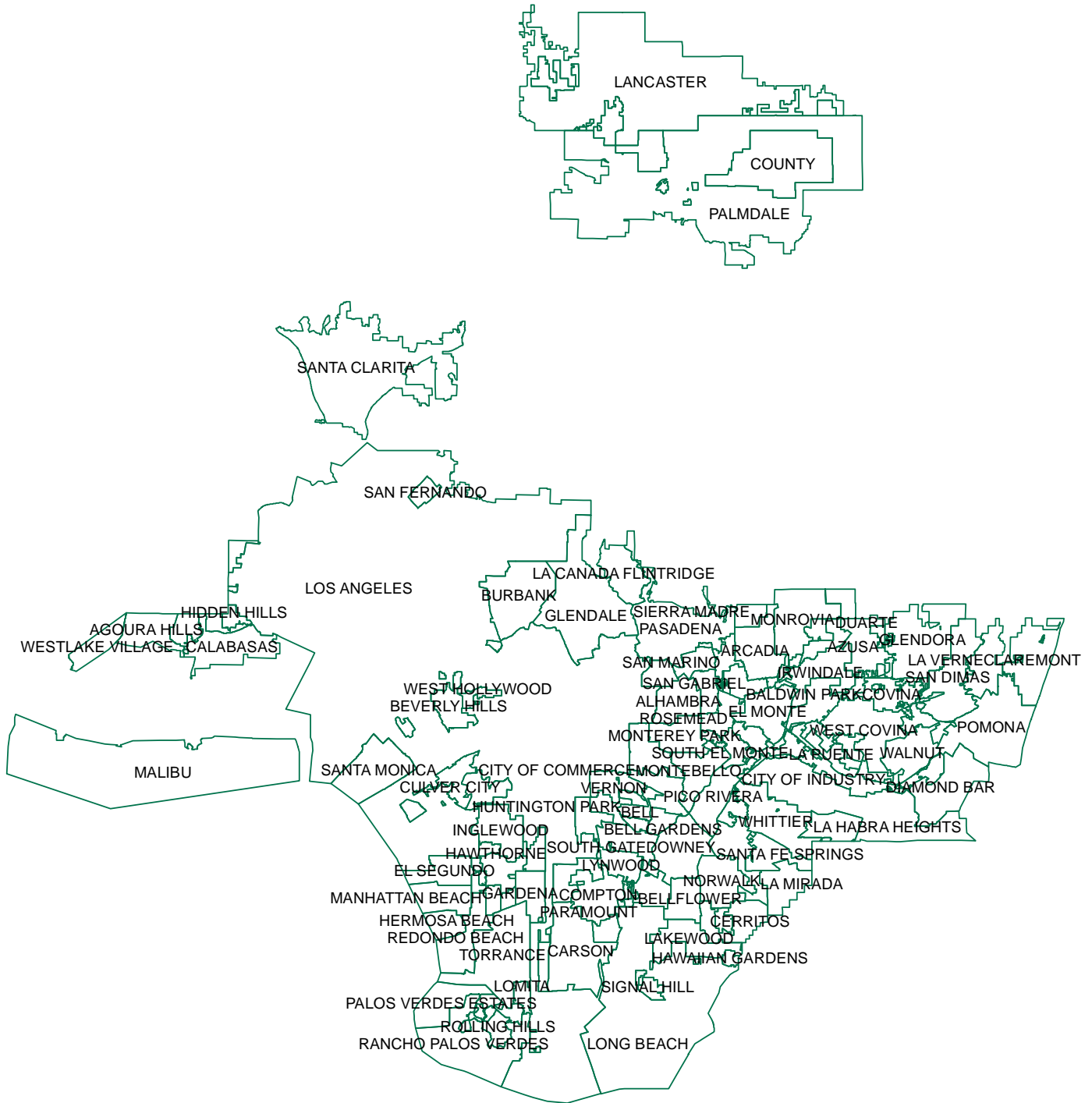


Office of AIDS Programs and Policy
Planning and Research Division




Source: U.S. Department of Commerce (2000)

City Boundaries (2006) Los Angeles County



Legend

 CTYA

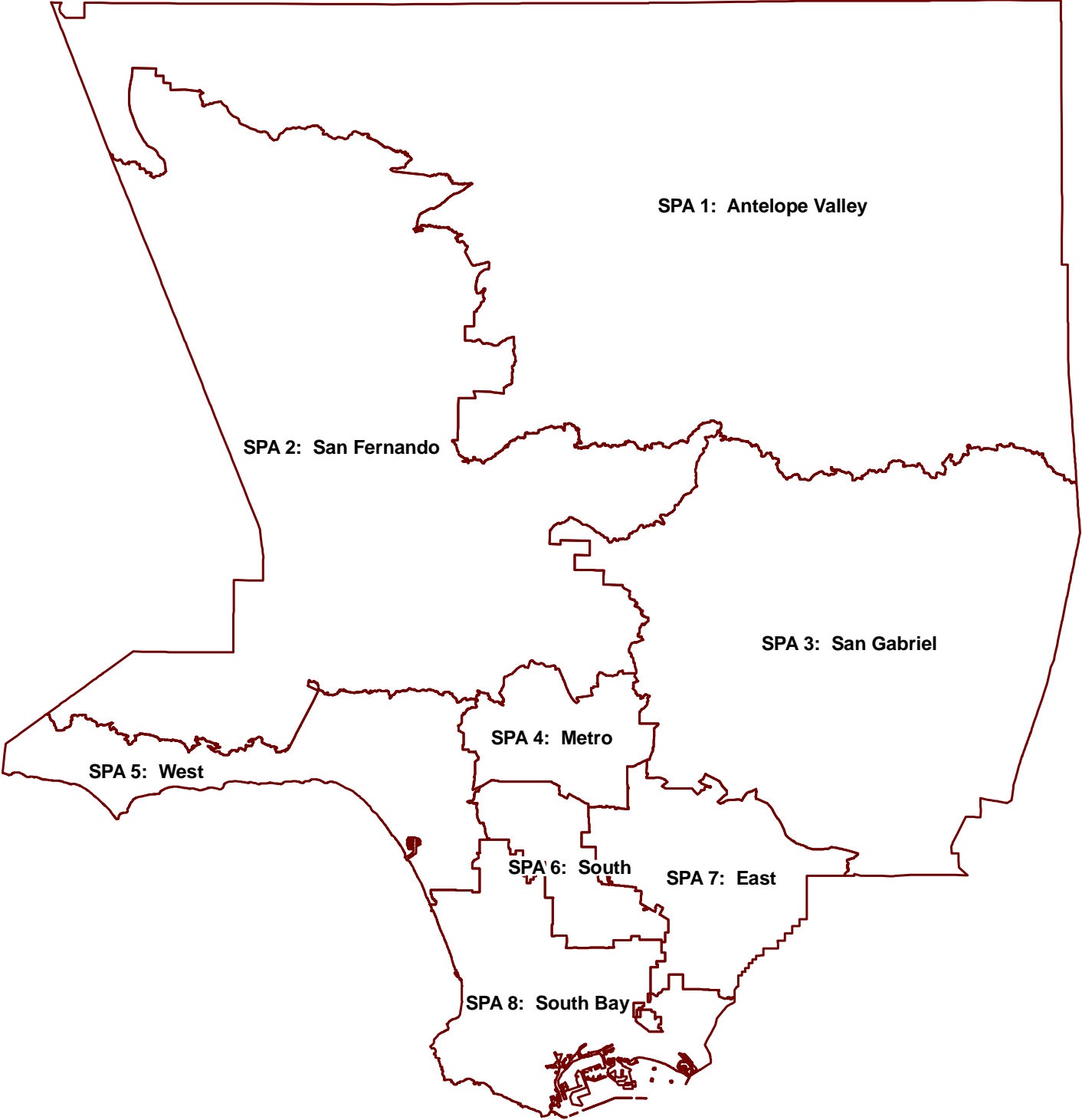


Office of AIDS Programs and Policy
Planning and Research Division




Source: Thomas Brothers, 2006

Service Planning Areas (SPA) (2002) Los Angeles County



Legend

 SPA

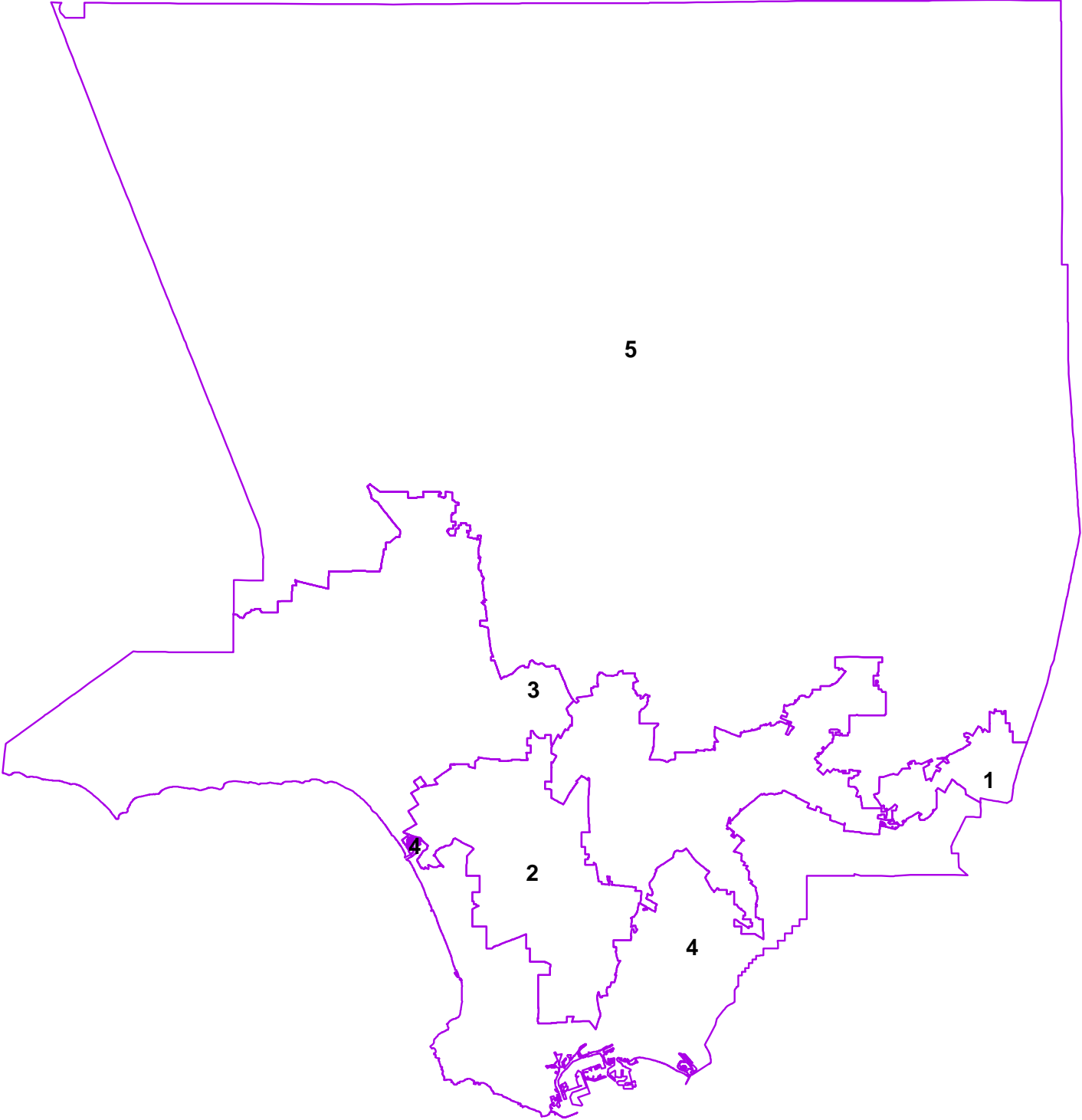


Office of AIDS Programs and Policy
Planning and Research Division



Source: Los Angeles County Chief Executive Office

Supervisorial Districts (2001) Los Angeles County



Legend

 Supervisorial Districts

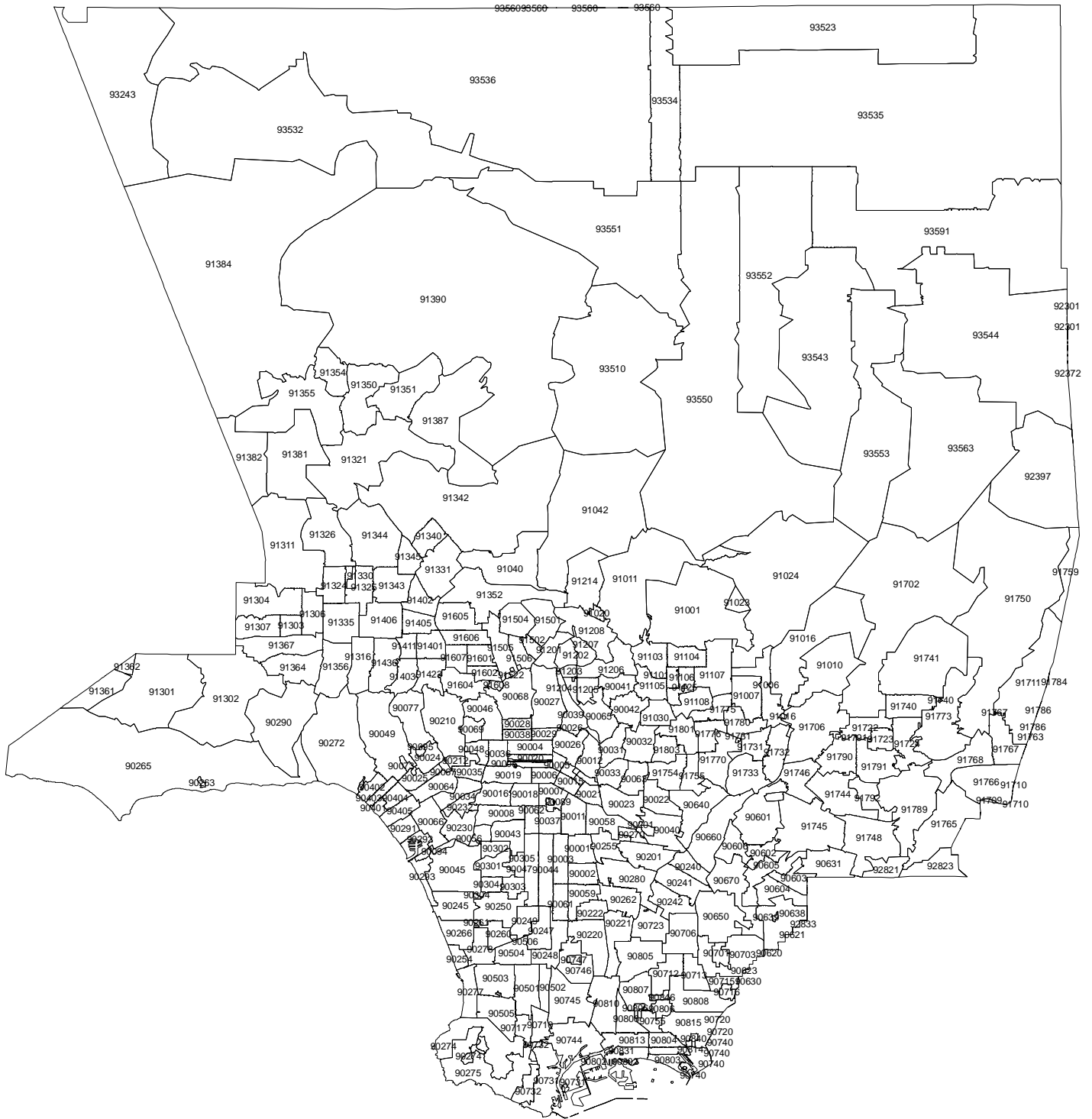


Office of AIDS Programs and Policy
Planning and Research Division



Source: Los Angeles County Chief Executive Office

Zip Codes (2006) Los Angeles County



Legend

 Zip Codes



Office of AIDS Programs and Policy
Planning and Research Division



Source: Thomas Brothers, 2006