



COUNTY OF LOS ANGELES
Public Health

Sexually Transmitted Disease Program

Health Education Unit

Report of Services

2005



2615 South Grand Avenue, Room 500
Los Angeles, CA 90007
Tel: (213) 744-3070 Fax: (213) 749-9606

www.lapublichealth.org/std



JONATHAN E. FIELDING, M.D., M.P.H.
Director and Health Officer

JOHN SCHUNHOFF, Ph.D.
Acting Chief Deputy

Sexually Transmitted Disease Program
PETER R. KERNDT, M.D., M.P.H., DIRECTOR
2615 South Grand Avenue, Room 500
Los Angeles, California 90007
TEL (213) 744-3070 • FAX (213) 749-9606

www.lapublichealth.org

BOARD OF SUPERVISORS

Gloria Molina
First District

Yvonne B. Burke
Second District

Zev Yaroslavsky
Third District

Don Knabe
Fourth District

Michael D. Antonovich
Fifth District

November 3, 2006

Dear Colleague:

I am pleased to release this summary report detailing the services provided by the STD Program's Health Education Unit (HEU) to community members and service providers in Los Angeles County. The attached report summarizes the trends in service delivery activities provided throughout 2005, including community workshops and presentations, STD hotline calls, dissemination of educational materials and condoms and related outreach services.

Some of the year's program highlights for the Health Education Unit are as follows:

- Presentations provided to over 18,800 students in Los Angeles County schools
- Over 980 calls to the STD Hotline answered by live health educators
- Over 1,100,000 condoms and 143,000 infocards distributed to agencies and the public

We hope that you will find this report useful for your agency's programming needs and for locating free STD prevention and education programs.

Sincerely,

A handwritten signature in black ink that reads "Peter R. Kerndt". The signature is fluid and cursive.

Peter R. Kerndt, MD, MPH
Director, Sexually Transmitted Disease Program

Department of Public Health

Jonathan E. Fielding, MD, MPH
Director, Public Health & Health Officer

Robert Kim-Farley, MD, MPH
*Director, Communicable Disease Control
and Prevention*

Sexually Transmitted Disease Program

Peter R. Kerndt, MD, MPH
Director

Sarah Guerry, MD
Medical Director

Jane Steinberg, PhD, MPH
Director, Legislative Affairs

Betsy Swanson Hollinger, MPH
Director, Health Education Unit

Emma Fredua, MPH
Senior Health Educator

Susan Perez, MPH
Senior Health Educator

Kim Harrison, MPH, CHES
Health Educator

Ana Hernandez
Health Education Assistant

Phoebe Macon
Health Education Assistant

Philip Phan
Health Education Assistant

Sally Villanueva
Health Education Assistant

STD Hotline

1-800-758-0880

STD Workshops

213-744-5981 (at STD Program)
213-744-4574 (offsite)

Educational Materials Requests

213-744-5238

Condom Requests

213-744-5952

STD Program Website

<http://www.lapublichealth.org/std>

Technical Consultant

Ellen Rudy PhD, Epidemiology

If you would like to receive surveillance reports and other information from the STD Program, call (213) 744-3070 or register for STDInfo online at www.ladhs.org/listserv to receive surveillance reports and other information via e-mail.

Suggested Citation

Sexually Transmitted Disease Program, Los Angeles County Department of Health Services. *Health Education Unit Report of Services 2005*: pp.1-26.

CONTENTS

I.	Overview - What is the Health Education Unit?	3
II.	STD Presentations	
	1. Service Providers	3
	2. Community Members	5
	3. Continuing Medical Education	6
III.	STD Hotline	
	1. Reason for Calls	6
	2. Seasonality of Calls	7
	3. Disease-Specific Calls	8
	4. Referrals to Public Health Centers	8
	5. How Callers Heard About the Hotline	9
IV.	Distributables and Outreach Activities	
	1. Educational Materials	9
	2. Participation in Health Fairs	10
	3. Condoms Donated to Non-Profit Agencies	10
V.	SPA 6 Activities	
	1. Prevention Connection	11
	2. Community and School Presentations	12
VI.	Other HEU Services	
	1. Technical Assistance Program (TAP)	13
	2. STD Community Interventions Program (SCIP)	13
	3. Sexy, Healthy & Empowered! (SHE)	13
	Appendices	
	A. Agencies Receiving Presentations	14
	B. Agencies in Condom Donation Program	18
	C. Health Education Unit Overview	21
	D. List of HEU Educational Materials	25
	E. Committee and Board Membership	26

I. Overview - What is the Health Education Unit?

The mission of the Health Education Unit (HEU) is to increase the capacity of individuals, organizations, and the community to prevent sexually transmitted diseases (STDs), to limit adverse physical and psychosocial consequences of STDs, and to promote sexual health. HEU provides three distinct levels of service to community members throughout Los Angeles County. These include: 1) STD presentations and technical assistance to service providers, community-based agencies, schools, and youth-serving agencies; 2) STD hotline services; and 3) distribution of free STD resources to community members. Staffed by eight full-time educators, services provided by HEU are as follows:

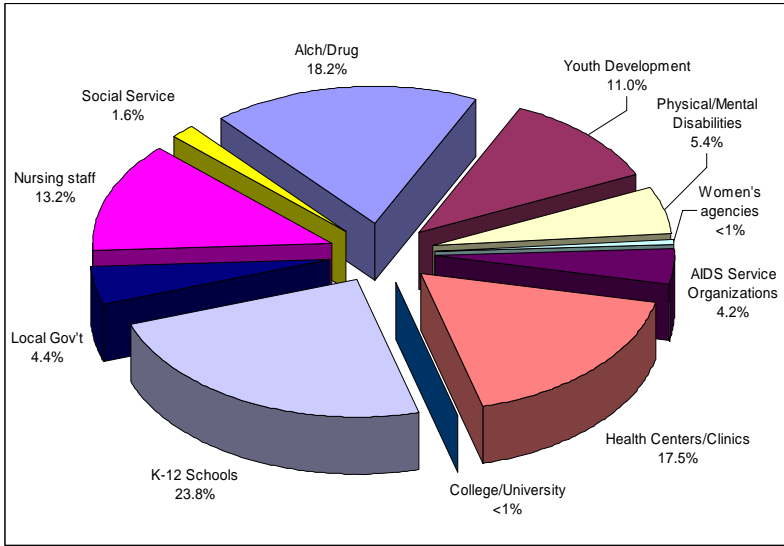
II. STD Presentations

1. STD Workshops for Service Providers

HEU provides a variety of STD workshops for service providers throughout the year. These capacity building workshops follow a “train the trainer” model and are designed for HIV counselors, health educators, case managers and program staff from various AIDS service organizations, drug treatment programs, youth-serving agencies, homeless service programs and other community based agencies. The workshops provide staff with timely, accurate information on STDs and sexually risky behaviors and build skills to improve staff STD prevention efforts in their own agencies. Three types of trainings are provided and are listed below. With the exception of the Nursing In-Service Sessions, all provider workshops are available in Spanish upon request. Please see Figure 1 for a summary of providers trained in 2005.

- **STD 101** is an all-day training held at the STD Program that provides a detailed overview of modes of transmission, symptoms, diagnosis, treatment, and prevention. This training can also be held offsite in a 3-hour format to agencies with 20 or more staff in attendance.
- **Supplemental Workshops** are 3-hour workshops held at the STD Program throughout the year. Topics include: *Herpes and Warts* (February, July and September), *Reducing the Sexual Risks of Your Patients* (February and September), *The ABCs of Hepatitis* (June and November), and *Understanding and Helping Your Substance-Using MSM Clients* (March and October).
- **Nursing In-Service Sessions** are provided on a quarterly basis to both public health and registered nurses new to County service. HEU staff, who participated in three of these sessions in 2005, provide an STD overview while discussing STD risk reduction and partner notification techniques.

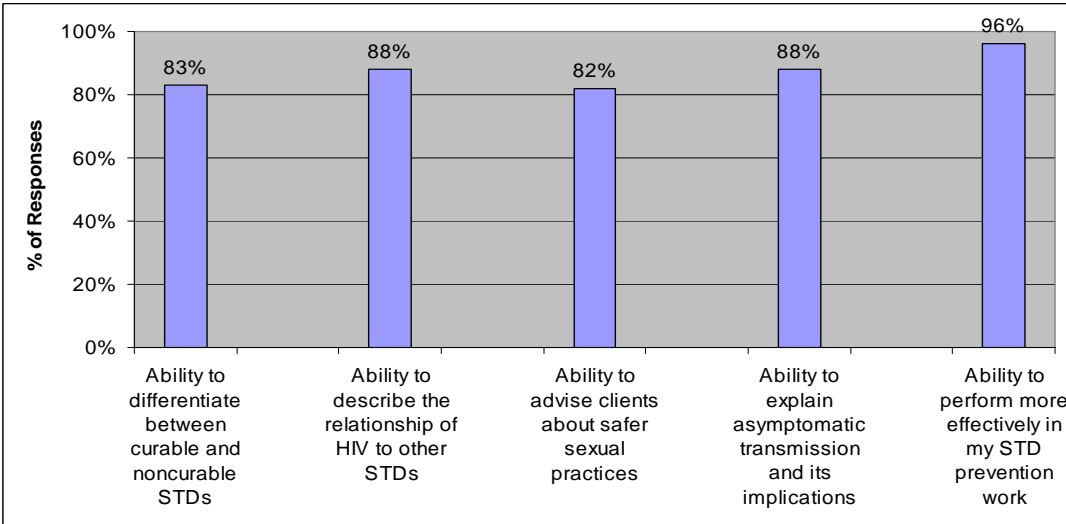
Figure 1. STD Workshops for Service Providers by Agency Type, 2005 (n=919)



After completing the eight-hour STD workshop, service providers complete a follow up evaluation to assess changes in their level of confidence regarding STD knowledge and ability to work with clients at risk of STDs.

For the five on-site STD 101 workshops offered in 2005, 100% of participants attending the training (n=89) completed a follow up evaluation. Figure 2 below provides a summary of the outcomes. Approximately 85% of participants reported an increase in STD prevention knowledge and skills, compared with before attending a workshop. The most significant change was noted in participants' ability to perform more effectively in their STD prevention work, where 95% of participants indicated an increase in their confidence level.

Figure 2. On-Site STD 101 Workshops: Participant Change in Knowledge and Skills, 2005 (n=89)

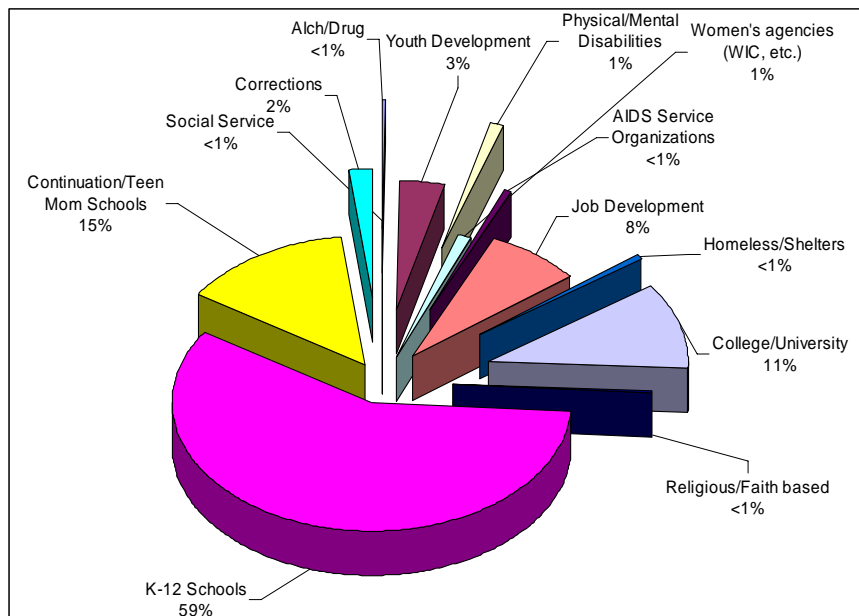


2. STD 101 for Community Members

These presentations provide a basic overview of STDs and focus on epidemiology, symptoms, modes of transmission, testing, complications of STDs and treatment options. Presentations are given to schools, teen mom programs, shelters, Women, Infants and Children Program (WIC), youth-serving agencies, drug and alcohol treatment programs, social and medical service agencies, mental health agencies, and other community agencies throughout Los Angeles County. During 2005, over 21,000 individuals were reached through one or two-hour STD 101 presentations. The majority of these presentations occurred in schools.

Figure 3 below indicates the proportions of clients reached by STD 101 presentations in 2005, categorized by agency type.

Figure 3. Percent of Clients reached by STD 101 Presentations by Agency Type, 2005 (n=21,859)



Students and Youth

Over 18,800 students and youth were reached by STD 101 presentations in 2005. Presentations were made primarily to middle, and high school in health and science classes (59%), followed by continuation and teen mom schools (15%). The curriculum is one to two class sessions long.

3. Continuing Medical Education (CME)

The STD Program plans and implements three-hour CME (3.0 category hours) in-service sessions throughout the year targeted to physicians, nurses, and other staff including public health personnel, social workers, health educators, and other providers of STD services. During 2005, 8 CME inservices were offered on a variety of STD-related topics (Table 1).

Table 1. CME Inservices Provided to STD Service Providers, 2005

Title of CME	Number attended
STD-HIV Cofactor and Understanding the HIV Rapid Test	98
Primary HIV-1 Infection, LGV Briefing, & PCRS Update	80
Drug Use and Sexual Risk	69
Sexual Violence	57
Intimate Partner/Domestic Violence	54
HIV Treatment and Post-Exposure Prophylaxis & PDPT Update	81
New Frontiers in STD Prevention: Occupational Health & Internet Partner Notification	69
HIV and Pregnancy, Congenital Syphilis, & STDP Program Update	68

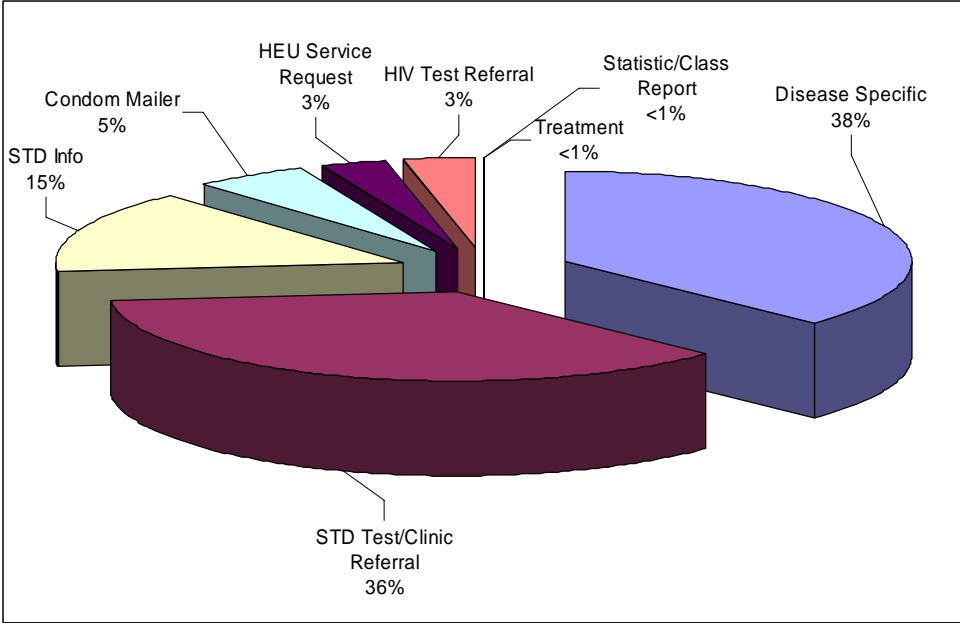
III. STD Hotline

HEU operates a 24-hour toll-free STD/HIV hotline that offers referrals for free or low-cost STD/HIV testing at clinics throughout Los Angeles County. A secondary function of the hotline is to provide answers to common questions about STDs, such as modes of transmission, symptoms, and prevention methods. HEU staff provide this information in a supportive, non-judgmental environment, and free condoms are also offered by mail. The hotline is automated with the option of requesting a live health educator. Trained health educators are available to answer calls in English and Spanish from 9:00 am to 5:00 pm, Monday through Friday.

1. Reason for Calls

In 2005, the health educators received a total of 983 calls. Most callers requested information about particular STDs or information on STD/HIV clinics near their home (Figure 4). Common reasons for calls were as follows: questions about specific STDs, requests for testing and/or treatment sites, had requests for general STD information. HEU staff frequently assist callers in coping with the stigma that often accompanies a diagnosis of incurable but manageable STDs. Staff also provide assistance with methods for telling sex partners about their diagnoses.

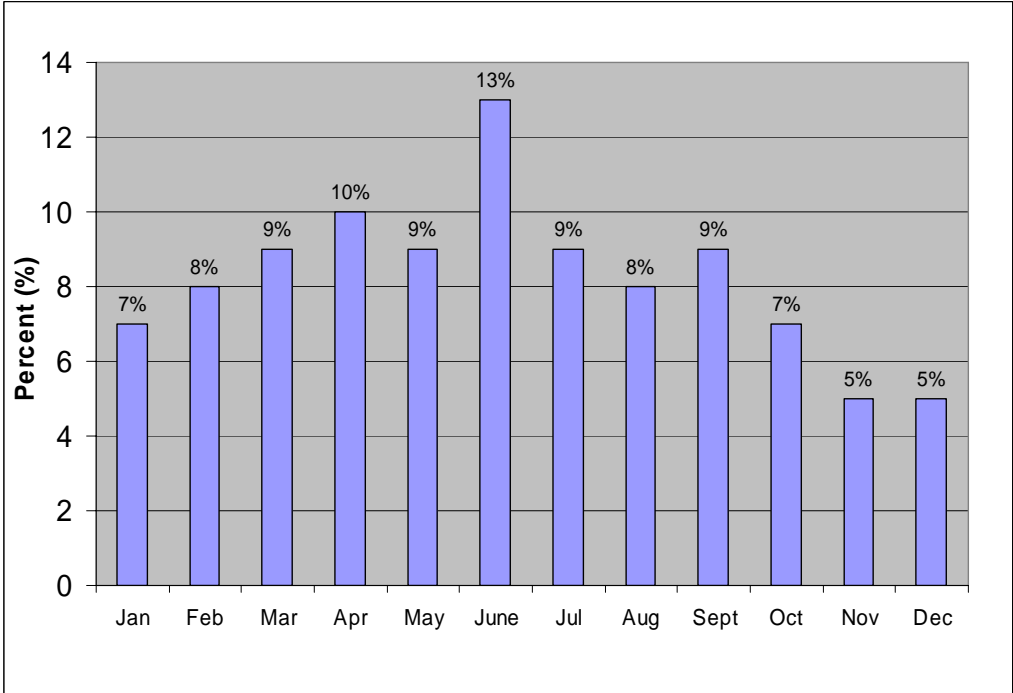
Figure 4. Reasons for Hotline Requests for Live Assistance by Topic, 2005 (n=983)



2. Seasonality of Calls

The majority of requests to speak to a health educator occurred during the months of June and April, followed closely by March, July and September (Figure 5). These months may correspond to periods of increased sexual activity.

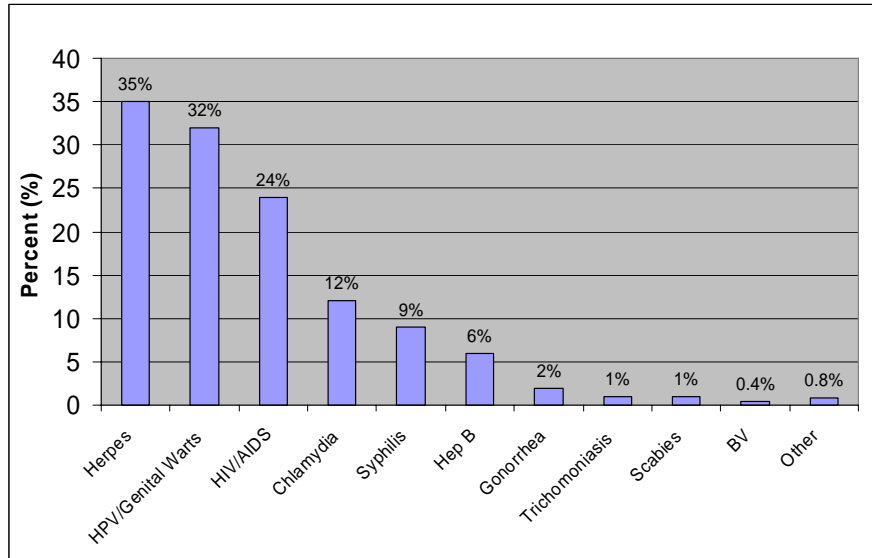
Figure 5. Frequency of Hotline Requests for Live Assistance by Month, 2005 (n=983)



3. Disease-Specific Calls

Of the 983 hotline requests for live assistance, 35% concerned specific STDs. The most common diseases inquired about were: Herpes 35%, HPV 32%, and HIV/AIDS 24% (Figure 6).

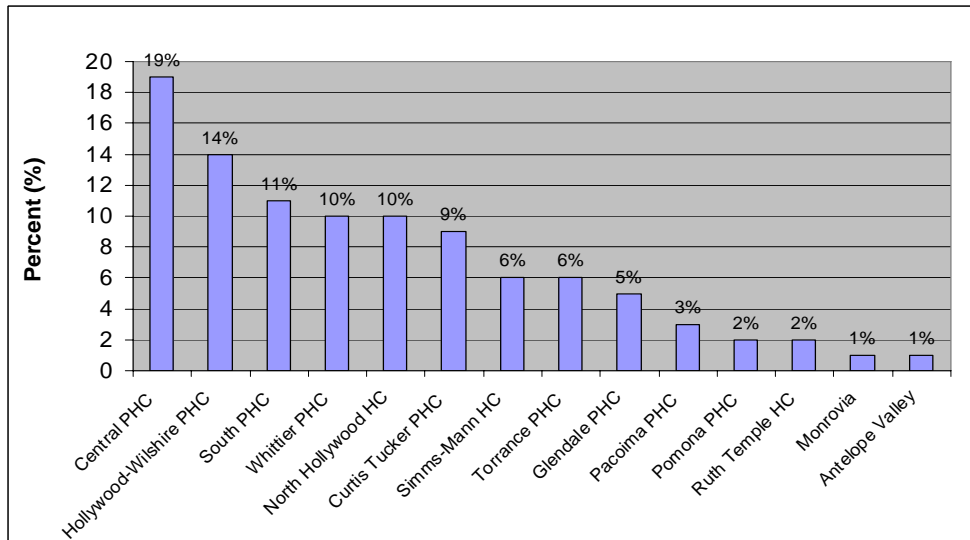
Figure 6. Distribution of Disease-Specific Calls, 2005 (n=346)



4. Referrals to Public Health Centers (PHC)

In keeping with previous trends, HEU staff referred most callers to local STD clinics or to free/low cost clinics near their homes. In 2005, 225 primary caller referrals were made to county STD clinics, the majority of whom were referred to Central PHC and Hollywood-Wilshire PHC in Service Planning Area 4 (Figure 7).

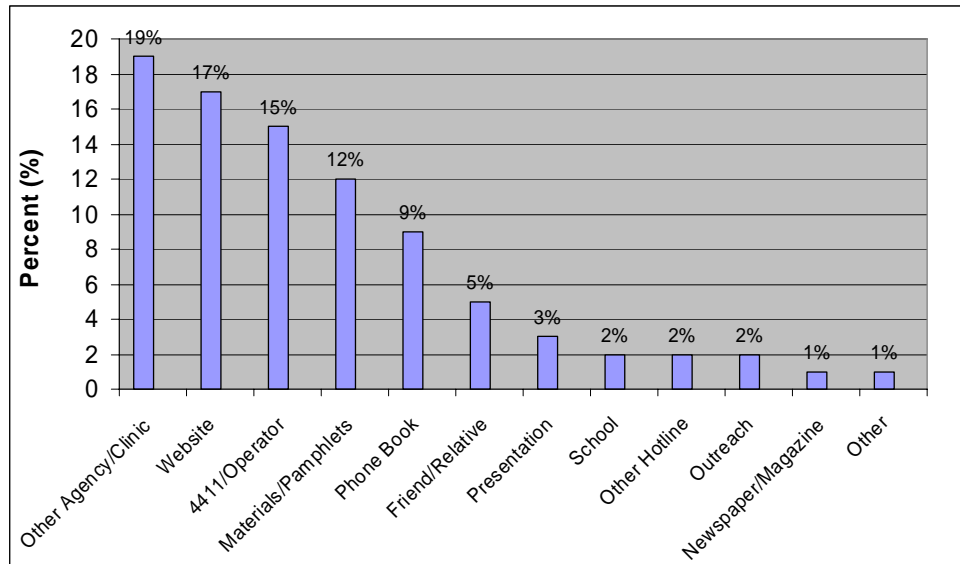
Figure 7. Frequency of Referrals to Public Health Centers, 2005 (n=225)



5. How Callers Heard About the Hotline

Most often, callers found the STD Hotline number via another community agency or clinic (see Figure 8). The STD Program website, Information/411, printed materials, and the phone book also directed a significant number of callers to the hotline.

Figure 8. Distribution of How Callers Heard about the Hotline, 2005 (n=983)



IV. Distributables and Outreach Activities

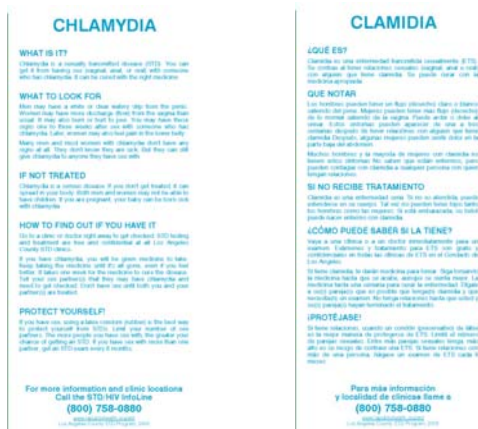
1. STD Educational Materials

The HEU distributes a variety of bilingual educational materials to providers and patients such as fact sheets, brochures, pocket cards and posters. These publications offer basic disease information at a low reading level and are printed in English and Spanish. They are mainly used in clinic waiting rooms or by agencies who serve a range of clients at risk for STDs. Topics include disease information and prevention, the importance of testing, where to get free exams, talking to partners, and how to reach the STD Hotline. Many materials have been developed for special at-risk populations including youth, women, Men Who Have Sex with Men (MSM), Latinos and African-Americans.

STD infocards (see Figure 9), available in English and Spanish for the ten most common STDs, are consistently the most commonly requested materials. In 2005, approximately 143,814 infocards were distributed to agencies throughout Los Angeles County.

Please refer to Appendix D (page 25) for a complete list of HEU educational materials.

Figure 9. Sample of Dual-Sided Bilingual STD Infocard (Chlamydia), 2005



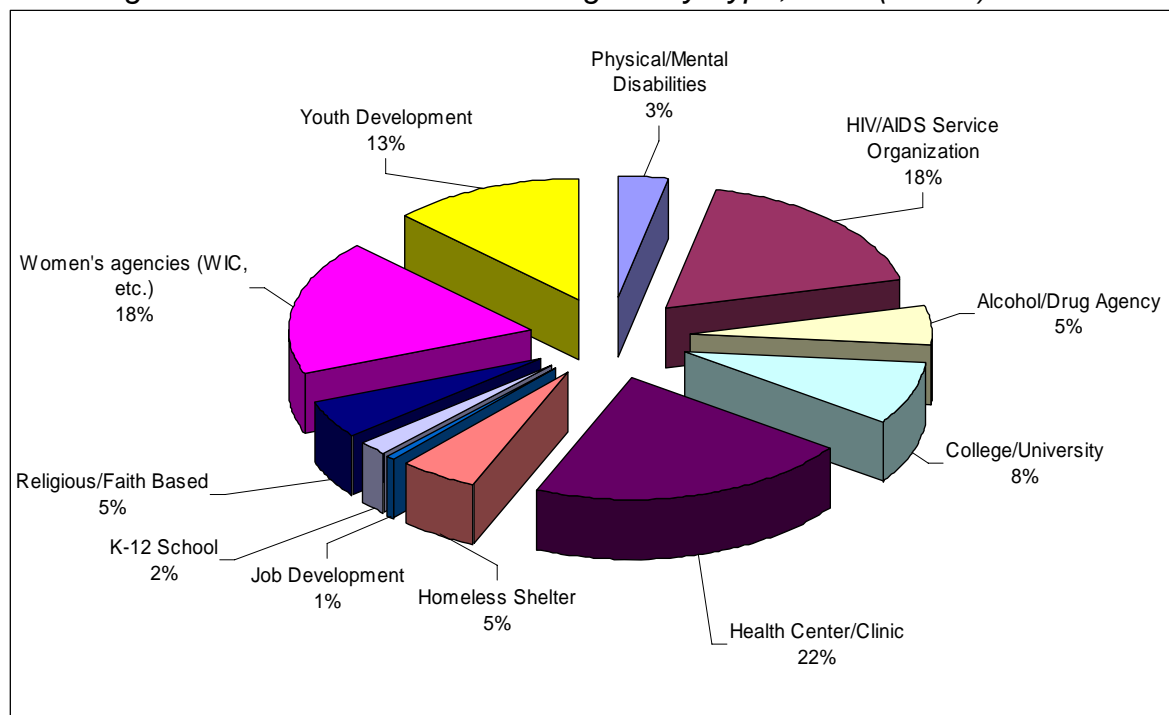
2. Participation in Health Fairs

At health fairs, HEU staff answer questions, distribute condoms and STD educational materials, and play interactive games with booth visitors. Various incentive items are also provided. In 2005, the HEU participated in 34 health fairs throughout Los Angeles County, reaching over 10,721 community members.

3. Condoms Donated to Non-Profit Agencies

HEU's Condom Donation Program for non-profit community agencies donates thousands of condoms each month to any nonprofit agency upon request. Public Health Centers and other county departments also receive condoms from the HEU on an occasional basis. Thousands of condoms are distributed throughout the year at various HEU outreaches such as health fairs. In 2005, 26 new agencies enrolled in the program, and a total of 156 agencies received over 1.1 million condoms (see Figure 10).

Figure 10. Agencies Enrolled in Condom Program by Type, 2005 (n=156)



V. Service Planning Area (SPA) 6 Activities

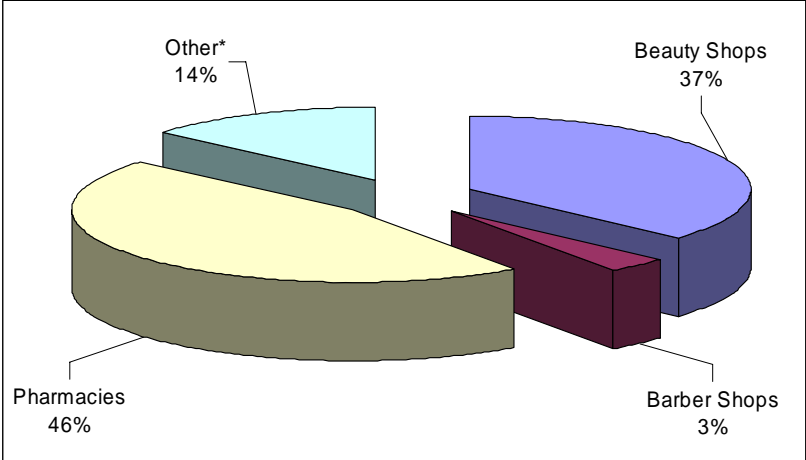
SPA 6 encompasses an area that is located south of downtown Los Angeles and includes such cities as Compton, Lynwood, and Paramount. Due to high rates of STDs in SPA 6, the STD Program offers special programs and ensures that health education presentations are conducted on a regular basis in this area.

1. Prevention Connection

Developed in 1990, this special program trains owners of barbershops, salons, pharmacies, and other businesses to provide STD prevention education, referrals, educational materials, and condoms to customers. This program won a national award in 1997 from 3M Pharmaceuticals for its success as an effective community wide STD education and prevention program.

Approximately 130 salons and pharmacies in South Los Angeles received condoms and STD information on a regular basis as a part of the *Prevention Connection* Program (see Figure 11). In 2005, over 26,000 condoms and educational materials were distributed to Prevention Connection clients.

Figure 11. Agencies Enrolled in Prevention Connection by Type, 2005 (n=117)

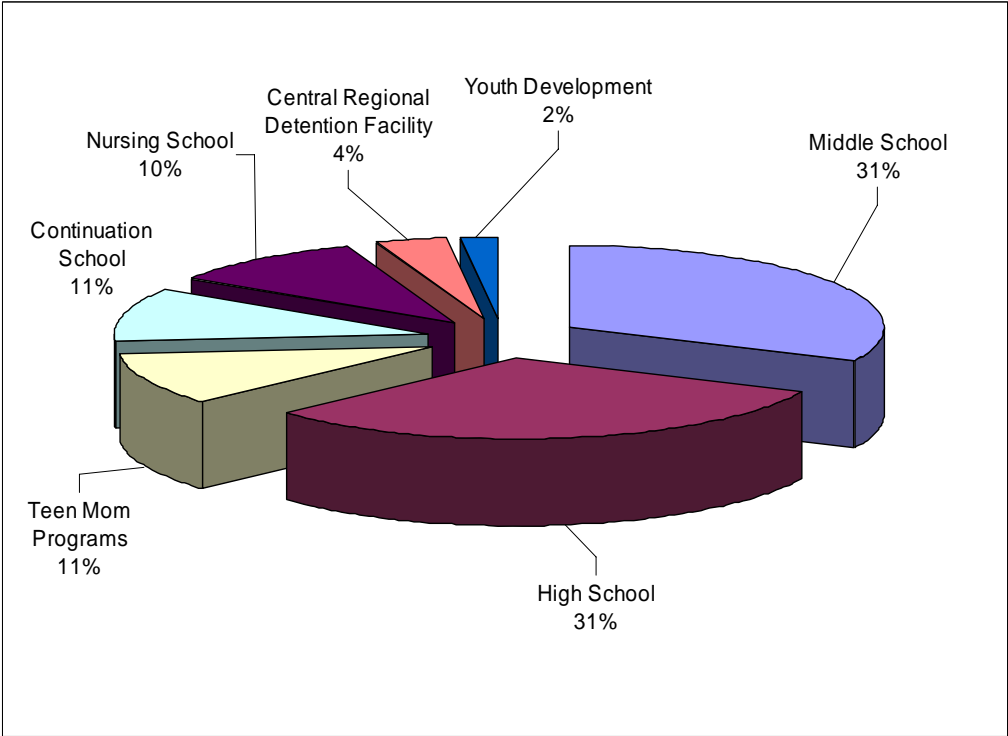


*Note: "Other" category includes beauty supply stores, nail shops, swap meet/mall, social service agencies, women's clinics, law offices, and doctor/nurse practitioner offices.

2. Community and School Presentations

In 2005, 10,755 community members received STD presentations at various venues throughout SPA 6 (see Figure 12).

Figure 12. Distribution of Community Members who Received STD Presentations in SPA 6 by Agency, 2005 (n=10,755)



VI. Other HEU Services

1. Technical Assistance Program (TAP)

TAP provides health education-based technical assistance to clinics, community based organizations, schools and colleges, and other agencies. Assistance can include help with program needs assessment, planning and evaluation, educational materials design, curriculum development, STD prevention skill building for staff, developing STD client risk assessments, and topic-specific training. Approximately 26 agencies received technical assistance in 2005.

2. STD Community Interventions Program (SCIP)

Through collaboration with the California STD Control Branch, the HEU coordinates SCIP for Los Angeles County. SCIP is a state and county program working with youth-serving agencies throughout California to increase the ability of local communities to improve the sexual and reproductive health of youth and young adults. SCIP conducts needs assessments of youth-serving agencies, provides technical assistance and relevant trainings, and facilitates networking among participating agencies. The project was developed and implemented by the California Department of Health Services STD Control Branch.

Over 100 youth-serving agencies currently participate in the Los Angeles County SCIP.

3. Sexy, Healthy & Empowered! (SHE)

SHE is a 4 hour training designed to facilitate discussion about sexual health issues among college-age women in order to increase their knowledge and practice of safer sex. SHE, facilitated by female health educators in a small group setting, creates a non-threatening and non-judgmental atmosphere in which both sexually and non-sexually active women can learn about STDs and build skills to improve their sexual health. SHE covers such important topics as self-esteem, body image, values and attitudes about sex, negotiating safer sex with partners, and specific measures to reduce STD risk.

In 2005, 25 women from a local community college participated in SHE.

Appendix A: Agencies Receiving STD Presentations, 2005

A Community of Friends
Asian American Drug Abuse Program, Incorporated (AADAP)
AASUL Program (Assistance with Alcohol and Sobriety Uniting Latinas)
AIDS Healthcare Foundation - Prevention & Testing Dept.
Alcohol and Drug Administration Program
Alhambra Public Health
All Peoples Christian Center
Alta Med Health Services
American Indian Changing Spirits
Antelope Valley Health Center
Antelope Valley Hope Foundation
Arcadia High School
Arroyo High School
Asian Pacific AIDS Intervention Team
Asian Pacific Health Care Venture
Asian Youth Center
At the Beach
Azusa Pacific College
Bassett High School
Bassett Unified School District - Teen Mom Program
Bell Gardens High School
Beyond the Street
Bienestar Human Services
Bienvenidos Family Services
Bravo Magnet High School
Community Awareness Motivation Partnership (C.A.M.P.)
California State University, Dominguez Hills
California State University, Long Beach
California State University, Northridge
Casa Madonna
Center for Behavioral Research and Services
Center for HIV Identification, Prevention
Central Health Center
Cerritos Community College
Cerritos Teen Moms (Cabrillo Lane)
Cerritos Teen Moms (Tracy High School)
Cesar Chavez
Changing Spirits
Children's Institute
Chinatown Service Center
Citrus College
Citrus Valley Intercommunity Med. Ctr.Mt
CLARO Program (Challenging Latinos to Access Resource Opportunities)
Cleaver Family Wellness Center
Clinica de la Mujer
Clinica Oscar Romero

Common Ground
Community Day
Compton High School
Compton Teen Moms (W.I.C.)
Coronado Continuation School
Correct HELP
Crescent College
Court Referral Information Services Program(CRISP)
Curtis Tucker Health Center
Department of Children & Family Service - V.I.D.A program
Department of Public and Social Services (DPSS)
Department of Mental Health
Destiny Community Day School (Private)
Didi Hirsh Community and Mental Health Center
Dominguez High School
Downtown Chlamydia Mobilization Project
East Los Angeles Men's Clinic
East Los Angeles Occupational Center
East Valley Community Health Center
East Whittier Middle School
EKI Treatment Center
El Camino High School
El Monte High School
El Proyecto del Barrio
FAME Health Corporation
Fedde Middle School
Florence Crittenton Center
Foothill Family Services
Friends Research Institute, Inc.
Garfield High School.
Girls Today, Women Tomorrow
Glendale Public Health Center
Glendora Youth Center
Grace Elliott Clinic
Granada School
Greater Los Angeles Agency on Deafness (GLAD)
Harbor Free Clinic
Health View
High Desert Health System
Hillview School
HIV/Drug and Alcohol Task Force
Hollywood-Wilshire Health Center
Homeless Health Care
Human Services Association
Huntington Park High School
Inglewood High School
Inglewood Teen Moms
James Monroe High School
Jefferson Middle High School

Joint Efforts, Inc.
Kaiser Educational Theater Program
Kaiser Permanente Baldwin Park
L.A Shanti
LA CADA
La Puente High School
La Puente Valley
Latino Family Center
Latino Youth Services
Life Steps
Lifesigns, Inc.
Long Beach City College
Long Beach Department of Health and Human Services
Los Angeles Conservation Corps
Los Angeles County Sheriff's Dept
Los Angeles Gay and Lesbian Center
Lynwood Detention Facility
Lynwood High School
Lynwood Teen Moms
Manual Arts High School
MELA Counseling Services
Mexican American Opportunity Foundation
Milken Community High School
Minority AIDS Project
Monrovia Health Center
Montebello High School – Teen Mom Program
Mount Carmel Treatment Center
Mt San Antonio College
New Community Jewish High School
New Warriors
Nogales High School
North Hollywood Health Center
Northgate Middle School
Norton Medical Clinics
Norwalk High School
Office of AIDS Programs and Policy
Pacific Clinic
Palms Care Facility
People's CORE
Pomona Alternative School
Pomona H.S.- Teen Mom Program
Project Focus
Project Wholeness and Wellness BRUCE
Prototypes Women's Link
REACH LA
Roosevelt Middle School
San Antonio College
San Dimas Special Education
San Gabriel Teen Mom Program

Santa Anita Mental Health Services
Santana High School
SIRENA Program (Self-Empowerment Resources to Educate, Nurture and Advocate)
South Bay Family Health Center
South Central Family Health Center
South El Monte High School
South Health Center
Southern CA Alcohol and Drug Programs
Southwest College
Stepping Stone House
Sunflower Campus - Glendora
Sunrise Community Counseling Center
Sunrise Mental Health
Tarzana Treatment Center
The Children's Clinic
The Children's Institute
The Wall- Las Memorias
Torrance Health Center
Tracy High School
UMMA Community Clinic
University of California, Los Angeles – MPH Program
University of Southern California – MPH Program
Urban Institute of Health Behavior Research
USC State Headstart Program
Van Ness Prevention Division
Venice Family Clinic
Venice Youth Build Program
Verdugo Hills High School
Vista Middle School
Walden House - YEAH (Youth Educating & Advocating Health)
Walden House
Walnut Middle School
Walton Middle School
West LA College
Westchester High School
Whaley Middle School
Whittier Health Center
Whittier Rio Hondo AIDS Project
WIC – East Los Angeles
WIC Program - Pregnant and Teen Parents
WIC Teen Parents – Norwalk
YWCA

APPENDIX B: Agencies Participating in STDP Condom Donation Program, 2005

AB 34 Pacific Clinic
Actors' Fund
Aid for AIDS
AIDS Health Care Foundation
AltaMed Health Services
AltaMed Health Services - ATS
AltaMed Youth Services-Monterey Park
American Asian Pacific Ministries
AIDS Project Los Angeles
At The Beach Los Angeles Black Pride
Atlantic Recovery Services
Avalon-Carver Com Center
Bell Gardens Family Medical Center
Beyond the Streets
Bienestar
Bienvenidos
California Institute of Technology
California Family Health Council
California Women's Commission on Addiction
Caribbean Health Outreach
Cerritos College
Charles Drew Place of Family
Charles Drew University of Medicine & Science
Chevalliers Community of Care
Children's Clinic (5 locations)
City of Duarte – Teen Center
Coach for Kids
Community Assessment Service Center
CSU, Dominguez
CSU, Long Beach
CSU, Northridge
Daniel's Place
Delta Sigma Theta Sorority Inc
Didi Hirsch CMHC
Dome Village/Justiceville USA
Drew Care
East LA Health Task Force
East LA Women's Center
El Centro De Ayuda
El Nido Family Center
El Proyecto Del Barrio
Friend Without Barriers
Gardena HS Clinic
Garfield High
Gay and Lesbian Community Center

Hands United Together
Harbor Free Clinic
Harbor View House
Health Promotion Institute
Homeless Health Care LA
Home-Safe
In The Meantime Men's Group
Joint Efforts, Inc.
Jovenes, Inc.
JWCH
Kaiser - Sunset
L. A. Catholic Workers
Los Angeles City College
L. A. Shanti
LAMP Village
Long Beach Veterans Affairs Healthcare System
Los Angeles Boys of Leather
Los Angeles Valley College
Love For the Children Foundation
MAGIC Program
MELA Counseling Services
MidValley Recovery Services
Mini Twelve Step House
Minority AIDS Project
Mission City Network
Montebello USD
North East Valley Health Corp
Oasis Clinic at King Drew
Occidental College
Pasadena City College
Pediatric & Family Med Center
People In Progress
Planned Parenthood (17 sites)
Project Angel Food
Project Wholeness & Wellness B.R.U.C.E
Prototypes
Prototypes Community Assessment Center
REACH LA
Roosevelt Housing
Santa Monica College
SFV Community Mental Health
Shields for Families
Skid Row Housing
So-Cal Alcohol & Drug Program
South Bay Family Health Care Center
Southeast Community Prevention & Intervention
Spectrum Community Services

SRO Housing
St. John's Well Child and Family Center
Tarzana Treatment Center
Tarzana Treatment Center - Lancaster
The Children Law Center of LA
T.H.E. Clinic
The Guidance Center
UCLA
UCLA (LGBT Resource Center)
UCLA-NPI Center for Com Health
UCLA Student Run Homeless Clinic
Unity Fellowship Church, LA
USA Veteran Association Post 101
Valley Community Clinic/Teen Clinic
Venice Community Housing Corporation
Venice Family Clinic (5 locations)
Weingart Center Association
West LA College
WIC
Wilmington Com Clinic
Women Alive
Women At Risk
Whittier Rio Hondo AIDS Project

APPENDIX C: Health Education Unit Overview, 2005

Los Angeles County Sexually Transmitted Disease Program Health Education Unit

2615 S. Grand Ave. Room 500 λ Los Angeles, CA 90007 λ (213) 744-5949 λ Fax (213)
749-9606

“The mission of the Health Education Unit is to increase the capacity of individuals, organizations and the community to prevent STDs, limit adverse physical and psychosocial consequences of STDs, and promote sexual health.”

Outreach & Education

STD Information and Testing: A toll-free hotline provides referrals for free STD/ HIV testing 24-hours a day. Trained staff is available to answer questions in English and Spanish from 9:00 am to 5:00 pm Monday through Friday. Callers are also able to request free condoms and STD prevention information to be mailed to them. The STD hotline number is (800) 758-0880. Facts about STDs, risk-reduction information, clinic locations and schedules, STD Program newsletters, local STD data and reports, and other resources are available to the STD Program website: www.lapublichealth.org/std.

Materials: The Health Education Unit distributes more than 350,000 pamphlets a year on STD/HIV prevention and sexual health topics through County STD clinics, community based health fairs, and presentations. Posters and other prevention materials are also available. For more information, please contact Sally Villanueva at (213) 744-5238.

Audio-Visual Resources: Videos and the STD “Canned” slide presentation, which allows borrowers to follow a script with 25 pre-selected STD slides, are available for loan. The canned presentation is also available in a Microsoft PowerPoint version. Contact Kim Harrison at (213) 744-45912 for more information.

Condoms: The Health Education Unit distributes more than 500,000 condoms each year free of charge to non-profit, community-based organizations. Limited quantities are available to agencies serving individuals at high risk for STDs and HIV. Please contact Philip Phan at (213) 744-5952 for more information.

Internship Opportunities

Opportunities are available for students and volunteers who want to learn more about STDs, gain experience in program development, and assist the unit with its goals. For more information, please contact Betsy Swanson Hollinger at (213) 744-4575.

Community Resources

Staff Training: STD workshops and other specialized trainings are available year-round at the STD Program office, and can also be scheduled at agencies with 20 or more staff requiring training. Workshops are listed on the back side of this sheet. For a list of scheduled workshops, or to register for a workshop at your site, please contact Emma Fredua at (213) 744-4574.

STD Presentations: STD educational presentations are provided in English and Spanish to students, clients, patients and other community members. Presentations are tailored to meet audience needs. Materials are also available for staff of community-based agencies and schools to provide their own STD presentations (see Audio-Visual Resources). Please contact Susan Perez at (213) 744-5981 for more information.

Health Fairs and Outreach Events: Staff are available to attend health and community fairs, and other events such as night clubs, bars, and dances. Staff can answer questions, distribute condoms and educational materials, and play interactive games. Please contact Ana Hernandez at (213) 744-3057 for more information.

Prevention Connection: This special project trains owners of barbershops, salons, pharmacies, and other businesses to provide STD prevention education, referrals, educational materials, and condoms to customers. Contact Phoebe Macon at (213) 744-5955 for more information.

Youth and Schools

Resources, curriculum development and related technical assistance is available for teachers and other school staff on providing STD information to students, and helping young people reduce risky behaviors. Staff can also work with schools to provide on-site STD screening for students. The Health Education Unit also collaborates with organizations, such as radio stations and night clubs, to sponsor risk reduction events for youth. For more information, please contact Betsy Swanson Hollinger at (213) 744-4575.

Other STD Program Services

Los Angeles County STD Clinics: Free and confidential STD diagnosis and treatment are provided at all County STD clinics. Call the STD Hotline at (800) 758-0880 for clinic locations and hours.

STD Statistics: STD morbidity data for Los Angeles County is available from the Epidemiology Division. Call (213) 744-3120 or access the annual report at www.lapublichealth.org/std/reports.

Assistance for Providers: The Nursing Division provides medical consultation and in-services to clinicians and other health care providers in the public and private sectors on the diagnosis, treatment, follow-up and referral of patients with STDs. Call (213) 744-3106 for more information.

Outreach Services: The Mobile Testing Unit provides STD/HIV education, counseling, and testing services for at-risk, underserved groups. For more information, call Carol McGee at (213) 744-5921.

Assistance for HIV Positive Patients: The HIV Partners Service Unit can assist HIV positive individuals with informing their sex or needle sharing partners about their exposure to HIV, or train providers to perform counseling to patients. Call (213) 744-3370.

School Support: Materials, educational workshops, and support services to schools and other youth-serving agencies are available. Call Harlan Rotblatt at (213) 744-5903 or Betsy Swanson Hollinger at (213) 744-4575 for assistance.

STD Program Health Education Unit Workshops for 2005

The STD Program Health Education Unit provides a variety of workshops and trainings designed to meet the needs of HIV test counselors, health educators, program directors, case managers, teachers, and other health professionals.

STD 101: This class covers STD transmission, symptoms, diagnosis, and treatment, and prevention (8 hour workshops are offered 5 times a year). For staff of 20 or more, staff can come to your site for a 3-hour workshop.

Reducing the Sexual Risks of Your Patients: This training is targeted to new clinic staff (nurses, public health investigators, outreach workers, health educators, etc.) to help them talk to clients about STDs and help them reduce their risks of STDs. This training teaches those who need more comfort and communication skills how to become more client-centered and gives them the opportunity to practice sexual risk reduction. (3 hours).

Herpes and Genital Warts: This workshop provides an in-depth look at the two most prevalent viral STDs. The focus is not only on transmission, symptoms, diagnosis, and treatment, but on the psychosocial aspects of managing these diseases as well (3 hours).

ABC's of Hepatitis: An in-depth look at the trends, transmission, symptoms, and new testing and treatment regimens for Hep A, B, and C (3 hours).

Understanding and Helping Your Substance Using MSM Clients: This skills-building, sensitivity-based training looks at the relationship between substance use and STD/HIV risk among Men Who Have Sex With Men. Given the widespread use of sex-enhancing substances such as crystal methamphetamine and increasing syphilis and HIV cases among MSM, it is important for service providers to be aware of these issues when counseling or case managing clients. This introductory training is geared toward service providers who may not be aware that their client is MSM or using substances (6-7 hours).

For a schedule of STD workshops or to register, please download the schedule/registration form on the web at www.lapublichealth.org/std.

**The following workshops can be held at your facility for groups of 20 or more.
Please call Emma Fredua at (213) 744-4574 for more information.**

Teacher Trainings: Teachers want their students to be healthy adolescents, not just STD scholars. This training gives teachers accurate information about STDs as well as health promotion activities, prevention methods and skill-building exercises for their students. Teachers also receive activities for in-class projects and homework assignments (1-2 hour workshop).

Talking to Your Kids about Sex (and STDs) for Parents: This workshop examines a variety of methods and guidelines for talking to your children about sensitive issues while providing information and helpful tips (1-2 hours).

APPENDIX D: HEU Educational Materials, 2005

1. Dual-Sided Infocards (English and Spanish) for the following STDs:
 - Chlamydia
 - Crabs
 - Genital Warts
 - Gonorrhea
 - Hepatitis B
 - Herpes
 - HIV/AIDS
 - Scabies
 - Syphilis
 - Vaginitis
2. "STD Facts" Tri-Fold Brochure (English and Spanish)
3. "How to Use a Condom" Mini Brochure (English and Spanish)
4. "STD Quicksheet" Flyer (English and Spanish)
5. STD Wallet Cards (English and Spanish)
6. STD Hotline Wallet Cards (English and Spanish)
7. Yeast Infection Tri-Fold Brochure (English and Spanish)
8. Trichomoniasis Tri-Fold Brochure (English and Spanish)
9. Bacterial Vaginosis Tri-Fold Brochure (English and Spanish)
10. STD Picture Sheets: Viral, Bacterial, and Other (English and Spanish)
11. STD Hotline Poster and Handout (English and Spanish)
12. "The Blame Game" Poster and Handout (English and Spanish)
13. "I Told My Partner" Poster and Handout (English and Spanish)
14. "Talking To Your Partner" Poster and Handout (English and Spanish)
15. "Your Clinic Visit" Poster and Handout (English and Spanish)
16. "It's A Good Idea To Talk To Your Partner" Poster and Handout (English and Spanish)

APPENDIX E: Committee and Board Membership, 2005

In 2005, Health Education Unit staff participated in the following committees and boards:

Black Infant Health Program Advisory Board

Compton Unified School District Advisory Board

Department of Public Health CME Committee

Downtown Chlamydia Mobilization Project

STDP/SPA Clinic Strategic Planning Committee

Los Angeles County Health Education Taskforce

LAUSD HIV Prevention Unit Materials Board (Chair)

Planned Parenthood of Los Angeles Community Advisory Board

SERENA (Self-Empowerment Resources to Educate, Nurture, and Advocate)

STOPP (Southeast Teen Opportunities & Prevention Program)

Los Angeles County Department of Public Health Editorial Board, "The Public's Health"

USC MPH Program Advisory Committee



COUNTY OF LOS ANGELES
Public Health

Sexually Transmitted Disease Program

2615 South Grand Avenue, Room 500
Los Angeles, CA 90007
Tel: (213) 744-3070 Fax: (213) 749-9606

www.lapublichealth.org/std