

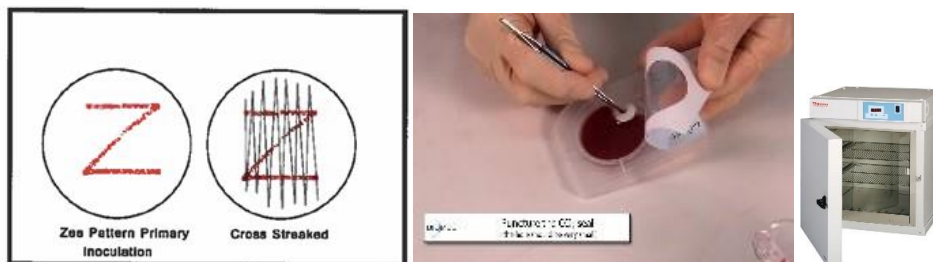
## Gonorrhea Culture Quick Sheet

### How to prepare gonorrhea cultures to send to Los Angeles County Public Health Laboratories

1. Set up materials for sample collection.
2. Examine InTray to check the following before use and discard if:
  - a. Expiration out of date
  - b. InTray media is desiccated, cracked, or contaminated
3. Let InTray GC come to room temperature, ideally 15 minutes prior to use.
4. Apply the patient identifier label to the InTray. **Important: Affix appropriate specimen source sticker and special handling sticker.**
5. Partially peel back the outer blue window tray seal to expose inner protective seal. Do not completely remove the outer blue window tray seal.
6. Pull the tab to remove the white foil inner seal and discard.



7. Gently replace outer blue window tray seal.
8. Collect patient specimen as indicated (urethral, throat, rectal, and vaginal) using the appropriate swab type. **Use a swab that has a dacron or polyester tip and plastic shaft for throat/rectal/vaginal and polyester mini-tip flexible wire shaft swab for urethral/cervical.**
9. Inoculate specimen on the surface of the agar by rolling the swab across the plate using a "Z" or "N" pattern. Discard swab. Cross-streak immediately with a separate sterile swab.



10. Puncture the seal over the CO<sub>2</sub> chamber with a pointed single use object such as a swab tip.
11. **FIRMLY RESEAL** the InTray by pressing the edges of the plate sealing film and the plastic tray together. Place InTray in biohazard specimen bag.
12. Immediately incubate the InTray flat with plate seal and patient label facing up. Do not invert the InTray. **Incubate at 37°C for 24 hours at the clinic.**
  - a. If you miss the Friday courier, contact public health lab for consultation. Ideally, cultures are not collected on Friday without prior lab approval and consultation.
13. After incubation, submit to laboratory as soon as possible. InTray should be transported in a biohazard specimen bag. If applicable, insert specimen test requisition into outer biohazard specimen bag pouch. Complete specimen tracking log or attach computerized tracking log to accompany specimens to the lab.
14. Transport InTray at room temperature in the biohazard specimen pouch.

## Gonorrhea Culture Quick Sheet

### How to prepare gonorrhea cultures to send to Los Angeles County Public Health Laboratories

Note: For best results, remove InTray from incubator and prepare specimen for courier transport no more than 1 hour before scheduled courier pick up. Incubator temperature must be checked and documented daily. Incubator temperature acceptable range is 36°C +/- 1°C. Thermometer must be calibrated annually.