

Domestic Violence

DOMESTIC VIOLENCE

INDICATOR: Hospitalizations of Females Ages 13 and Over Due to Assaultive Injuries by Spouse or Partner

DEFINITION: The rate of hospitalizations due to assaultive injuries by spouse or partner (E967.3) per 100,000 females (13 and over)

NUMERATOR: Total number of females (13 and over) hospitalized due to assaultive injuries by spouse or partner (E967.3), by place of residence, in a calendar year

DENOMINATOR: The total female population (13 and over), by place of residence, in a calendar year

HEALTHY PEOPLE 2010 OBJECTIVE: None

Domestic Violence: Hospitalization due to violent injuries among females (ages 13 and over)

Year	California				Los Angeles County			
	Number	Rate	95% Confidence Interval		Number	Rate	95% Confidence Interval	
			Lower	Upper			Lower	Upper
2004	124	0.8	0.7	1.0	23	0.6	0.3	0.8
2005	129	0.9	0.7	1.0	30	0.7	0.5	1.0
2006	102	0.7	0.5	0.8	18	0.4	0.2	0.6
2007	114	0.7	0.6	0.9	27	0.6	0.4	0.9
2008	109	0.7	0.6	0.8	26	0.6	0.4	0.8
2009	114	0.7	0.6	0.8	30	0.7	0.4	0.9
2010	95	0.6	0.5	0.7	15	0.4	0.2	0.5
2011	118	0.8	0.6	0.9	23	0.5	0.3	0.8
2012	109	0.7	0.6	0.8	18	0.4	0.2	0.6
2013	114	0.7	0.6	0.8	20	0.5	0.3	0.7

Denominator: Total Female Population Ages 13 and Over		
Year	California	LA County
2004	14,830,182	4,086,034
2005	15,052,031	4,133,467
2006	15,280,183	4,184,581
2007	15,504,123	4,237,622
2008	15,724,481	4,289,011
2009	15,937,320	4,336,400
2010	15,564,295	4,168,228
2011	15,699,689	4,188,815
2012	15,825,129	4,211,913
2013	15,964,105	4,238,055

Note: ICD-9-CM Diagnosis E967.3 - Perpetrator of child or adult abuse by spouse or partner or by ex-spouse or ex-partner.

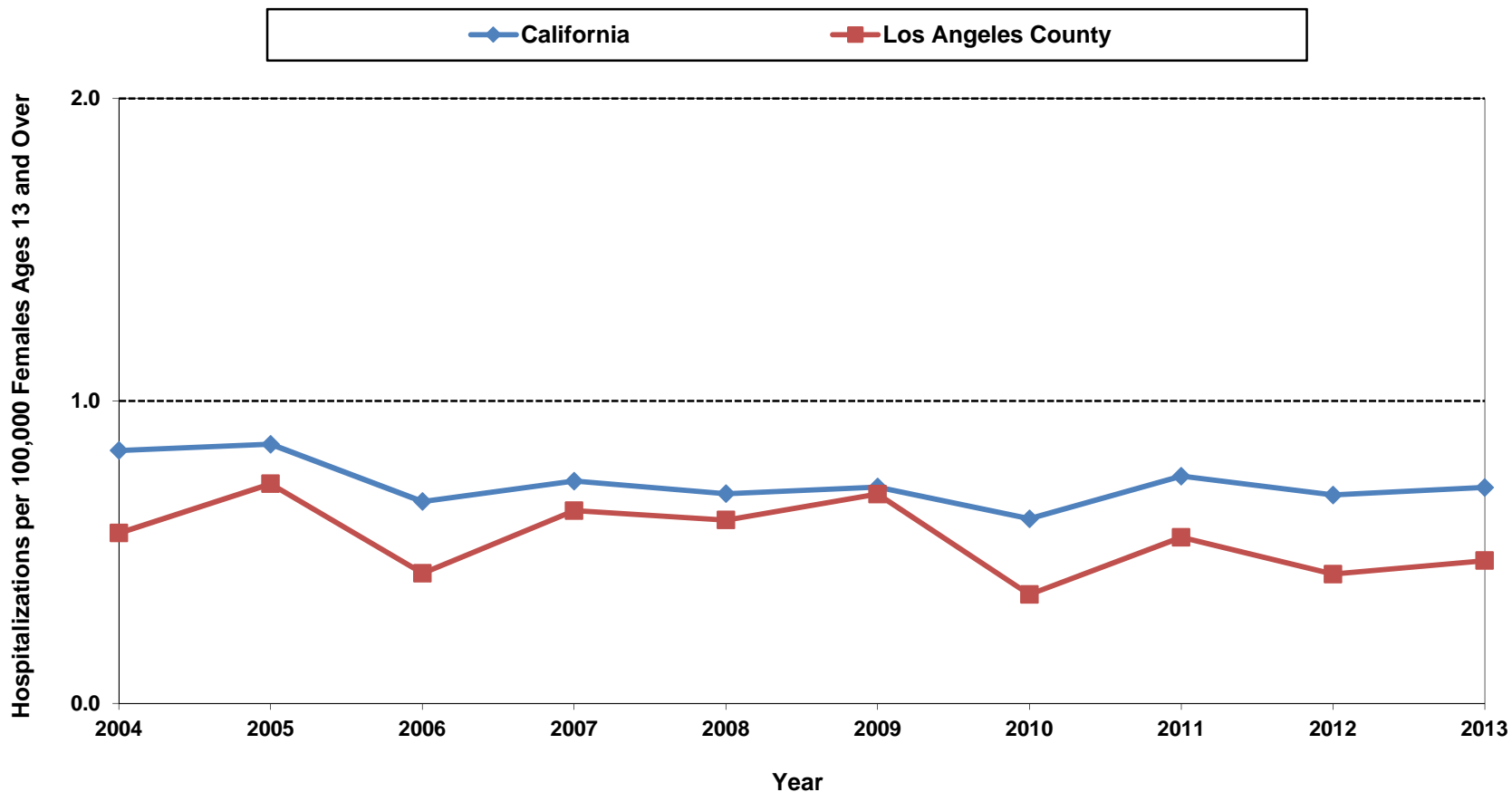
Source: California Office of Statewide Health Planning & Development, Patient Discharge Data. Prepared by California Department of Public Health, Epidemiology & Prevention for Injury Control (EPIC) Branch, Injury Surveillance & Epidemiology Section. Data retrieved on October 1, 2014

Denominator Data: California Department of Finance, "Race/Ethnic Population with Age & Sex Detail, 1970-2050", Sacramento, California, May 2004.

Denominator Data: California Department of Finance, "Race/Ethnic Population with Age & Sex Detail, 1970-2050", Sacramento, California, July 2007.

Denominator Data: California Department of Finance, "Race/Ethnic Population with Age and Sex Detail, 2010-2060", Sacramento, California, January 2013.

**Hospitalization per 100,000 Females Ages 13 and Over
Due to Assaultive Injuries by Spouse or Partner
California vs. Los Angeles County, 2004-2013**



Note: ICD-9-CM Diagnosis E967.3 - Perpetrator of child or adult abuse by spouse or partner or by ex-spouse or ex-partner.

Source: California Office of Statewide Health Planning & Development, Patient Discharge Data. Prepared by California Department of Public Health, Epidemiology & Prevention for Injury Control (EPIC) Branch, Injury Surveillance & Epidemiology Section. Data retrieved on October 1, 2014
 Denominator Data: California Department of Finance, "Race/Ethnic Population with Age & Sex Detail, 1970-2050", Sacramento, California, May 2004.
 Denominator Data: California Department of Finance, "Race/Ethnic Population with Age & Sex Detail, 1970-2050", Sacramento, California, July 2007.
 Denominator Data: California Department of Finance, "Race/Ethnic Population with Age and Sex Detail, 2010-2060", Sacramento, California, January 2013.

DOMESTIC VIOLENCE

INDICATOR: Deaths Due to Assaultive Injuries (Homicides) among Adolescent and Adult Females Ages 10-44

DEFINITION: The three year average rate per 100,000 females (ages 10-44) of deaths due to homicide (E-Codes 960.0-969.0)

NUMERATOR: The number of deaths due to homicide among females (ages 10-44), by place of residence (three year average)

DENOMINATOR: The total female population age 10 through 44 for the middle year of the three year time period of interest

HEALTHY PEOPLE 2010 OBJECTIVE:
Reduce homicides to no more than 3.2 per 100,000 people.
(Objective 15-32) - (include all age groups)

HEALTHY PEOPLE 2020 OBJECTIVE:
Reduce homicides to no more than 5.5 per 100,000 people.
(Objective 29) - (include all age groups)

Risk Factors: Low income; gender (male); age (teens, young adults); race/ethnicity (African American, Hispanic); history of abuse (victim of spousal/intimate, or child abuse); easy access to firearms; presence of firearms at home

Numerator: Homicides to Females Ages 10-44		
Year	California	LA County
2004	215	80
2005	231	89
2006	240	89
2007	241	74
2008	202	73
2009	192	64
2010	183	63
2011	183	49
2012	175	40
2013	160	38

Domestic Violence: Deaths due to homicide among females (ages 10 to 44 years)

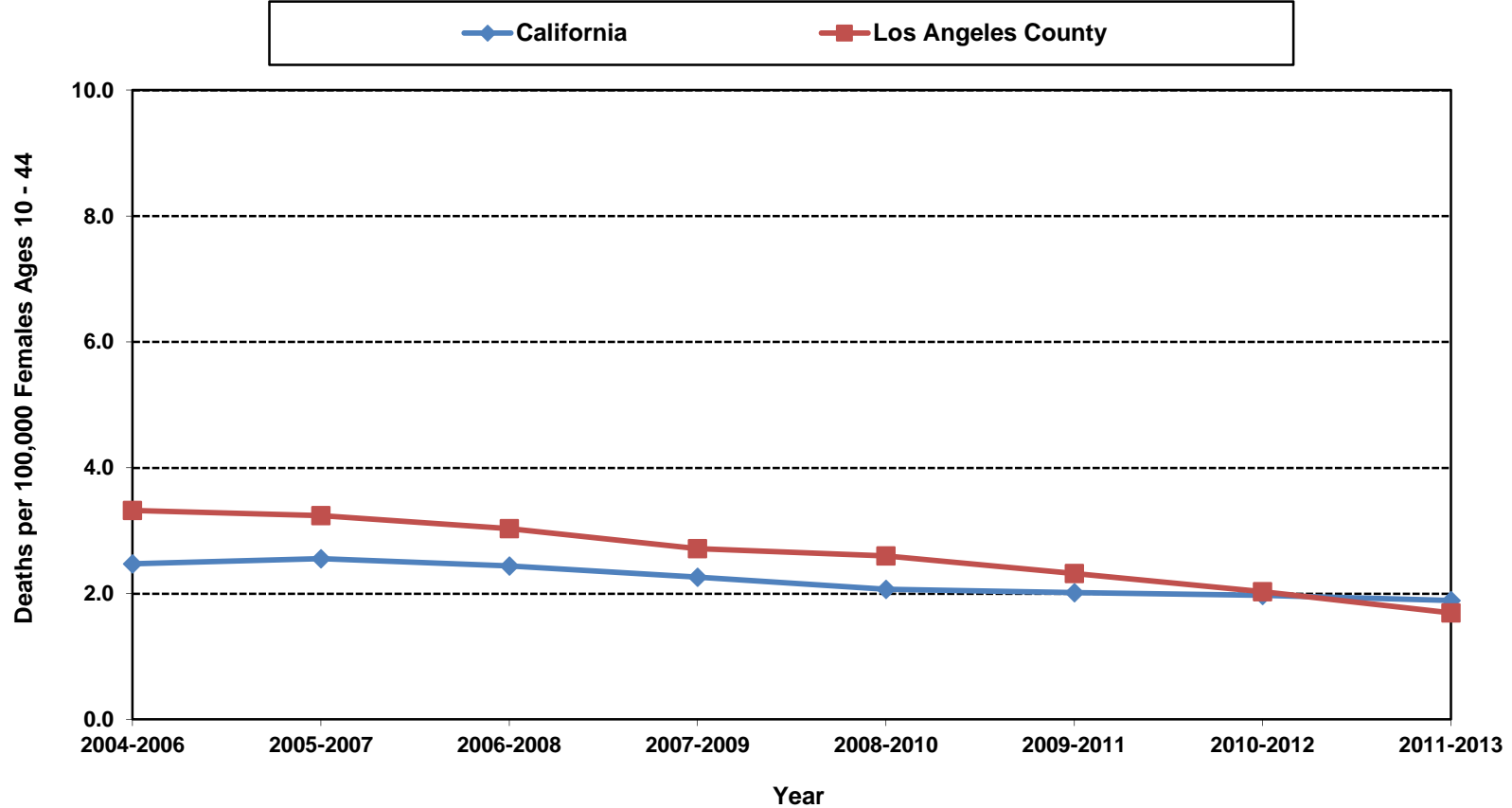
Three-Year Average	California				LA County			
	Number	Rate	95% Confidence Interval		Number	Rate	95% Confidence Interval	
			Lower	Upper			Lower	Upper
2004-2006	229	2.5	2.2	2.8	86	3.3	2.6	4.0
2005-2007	237	2.6	2.2	2.9	84	3.2	2.5	3.9
2006-2008	228	2.4	2.1	2.8	79	3.0	2.4	3.7
2007-2009	212	2.3	2.0	2.6	70	2.7	2.1	3.3
2008-2010	192	2.1	1.8	2.4	67	2.6	2.0	3.2
2009-2011	186	2.0	1.7	2.3	59	2.3	1.7	2.9
2010-2012	180	2.0	1.7	2.3	51	2.0	1.5	2.6
2011-2013	173	1.9	1.6	2.2	42	1.7	1.2	2.2

Denominator: Total Female Population Ages 10-44		
Year	California	LA County
2004	9,216,542	2,589,845
2005	9,252,659	2,589,394
2006	9,299,804	2,594,730
2007	9,333,359	2,596,875
2008	9,358,874	2,593,939
2009	9,379,622	2,588,766
2010	9,151,478	2,513,058
2011	9,155,218	2,499,857
2012	9,151,981	2,488,374
2013	9,141,886	2,513,517

Note: Because there is no domestic violence-specific external cause of injury (E-Code) in the current International Classification of Diseases (ICD) codebook, the numerator in this template reflects deaths due to all types of assaults except data for California 2000. Prior to 1999, ICD-9 codes E960-E969 were used; after 1999, ICD-10 codes U01-U02, X85-Y09 and Y87.1 were used. Data from California Department of Public Health, Epidemiology and Prevention for Injury Control (EPIC) Branch does not include ICD-10 code Y87.1 for assault (homicide) by all other and unspecified means and their sequelae.

Sources: California Department of Public Health, Center for Health Statistics, OHIR Vital Statistics Section, 2004-2013
Denominator Data: California Department of Finance, "Race/Ethnic Population with Age & Sex Detail, 1970-2050", Sacramento, California, May 2004.
Denominator Data: California Department of Finance, "Race/Ethnic Population with Age & Sex Detail, 1970-2050", Sacramento, California, July 2007.
Denominator Data: California Department of Finance, "Race/Ethnic Population with Age and Sex Detail, 2010-2060", Sacramento, California, January 2013.

**Deaths Due to Assaultive Injuries (Homicides)
per 100,000 Females Ages 10 to 44
California vs. Los Angeles County
Three-Year Averages, 2004-2013**



Note: Because there is no domestic violence-specific external cause of injury (E-Code) in the current International Classification of Diseases (ICD) codebook, the numerator in this template reflects deaths due to all types of assaults except data for California 2000. Prior to 1999, ICD-9 codes E960-E969 were used; after 1999, ICD-10 codes U01-U02, X85-Y09 and Y87.1 were used. Data from California Department of Public Health, Epidemiology and Prevention for Injury Control (EPIC) Branch does not include ICD-10 code Y87.1 for assault (homicide) by all other and unspecified means and their sequelae.

Source: California Department of Public Health, Center for Health Statistics, OHIR Vital Statistics Section, 2004-2013

Denominator Data: California Department of Finance, "Race/Ethnic Population with Age & Sex Detail, 1970-2050", Sacramento, California, May 2004.

Denominator Data: California Department of Finance, "Race/Ethnic Population with Age & Sex Detail, 1970-2050", Sacramento, California, July 2007.

Denominator Data: California Department of Finance, "Race/Ethnic Population with Age and Sex Detail, 2010-2060", Sacramento, California, January 2013.

DOMESTIC VIOLENCE

INDICATOR: Domestic Violence-Related Calls for Assistance

DEFINITION: The rate per 1,000 adult population (ages 18 and over) of domestic violence calls to law enforcement agencies

NUMERATOR: Total domestic violence-related calls for assistance to law enforcement agencies, by place of residence, in a calendar year

DENOMINATOR: The total adult population (ages 18 and over), by place of residence, in a calendar year

HEALTHY PEOPLE 2020 OBJECTIVE:

None

Domestic Violence-related calls for assistance in the adult population (ages 18 and over)

Year	California				Los Angeles County			
	Number of Calls	Rate	95% Confidence Interval		Number of Calls	Rate	95% Confidence Interval	
			Lower	Upper			Lower	Upper
2004	186,439	7.0	7.0	7.0	48,041	6.6	6.5	6.7
2005	181,362	6.7	6.7	6.7	45,684	6.2	6.2	6.3
2006	176,299	6.4	6.4	6.5	43,508	5.9	5.8	5.9
2007	174,649	6.3	6.3	6.3	43,416	5.8	5.8	5.9
2008	166,343	5.9	5.9	5.9	43,458	5.7	5.7	5.8
2009	167,087	5.8	5.8	5.9	43,014	5.6	5.5	5.6
2010	166,361	5.9	5.9	6.0	42,052	5.7	5.6	5.7
2011	158,548	5.6	5.6	5.6	39,817	5.3	5.3	5.4
2012	157,634	5.5	5.5	5.5	39,253	5.2	5.1	5.2
2013	151,325	5.2	5.2	5.3	37,038	4.8	4.8	4.9

Denominator: Total Adult Population Ages 18 and Over		
Year	California	LA County
2004	26,637,093	7,287,728
2005	26,998,154	7,346,813
2006	27,392,671	7,412,995
2007	27,803,081	7,452,332
2008	28,242,702	7,588,678
2009	28,695,960	7,691,014
2010	28,039,250	7,437,595
2011	28,355,882	7,503,243
2012	28,655,634	7,570,542
2013	28,967,836	7,640,268

Note: Local police jurisdictions' mandated reporting on "domestic violence-related calls for assistance" is one data source commonly used to describe the frequency of domestic violence in California, because it is population-based and easily accessible. However, these data only illustrate local law enforcement practices and response to domestic violence calls and are not an adequate source for measuring either the prevalence or incidence of domestic violence injuries.

Data cannot be broken down by age; therefore, calls included both adults and juveniles.

Sources: California Department of Justice, Division of Law Enforcement, Law Enforcement Information Center Special Report, Domestic Violence-Related Calls for Assistance by Type of Call and Weapon, by County, 2004-2013.

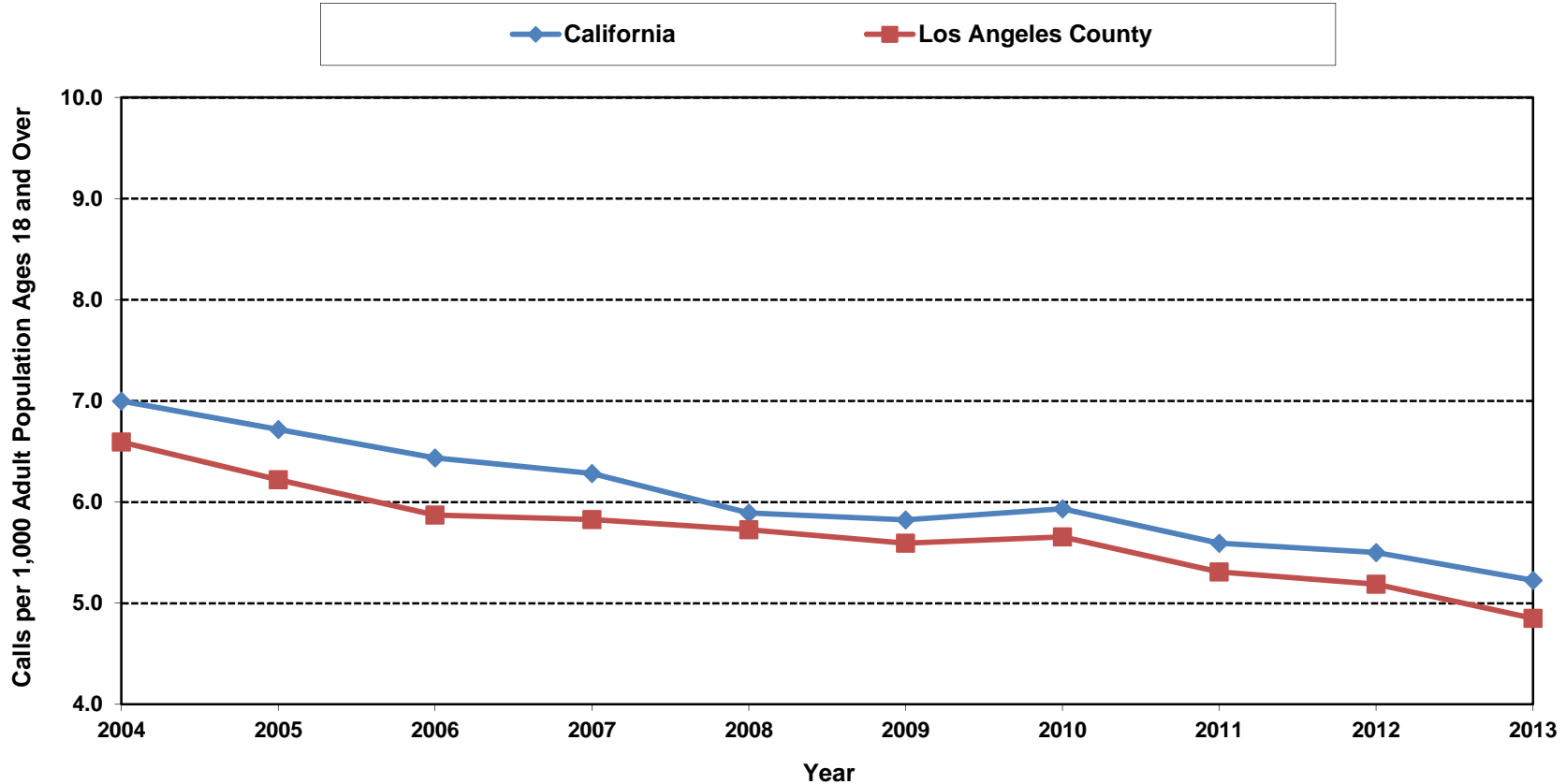
California Department of Justice, Criminal Justice Statistics Center, Special Request Unit, California Criminal Justice Profile 2004-2013.

Denominator Data: California Department of Finance, "Race/Ethnic Population with Age & Sex Detail, 1970-2050", Sacramento, California, May 2004.

Denominator Data: California Department of Finance, "Race/Ethnic Population with Age & Sex Detail, 1970-2050", Sacramento, California, July 2007.

Denominator Data: California Department of Finance, "Race/Ethnic Population with Age and Sex Detail, 2010-2060", Sacramento, California, January 2013.

**Domestic Violence Calls to Law Enforcement Agencies
per 1,000 Adult Population Ages 18 and Over
California vs. Los Angeles County, 2004-2013**



Note: Local police jurisdictions' mandated reporting on "domestic violence-related calls for assistance" is one data source commonly used to describe the frequency of domestic violence in California, because it is population-based and easily accessible. However, these data only illustrate local law enforcement practices and response to domestic violence calls and are not an adequate source for measuring either the prevalence or incidence of domestic violence injuries.

Data cannot be broken down by age; therefore, calls included both adults and juveniles.

Sources: California Department of Justice, Division of Law Enforcement, Law Enforcement Information Center Special Report, Domestic Violence-Related Calls for Assistance by Type of Call and Weapon, by County, 2004-2013.

California Department of Justice, Criminal Justice Statistics Center, Special Request Unit, California Criminal Justice Profile 2004-2013.

Denominator Data: California Department of Finance, "Race/Ethnic Population with Age & Sex Detail, 1970-2050", Sacramento, California, May 2004.

Denominator Data: California Department of Finance, "Race/Ethnic Population with Age & Sex Detail, 1970-2050", Sacramento, California, July 2007.

DOMESTIC VIOLENCE

INDICATOR: Domestic Violence-Related Calls for Assistance: Proportion of Cases with Weapons

DEFINITION: The number and proportion of domestic violence-related calls to law enforcement agencies that involved weapons

NUMERATOR: Number of domestic violence-related calls with weapons

DENOMINATOR: Total number of domestic violence calls to law enforcement agencies

HEALTHY PEOPLE 2020 OBJECTIVE: None

Domestic Violence-Related Calls for Assistance: Cases with weapons

Los Angeles County							
Year	Domestic violence-related calls for assistance			Number by Type of Weapon			
	Number of Calls	Proportion (%)	Number with Weapons	Firearm	Knife or Cutting Instrument	Other Dangerous Weapon	Hands, Fist, Feet, etc.
2004	52,790	71.6%	37,817	671	1,639	5,650	29,860
2005	48,041	71.7%	34,430	513	1,481	4,766	27,670
2006	45,684	71.9%	32,862	528	1,353	4,449	26,532
2007	43,508	67.7%	29,445	460	1,229	3,881	23,875
2008	43,416	63.0%	27,340	411	1,145	3,383	22,401
2009	43,458	62.5%	27,152	398	1,160	3,108	22,486
2010	43,014	61.7%	26,541	345	1,086	2,995	22,115
2011	42,052	62.3%	26,197	347	888	2,968	21,994
2012	39,253	63.0%	24,732	297	1,021	2,723	20,691
2013	37,038	65.5%	24,277	276	931	2,817	20,253

Note: Data cannot be broken down by age; therefore, calls included both adults and juveniles.

Source: California Department of Justice, Division of Law Enforcement, Law Enforcement Information Center Special Report,

Domestic Violence-Related Calls for Assistance by Type of Call and Weapon, by County, 2004-2013.

California Department of Justice, Criminal Justice Statistics Center, Special Request Unit, California Criminal Justice Profile 2004-2013.

DOMESTIC VIOLENCE

INDICATOR: Domestic Violence: Arrest Rate for Spousal Abuse

DEFINITION: The rate per 1,000 adult population (ages 18 and over) of arrest for domestic violence incidence

NUMERATOR: The total number of adults arrested for spousal abuse (violation of Penal Code Section 273.5, male and female perpetrators), by place of residence, in a calendar year

DENOMINATOR: The total adult population (ages 18 and over), by place of residence, in a calendar year

HEALTHY PEOPLE 2020 OBJECTIVE: None

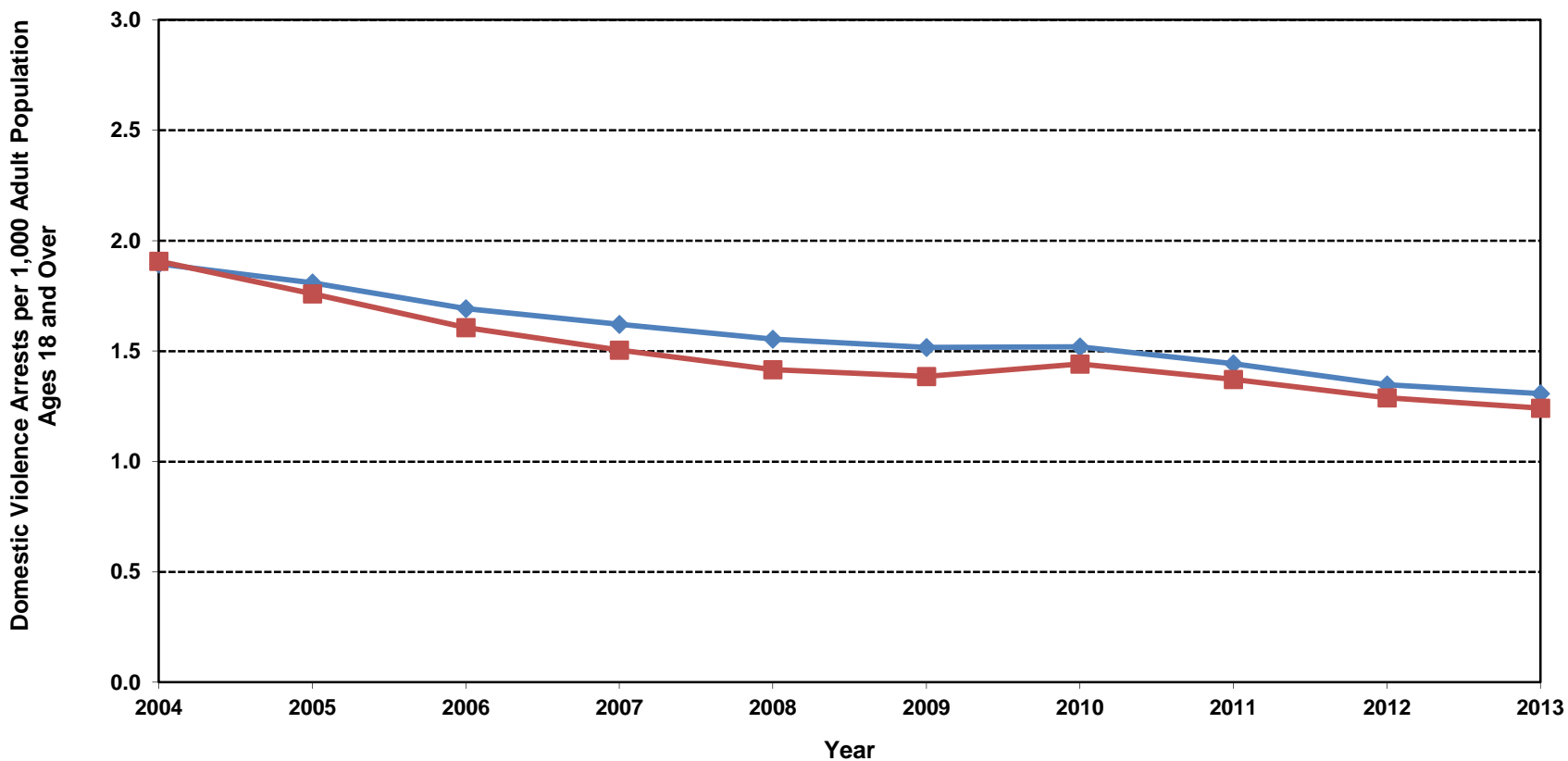
Domestic Violence: Arrests for spousal abuse

Year	California						Los Angeles County						Denominator: Total Adult Population Ages 18 and Over	
	Total	Male	Female	Rate	Lower 95% CI	Upper 95% CI	Total	Male	Female	Rate	Lower 95% CI	Upper 95% CI	California	LA County
2004	50,479	40,885	9,594	1.9	1.9	1.9	13,899	11,234	2,665	1.9	1.9	1.9	26,637,093	7,287,728
2005	48,854	39,325	9,529	1.8	1.8	1.8	12,931	10,485	2,446	1.8	1.7	1.8	26,998,154	7,346,813
2006	46,353	37,235	9,118	1.7	1.7	1.7	11,911	9,633	2,278	1.6	1.6	1.6	27,392,671	7,412,995
2007	45,083	36,116	8,967	1.6	1.6	1.6	11,208	9,120	2,088	1.5	1.5	1.5	27,803,081	7,452,332
2008	43,911	35,264	8,647	1.6	1.5	1.6	10,741	8,665	2,076	1.4	1.4	1.4	28,242,702	7,588,678
2009	43,515	34,213	9,302	1.5	1.5	1.5	10,652	8,458	2,194	1.4	1.4	1.4	28,695,960	7,691,014
2010	42,588	33,411	9,177	1.5	1.5	1.5	10,722	8,577	2,145	1.4	1.4	1.5	28,039,250	7,437,595
2011	40,926	31,244	9,682	1.4	1.4	1.5	10,291	8,050	2,241	1.4	1.3	1.4	28,355,882	7,503,243
2012	38,609	29,343	9,266	1.3	1.3	1.4	9,752	7,594	2,158	1.3	1.3	1.3	28,655,634	7,570,542
2013	37,877	28,895	8,982	1.3	1.3	1.3	9,489	7,298	2,191	1.2	1.2	1.3	28,967,836	7,640,268

Source: California Department of Justice, Criminal Justice Statistics Center, "Review of Domestic Violence Statistics, 1990-2003", Data retrieved June 12, 2007.
 California Department of Justice, Criminal Justice Statistics Center, Special Request Unit, 2004-2013
 Denominator Data: California Department of Finance, "Race/Ethnic Population with Age & Sex Detail, 1970-2050", Sacramento, California, May 2004.
 Denominator Data: California Department of Finance, "Race/Ethnic Population with Age & Sex Detail, 1970-2050", Sacramento, California, July 2007.
 Denominator Data: California Department of Finance, "Race/Ethnic Population with Age and Sex Detail, 2010-2060", Sacramento, California, January 2013.

**Domestic Violence Arrests
per 1,000 Adult Population Ages 18 and Over
California vs. Los Angeles County, 2004-2013**

◆ California ■ Los Angeles County



Source: California Department of Justice, Criminal Justice Statistics Center, "Review of Domestic Violence Statistics, 1990-2003", Data retrieved June 12, 2007.
 California Department of Justice, Criminal Justice Statistics Center, Special Request Unit, 2004-2013
 Denominator Data: California Department of Finance, "Race/Ethnic Population with Age & Sex Detail, 1970-2050", Sacramento, California, May 2004.
 Denominator Data: California Department of Finance, "Race/Ethnic Population with Age & Sex Detail, 1970-2050", Sacramento, California, July 2007.
 Denominator Data: California Department of Finance, "Race/Ethnic Population with Age and Sex Detail, 2010-2060", Sacramento, California, January 2013.