

Prenatal Care

TITLE V INDICATOR TEMPLATE

INDICATOR: First Trimester Onset of Prenatal Care (PNC)

DEFINITION: The percent of live born infants whose mothers received prenatal care in the first trimester of pregnancy

NUMERATOR: The number of live births to women who received prenatal care during the first trimester, by place of residence, in a calendar year

DENOMINATOR: The total number of live births, by place of residence, in a calendar year

HEALTHY PEOPLE 2020 OBJECTIVE:

Increase the proportion of pregnant women who receive prenatal care in the first trimester of pregnancy to 77.9 percent of live births.
(Baseline: 70.8 percent of pregnant women in 2007) (Objective MICH-10.1)

RISK FACTORS:

For not obtaining early prenatal care Low income; young maternal age/teen pregnancy; low maternal education level; race/ethnicity (African American, Hispanic, American Indian/Alaska Native); high parity; maternal substance abuse; lack of health insurance; lack of obstetric providers

Year	California				Los Angeles County			
	First Trimester Prenatal Care		95% Confidence Interval		First Trimester Prenatal Care		95% Confidence Interval	
	Number	Percent	Lower	Upper	Number	Percent	Lower	Upper
2004	466,463	85.6	85.5	85.7	136,144	89.9	89.7	90.0
2005	470,955	85.8	85.7	85.9	136,020	90.5	90.3	90.6
2006	478,973	85.2	85.1	85.3	137,077	90.3	90.1	90.4
2007	459,188	80.9	80.8	81.0	129,741	85.5	85.3	85.6
2008	445,108	80.7	80.6	80.8	123,251	83.5	83.3	83.6
2009	428,449	81.3	81.2	81.4	116,717	83.6	83.4	83.8
2010	416,759	81.7	81.6	81.8	110,516	83.0	82.8	83.2
2011	410,213	81.7	81.6	81.8	106,307	81.6	81.4	81.8
2012	412,679	81.9	81.8	82.0	106,996	81.2	81.0	81.5
2013	406,305	82.2	82.1	82.3	105,259	81.9	81.7	82.1

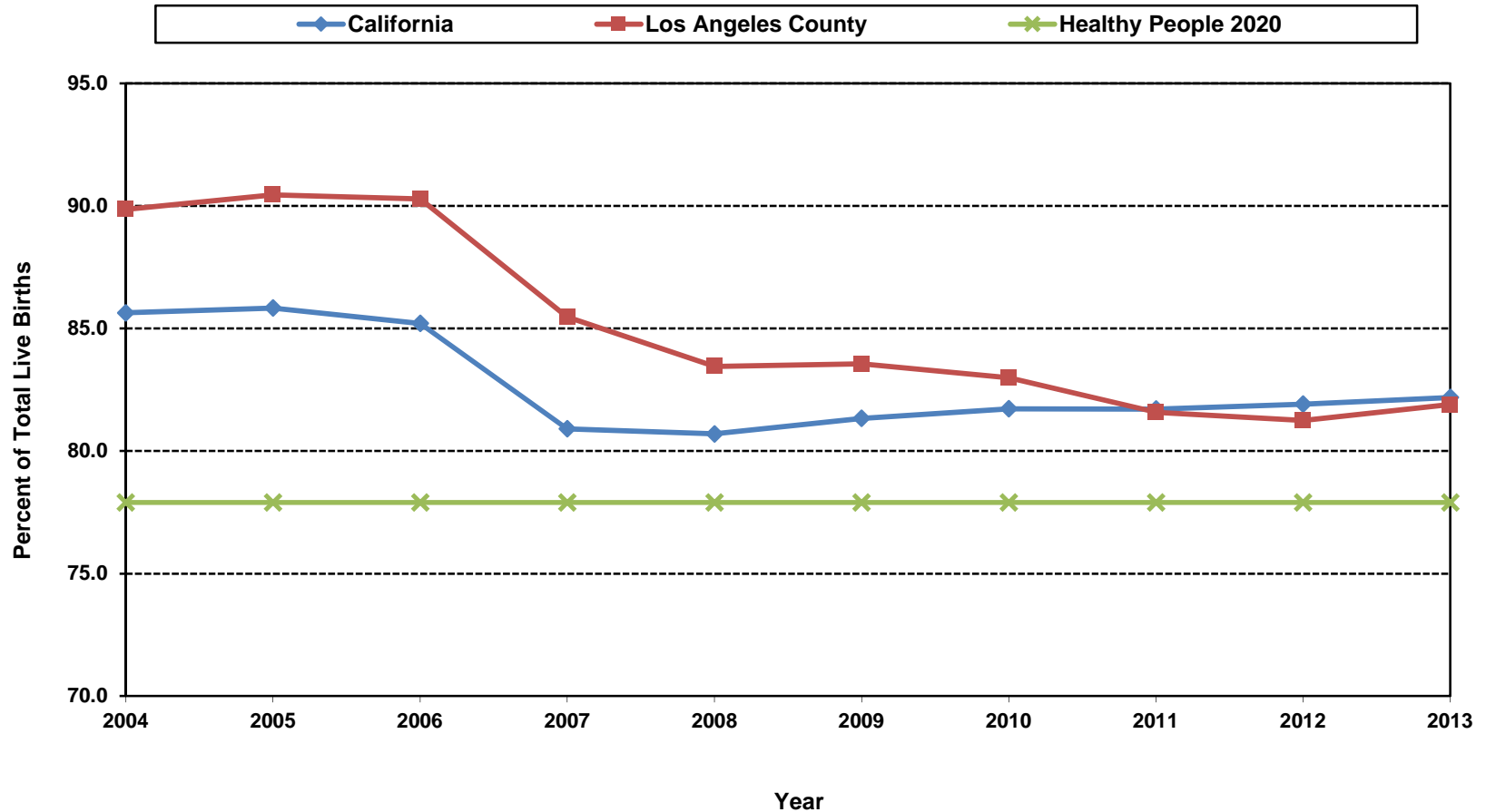
Denominator: Live Births		
Year	California	LA County
2004	544,685	151,504
2005	548,700	150,377
2006	562,157	151,837
2007	567,527	151,813
2008	551,567	147,684
2009	526,774	139,679
2010	509,979	133,160
2011	502,023	130,313
2012	503,788	131,697
2013	494,392	128,526

Note: The decrease in first-trimester entry in 2007 is due at least in part to a recategorization of this data in birth certificates.

This measure excludes the prenatal care experiences of all women whose pregnancies did not result in live births.

Source: California Department of Public Health, Center for Health Statistics, OHIR Vital Statistics Section, 2004-2013.

Percent of First Trimester Onset of Prenatal Care California vs. Los Angeles County, 2004-2013



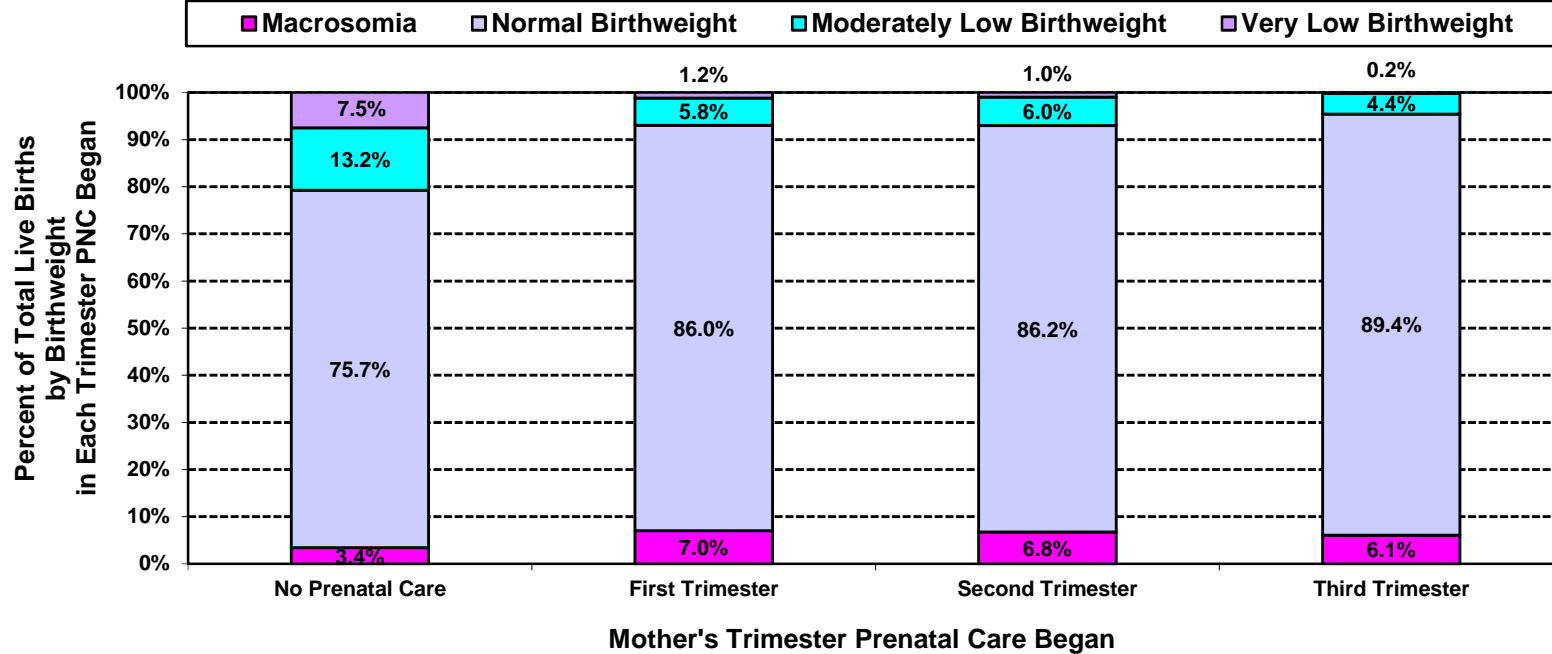
Year 2020 Objective: Increase the proportion of pregnant women who receive prenatal care in the first trimester of pregnancy to 77.9 percent of live births.

Note: The decrease in first-trimester entry in 2007 is due at least in part to a recategorization of this data in birth certificates.

This measure excludes the prenatal care experiences of all women whose pregnancies did not result in live births.

Source: California Department of Public Health, Center for Health Statistics, OHIR Vital Statistics Section, 2004-2013.

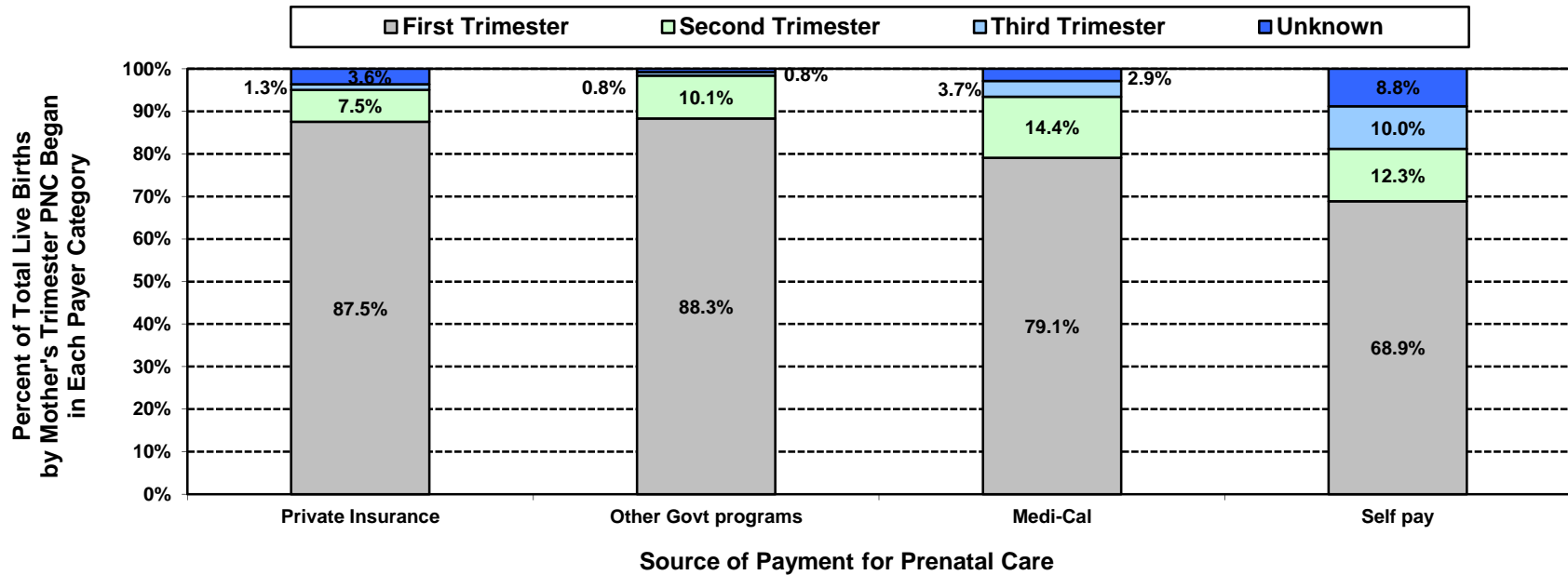
**Percent of Total Live Births
by Birthweight and by Mother's Trimester Prenatal Care (PNC) Began
Los Angeles County, 2013**



Los Angeles County, 2013									
Mother's Trimester Prenatal Care Began	Very Low Birthweight		Moderately Low Birthweight		Normal Birthweight		Macrosumia		Total Live Births
	0 to 1,499 grams		1,500 to 2,499 grams		2,500 to 3,999 grams		4,000+ grams		
	Number	Percent	Number	Percent	Number	Percent	Number	Percent	
No Prenatal Care	37	7.5	65	13.2	373	75.7	17	3.4	493
First	1,238	1.2	6,083	5.8	90,524	86.0	7,411	7.0	105,259
Second	143	1.0	872	6.0	12,443	86.2	980	6.8	14,438
Third	7	0.2	167	4.4	3,416	89.4	232	6.1	3,822
Unknown	103	2.3	343	7.6	3,796	84.1	272	6.0	4,514
Total	1,528	1.2	7,530	5.9	110,552	86.0	8,912	6.9	128,526

Note: "Trimester Prenatal Care Began" excludes the prenatal care experiences of all women whose pregnancies did not result in a live birth.
Source: California Department of Public Health, Center for Health Statistics, OHIR Vital Statistics Section, 2013

**Percent of Total Live Births by Mother's Trimester Prenatal Care (PNC) Began
and by Source of Payment for Prenatal Care (PNC)
Los Angeles County, 2013**



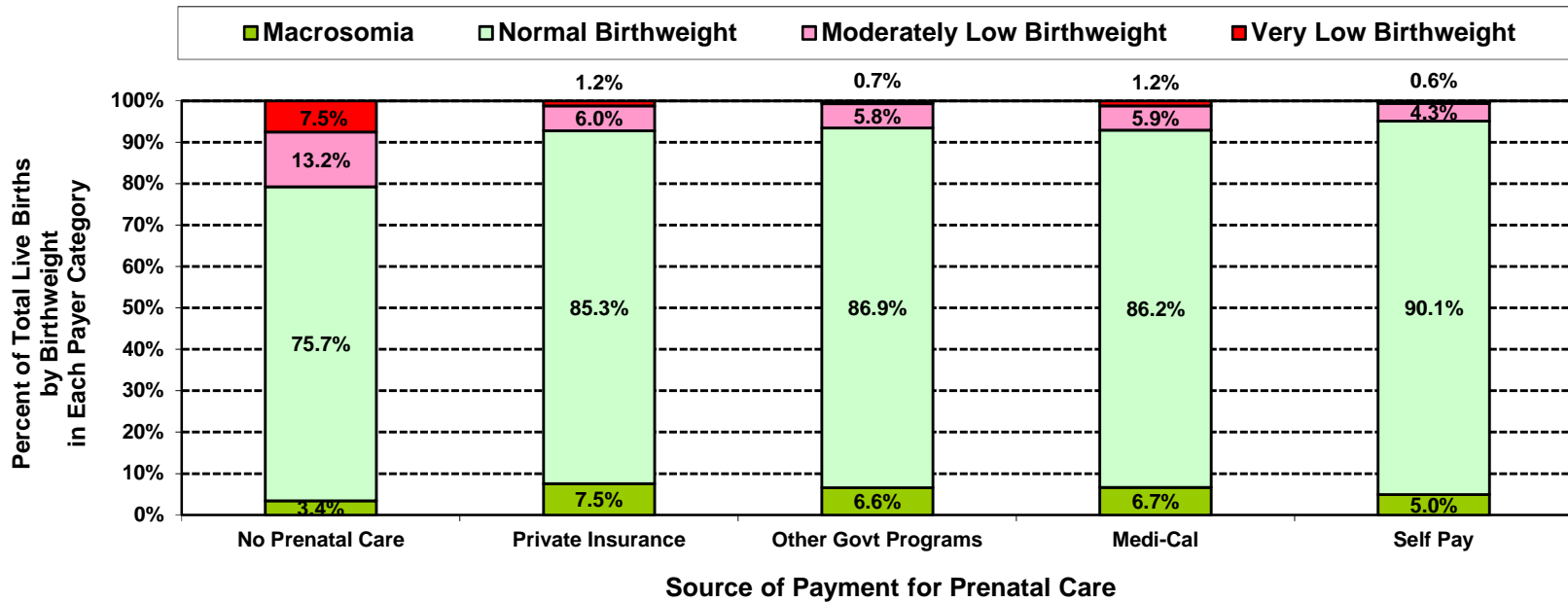
Los Angeles County, 2013											
Source of Payment for Prenatal Care	No Prenatal Care		Mother's Trimester Prenatal Care Began						Unknown		Total Live Births
	Number	Percent	First		Second		Third		Number	Percent	
			Number	Percent	Number	Percent	Number	Percent			
No Prenatal Care	493	100.0	<5	N/C	<5	N/C	<5	N/C	<5	N/C	493
Private Insurance	<5	N/C	46,155	87.5	3,977	7.5	694	1.3	1,911	3.6	52,737
Other Govt Programs	<5	N/C	2,363	88.3	269	10.1	22	0.8	21	0.8	2,675
Medi-Cal	<5	N/C	49,860	79.1	9,064	14.4	2,307	3.7	1,821	2.9	63,052
Self Pay	<5	N/C	5,169	68.9	922	12.3	753	10.0	661	8.8	7,505
Other/Unknown	<5	N/C	1,712	82.9	206	10.0	46	2.2	100	4.8	2,064
Total	493	0.4	105,259	81.9	14,438	11.2	3,822	3.0	4,514	3.5	128,526

Note: "Trimester Prenatal Care Began" excludes the prenatal care experiences of all women whose pregnancies did not result in a live birth.

Numbers fewer than 5 are shown as "<5". Rates are not calculated (N/C) if number is fewer than five.

Source: California Department of Public Health, Center for Health Statistics, OHIR Vital Statistics Section, 2013

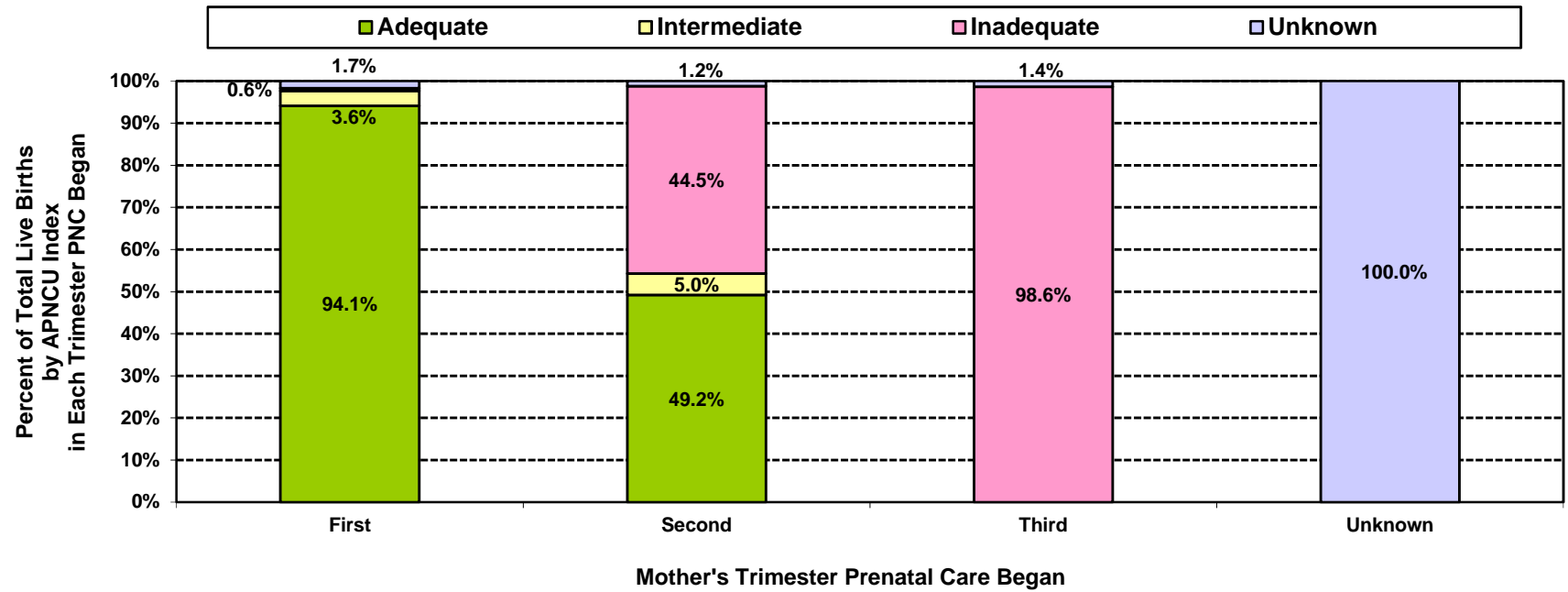
**Percent of Total Live Births
by Birthweight and by Source of Payment for Prenatal Care (PNC)
Los Angeles County, 2013**



Los Angeles County, 2013									
Source of Payment for Prenatal Care	Very Low Birthweight		Moderately Low Birthweight		Normal Birthweight		Macrosomia		Total Live Births
	0 to 1,499 grams		1,500 to 2,499 grams		2,500 to 3,999 grams		4,000+ grams		
	Number	Percent	Number	Percent	Number	Percent	Number	Percent	
No Prenatal Care	37	7.5	65	13.2	373	75.7	17	3.4	493
Private Insurance	627	1.2	3,161	6.0	44,972	85.3	3,977	7.5	52,737
Other Govt Programs	19	0.7	156	5.8	2,324	86.9	176	6.6	2,675
Medi-Cal	763	1.2	3,699	5.9	54,378	86.2	4,209	6.7	63,052
Self Pay	48	0.6	321	4.3	6,764	90.1	372	5.0	7,505
Other/Unknown	34	1.6	128	6.2	1,741	84.4	161	7.8	2,064
Total	1,528	1.2	7,530	5.9	110,552	86.0	8,912	6.9	128,526

Note: "Trimester Prenatal Care Began" excludes the prenatal care experiences of all women whose pregnancies did not result in a live birth.
Source: California Department of Public Health, Center for Health Statistics, OHIR Vital Statistics Section, 2013

**Percent of Total Live Births by Adequacy of Prenatal Care Utilization Index
and by Mother's Trimester Prenatal Care (PNC) Began
Los Angeles County, 2013**

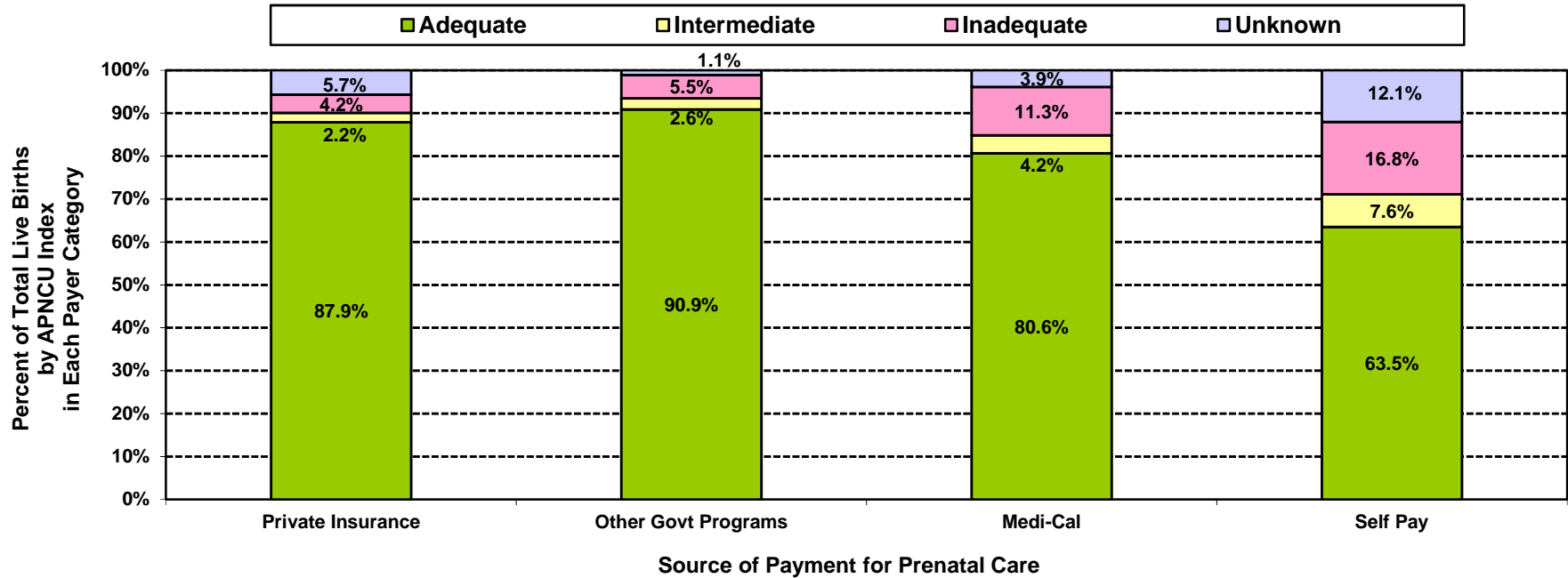


Los Angeles County, 2013									
Mother's Trimester Prenatal Care Began	Adequacy of Prenatal Care Utilization Index						Unknown		Total Live Births
	Adequate		Intermediate		Inadequate		Number	Percent	
	Number	Percent	Number	Percent	Number	Percent			
No Prenatal Care	<5	N/C	<5	N/C	493	100.0	<5	N/C	493
First	99,067	94.1	3,749	3.6	663	0.6	1,780	1.7	105,259
Second	7,105	49.2	729	5.0	6,432	44.5	172	1.2	14,438
Third	<5	N/C	<5	N/C	3,769	98.6	53	1.4	3,822
Unknown	<5	N/C	<5	N/C	<5	N/C	4,514	100.0	4,514
Total	106,172	82.6	4,478	3.5	11,357	8.8	6,519	5.1	128,526

Note: "Trimester Prenatal Care Began" excludes the prenatal care experiences of all women whose pregnancies did not result in a live birth. Numbers fewer than 5 are shown as "<5". Rates are not calculated (N/C) if number is fewer than five.

Source: California Department of Public Health, Center for Health Statistics, OHIR Vital Statistics Section, 2013

**Percent of Total Live Births by Adequacy of Prenatal Care Utilization Index
and by Source of Payment for Prenatal Care (PNC)
Los Angeles County, 2013**



Los Angeles County, 2013									
Source of Payment for Prenatal Care	Adequacy of Prenatal Care Utilization Index						Unknown		Total Live Births
	Adequate		Intermediate		Inadequate		Number	Percent	
	Number	Percent	Number	Percent	Number	Percent			
No Prenatal Care	<5	N/C	<5	N/C	493	100.0	<5	N/C	493
Private Insurance	46,357	87.9	1,148	2.2	2,217	4.2	3,015	5.7	52,737
Other Govt Programs	2,431	90.9	69	2.6	146	5.5	29	1.1	2,675
Medi-Cal	50,845	80.6	2,650	4.2	7,109	11.3	2,448	3.9	63,052
Self Pay	4,764	63.5	571	7.6	1,264	16.8	906	12.1	7,505
Other/Unknown	1,775	86.0	40	1.9	128	6.2	121	5.9	2,064
Total	106,172	82.6	4,478	3.5	11,357	8.8	6,519	5.1	128,526

Note: Numbers fewer than 5 are shown as "<5". Rates are not calculated (N/C) if number is fewer than five.
Source: California Department of Public Health, Center for Health Statistics, OHIR Vital Statistics Section, 2013

TITLE V INDICATOR TEMPLATE

INDICATOR: Percent of Total Live Births by Adequacy of Prenatal Care Utilization (APNCU) Index

DEFINITION: The percent of live born infants whose mothers received adequate prenatal care as defined by the Adequacy of Prenatal Care Utilization Index (APNCU) developed by Milton Kotelchuck. This index does not assess the quality of the prenatal care that is delivered.

NUMERATOR: The number of live births to women who received adequate care, as defined by the APNCU criteria, by place of residence, in a calendar year

DENOMINATOR: The total number of live births, by place of residence, in a calendar year

HEALTHY PEOPLE 2020 OBJECTIVE:
 Increase the proportion of pregnant women who receive early and adequate prenatal care to 77.6 percent of live births.
 (Baseline: 70.5 percent of pregnant women in 2007) (Objective MICH-10.2)

RISK FACTORS: **Inadequate Prenatal Care**
 Low income; young maternal age/teen pregnancy; low maternal education level; race/ethnicity (African American, Hispanic, American Indian/Alaskan Native); high parity; maternal substance abuse; lack of health insurance; lack of obstetric providers

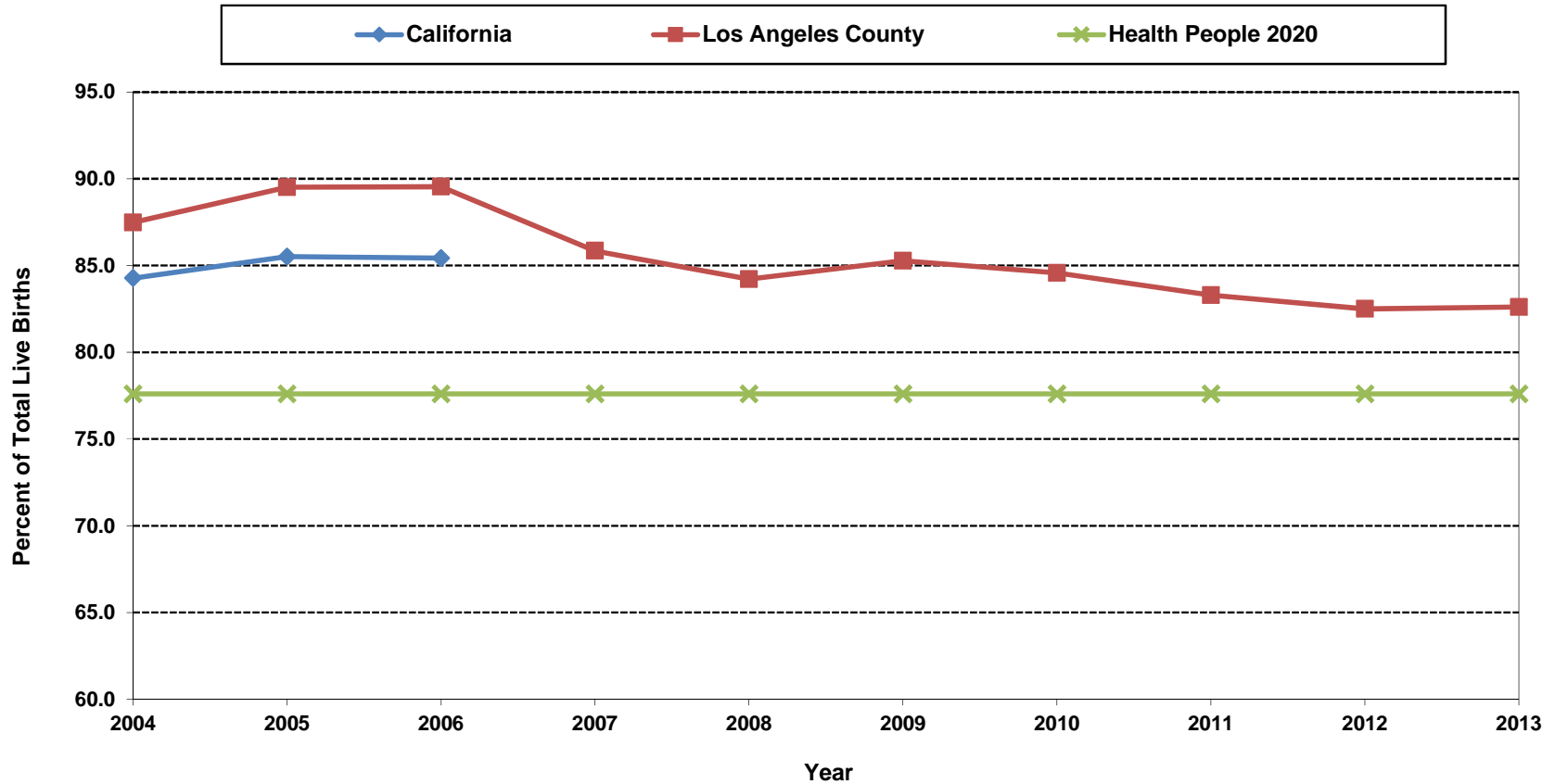
Year	California				Los Angeles County			
	Adequate Prenatal Care		95% Confidence Interval		Adequate Prenatal Care		95% Confidence Interval	
	Number	Percent	Lower	Upper	Number	Percent	Lower	Upper
2004	459,050	84.3	84.2	84.4	132,531	87.5	87.3	87.6
2005	469,208	85.5	85.4	85.6	134,611	89.5	89.4	89.7
2006	480,255	85.4	85.3	85.5	135,961	89.5	89.4	89.7
2007	N/A	N/A	N/A	N/A	130,333	85.9	85.7	86.0
2008	N/A	N/A	N/A	N/A	124,381	84.2	84.0	84.4
2009	N/A	N/A	N/A	N/A	119,111	85.3	85.1	85.5
2010	N/A	N/A	N/A	N/A	112,631	84.6	84.4	84.8
2011	N/A	N/A	N/A	N/A	108,553	83.3	83.1	83.5
2012	N/A	N/A	N/A	N/A	108,651	82.5	82.3	82.7
2013	N/A	N/A	N/A	N/A	106,172	82.6	82.4	82.8

Denominator: Live Births		
Year	California	LA County
2004	544,685	151,504
2005	548,700	150,377
2006	562,157	151,837
2007	567,527	151,813
2008	551,567	147,684
2009	526,774	139,679
2010	509,979	133,160
2011	502,023	130,313
2012	503,788	131,697
2013	494,392	128,523

Note: The APNCU Index measures prenatal care utilization, which includes consideration of the month prenatal care began and the number of prenatal care visits during the time mothers actually received prenatal care. This utilization index is based on the recommendations established by the American College of Obstetrics and Gynecologists (ACOG). Appendix A contains the specific criteria for timing and number of prenatal care visits that are used to assign adequacy categories. Due to the change in methodology for calculating the Kotelchuck Index, data presented may not be comparable to those published in previous FHOP reports. N/A: 2007 - 2013 data for California not available for retrieval

Source: California Department of Public Health, Center for Health Statistics, OHIR Vital Statistics Section, 2004-2013.

**Percent of Total Live Births with "Adequate" Prenatal Care
as Rated by Kotelchuck (APNCU) Index
California vs. Los Angeles County, 2004-2013**



Year 2020 Objective: Increase the proportion of pregnant women who receive early and adequate prenatal care to 77.6 percent of live births.

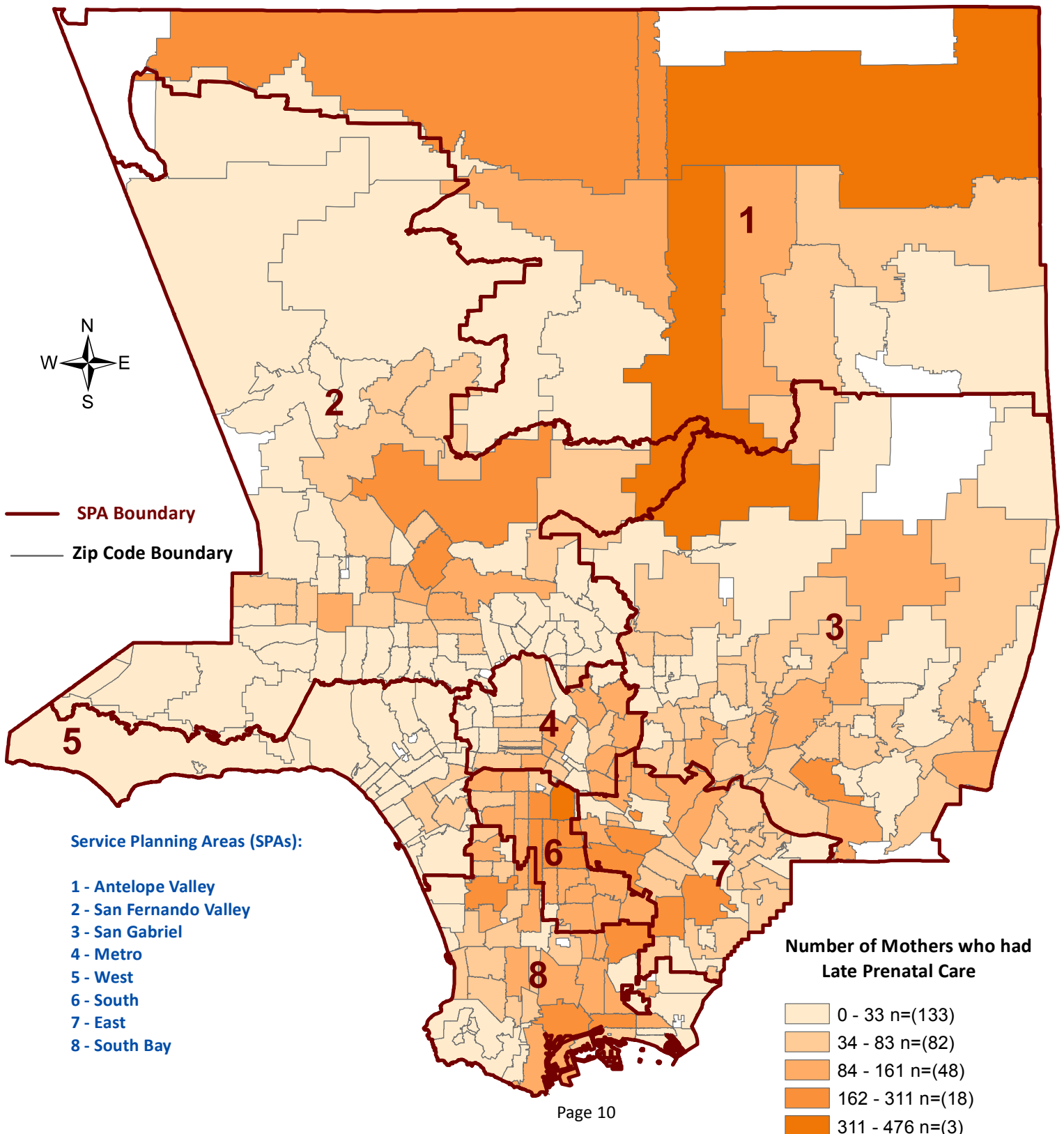
Note: The APNCU Index measures prenatal care utilization, which includes consideration of the month prenatal care began and the number of prenatal care visits during the time mothers actually received prenatal care. This utilization index is based on the recommendations established by the American College of Obstetrics and Gynecologists (ACOG). Appendix A contains the specific criteria for timing and number of prenatal care visits that are used to assign adequacy categories.

Due to the change in methodology for calculating the Kotelchuck Index, data presented may not be comparable to those published in previous FHOP reports.

Source: California Department of Public Health, Center for Health Statistics, OHIR Vital Statistics Section, 2004-2013.

Los Angeles County - Department of Public Health

Number of Live Births by Mothers who had Late Prenatal Care by Zip Code* and Service Planning Area (SPA)
Los Angeles County, 2013



*Los Angeles County zip code boundaries as of 2010

Total number of live births in Los Angeles County, 2012= 128,526

Total number of mothers who had late prenatal care in Los Angeles County, 2013 = 18,260

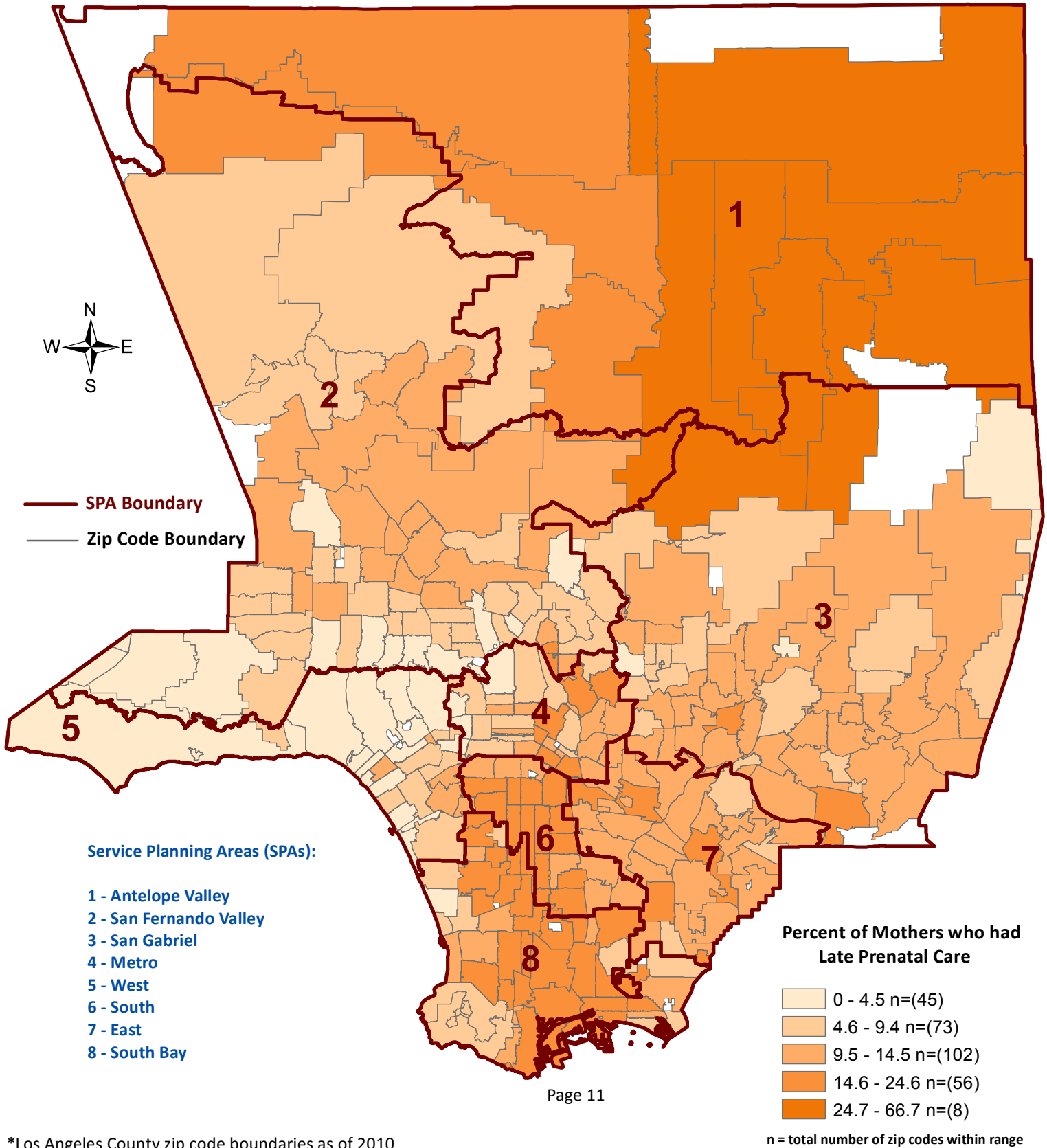
Note: Prenatal care that begins in the second or third trimester is considered late.

Zip code 90704 (Catalina Island) is not included. Total number of mothers who had late prenatal care in 90704, 2013 = 9

Source : California Department of Public Health, Center for Health Statistics, OHIR Vital Statistics Section, 2013.

n = total number of zip codes within range

Los Angeles County - Department of Public Health
Percent of Live Births by Mothers who had Late Prenatal Care by Zip Code* and Service Planning Area (SPA)
Los Angeles County, 2013



*Los Angeles County zip code boundaries as of 2010

Total number of live births in Los Angeles County, 2013 = 128,526

Total number of mothers who had late prenatal care in Los Angeles County, 2013 = 18,260

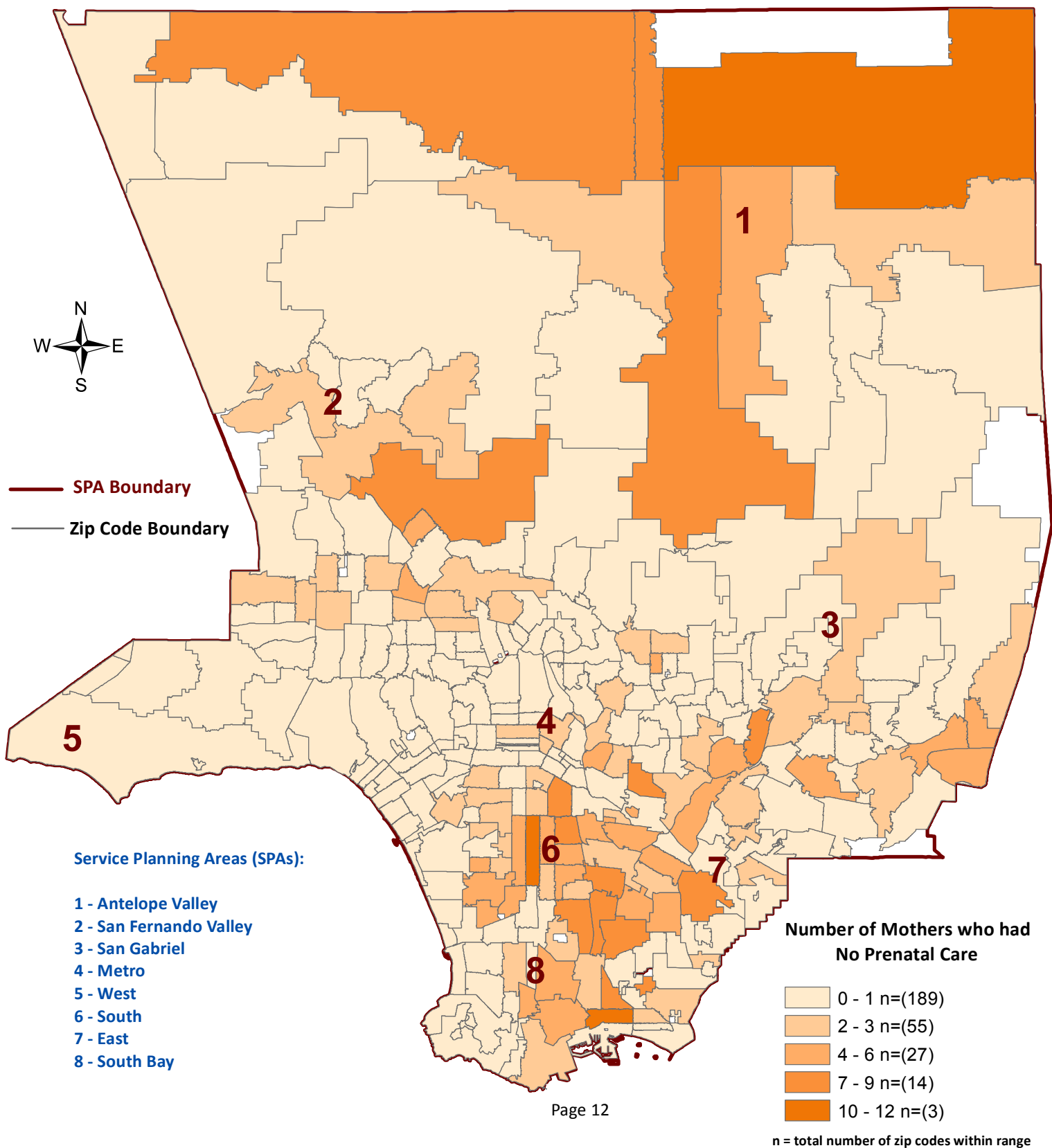
Percent of mothers who had late prenatal care in Los Angeles County, 2013 = 14.2

Note: Prenatal care that begins in the second or third trimester is considered late.

Zip code 90704 (Catalina Island) is not included. Percent of mothers who had late prenatal care in 90704, 2013 = 19.57

Source : California Department of Public Health, Center for Health Statistics, OHIR Vital Statistics Section, 2013.

Los Angeles County - Department of Public Health
Number of Live Births by Mothers who had No Prenatal Care by Zip Code* and Service Planning Area (SPA)
Los Angeles County, 2013



*Los Angeles County zip code boundaries as of 2010

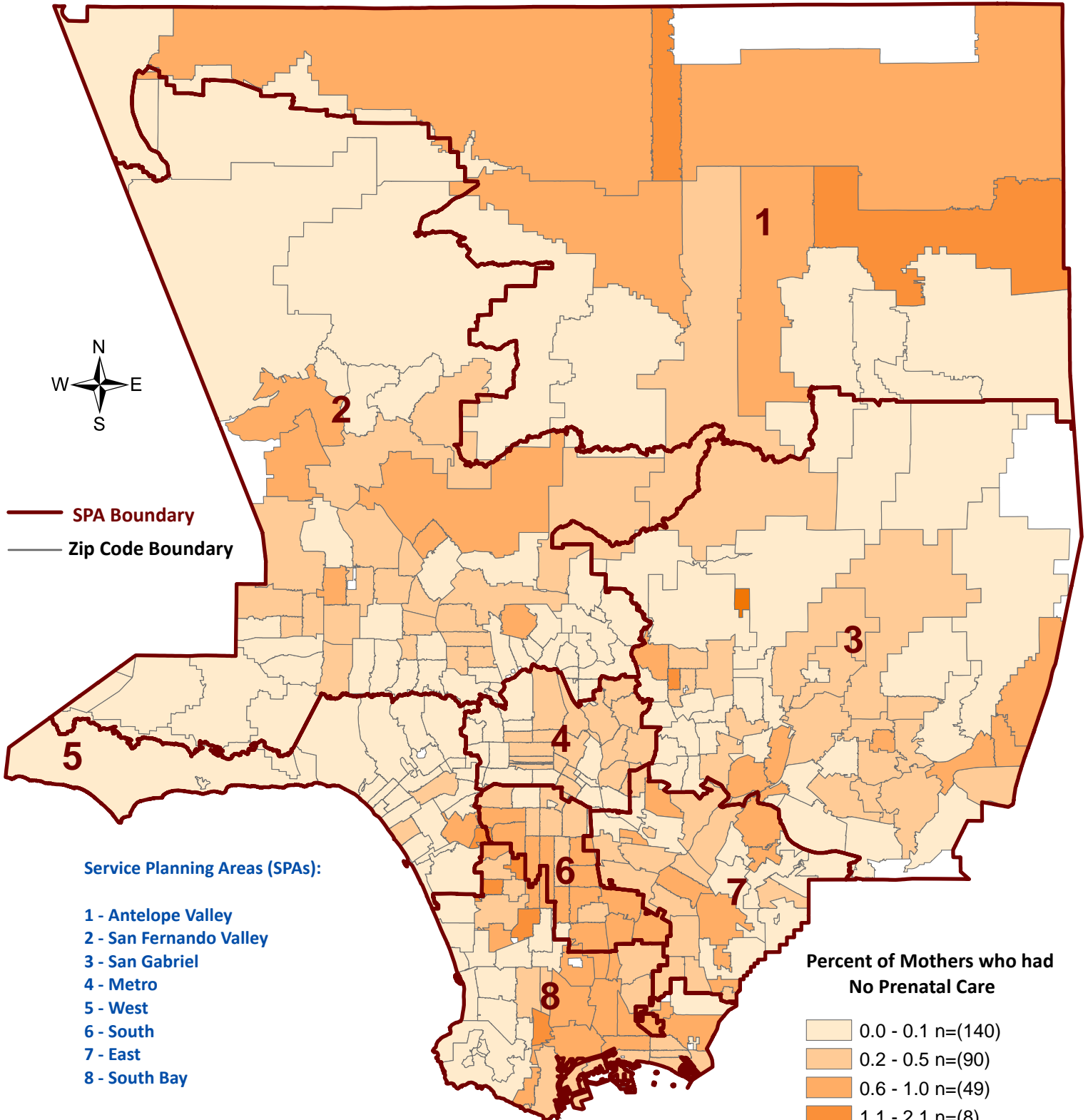
Total number of live births in Los Angeles County, 2013 = 128,526

Total number of mothers who had no prenatal care in Los Angeles County, 2013 = 493

Zip code 90704 (Catalina Island) is not included. Total number of mothers who had no prenatal care in 90704, 2013 = 0

Source: California Department of Public Health, Center for Health Statistics, OHIR Vital Statistics Section, 2013.

Los Angeles County - Department of Public Health
Percent of Live Births by Mothers who had No Prenatal Care by Zip Code* and Service Planning Area (SPA)
Los Angeles County, 2013



*Los Angeles County zip code boundaries as of 2010

Total number of live births in Los Angeles County, 2013 = 128,526

Total number of mothers who had no prenatal care in Los Angeles County, 2013 = 493

Percent of mothers who had no prenatal care in Los Angeles County, 2013 = 0.40

Zip code 90704 (Catalina Island) is not included. Percent of mothers who had no prenatal care in 90704, 2013 = 0.00

Source : California Department of Public Health, Center for Health Statistics, OHIR Vital Statistics Section, 2013.

n = total number of zip codes within range