

Canine Parvovirus in Dogs - Epidemiology Update

2015

4th quarter

Volume 1, Issue 4

Canine Parvovirus (Parvo) in Dogs in Los Angeles County

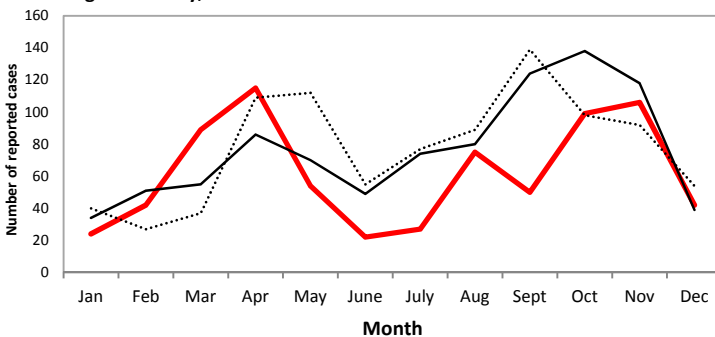
In the fourth quarter of 2015, 247 new cases of canine parvovirus (parvo) were reported in Los Angeles County, for total of 745 in 2015. This is 19% decrease compared to the 918 cases reported in 2014. The majority (85%) of the 745 cases were confirmed by testing. The remainder of the cases and were suspected based on clinical signs, unvaccinated status, and/or exposure to a confirmed case. The median age was 4 months, and the average age was 7 months. Cases continue to exhibit a bi-modal seasonal trend, with peaks occurring in both the springtime and fall. This analysis includes data from Pasadena and Long Beach (independent health jurisdictions).

Animal shelters reported 77% of the cases, and private veterinary practices reported 17%. For 7% of the cases, the reporting facility was not known. Of the cases diagnosed in shelters, the vast majority (93%) were ill at the time of intake or within the first 4 days, indicating they had been infected in the community before intake, not in the shelter.

The Antelope Valley cities of Lancaster and Palmdale combined had the most cases in 2015, with 169 cases (23% of the total). Historically, cases have clustered in the Antelope Valley, Lynwood, Compton, Pomona and in the communities of Pacoima, Watts, and Wilmington in Los Angeles.

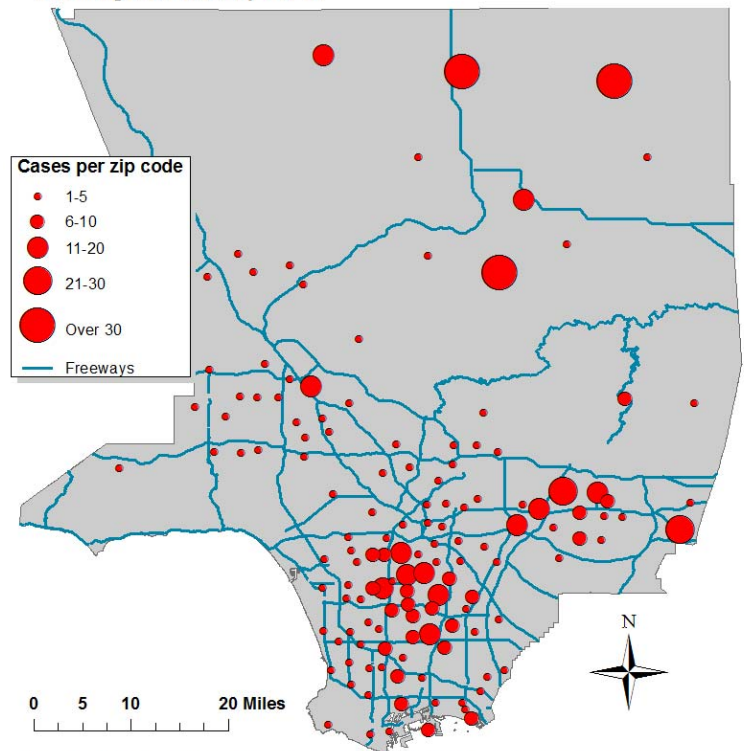
Seasonality of Parvo in Dogs

Los Angeles County, 2013-2015



Parvo in Dogs

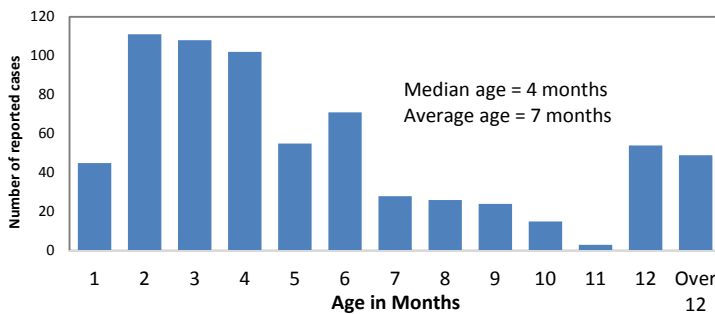
Los Angeles County 2015



Map depicts 704 of the 707 cases of community-acquired canine parvovirus reported in dogs in Los Angeles County in 2015. The circles are centered on the home zip codes of the dogs, or the zip code where found in the case of strays. Excludes 38 cases infected in a shelter. Includes information from Long Beach and Pasadena.

Ages of Dogs with Parvo

Los Angeles County, 2015



Why does Public Health track Canine Parvovirus in dogs?

Canine parvovirus does not make people sick. However, parvo cases in dogs serve as markers for areas where access to veterinary services is lower. Vaccination against parvo in dogs is a core part of basic veterinary care. Veterinary professionals play a significant role in protecting the public's health by preventing, detecting and treating zoonotic diseases in animals (reducing risk of spread to people), educating the public on animal bite prevention, and encouraging a healthy lifestyle (such as preventing dog and human obesity through encouragement of dog walking). Read more - publichealth.lacounty.gov/vet/parvo.htm

Report parvo cases

Veterinary practices - publichealth.lacounty.gov/vet/docs/Forms/ParvoTrackingSheet_vet.pdf

Animal Shelters - publichealth.lacounty.gov/vet/docs/Forms/ParvoTrackingSheet_shelter.pdf

Veterinary Public Health Program (213) 989-7060

